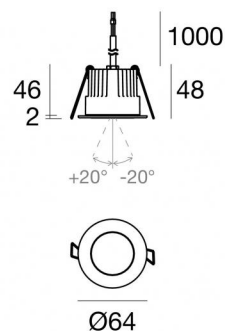




Downlights | 1 x powerLED 5 W DC 24 V | CRI 80
81242M15



Technical data	
Type	Encasement with flange
Installation position	Ceiling
Installation environment	Outdoor
Light Source	LED
Circuit structure	powerLED
Optics	Spot
Light emission direction	downward
Nominal power	5 W DC
Source lumens	490 lm
Input voltage range	24 V
CCT / Tone	2700 K
Colour rendering index	80 Ra
C.C. / C.V.	CV
Safety class	3
IP	IP67
IK	IK10
Glow wire test	850°
Direct mounting on normally flammable surfaces	Yes
CE	Yes
Driver included	No
C.V. - C.C. Converter	Converter 24V included
Dimmable article	DALI - 1-10V
Directional	No
Tilting	Yes
total angle (vertical plane)	40 °
Walk-over	No
Drive-over	No
Cable included	Yes
Cable length	1 m
Resin potting	Yes
Type of light emission	Single emission
Net weight	0.2 Kg
Electrostatic discharge protection	No
Surge protection	No
Product technological characteristics	Acquastop - TVS

Finishing casing

Material	Die-cast Aluminium EN AB - 46100
Colour	black
Processing	Open pore anodizing + Powder Coating

Finishing diffuser

Material	Extra clear glass - Tempered
Colour	transparent

Finishing flange

Material	AISI 316L steel
Colour	steel
Processing	Brushing

Electronics



89488
On/Off Driver 190~250V AC / 180~275V DC 15 W (1 - 3 art.)



89179
On/Off Driver 198~264V AC 24 W (1 - 4 art.)



89359
On/Off Driver 198~264V AC / 180~275V DC 48 W (1 - 9 art.)



99331
On/Off Driver 198~264V AC / 176~275V DC 150 W (1 - 30 art.)



99660
DALI - 1-10V Controller 24V DC 216 W (- art.)



C-E500023
DALI - 1-10V - Push and Simply Dim Controller 8~53V DC 576 W (- art.)



Downlights | 1 x powerLED 5 W DC 24 V | CRI 80 | Base 81242M15

Single emission recessed downlights for outdoor application. The super warm white LED light source with a spot light distribution is composed of 1 powerLED LEDs with CCT of 2700 K and a CRI 80; the source luminous flux is 490 lm, with a 98.0 lm/W nominal luminous efficacy.

The device body is made of die-cast aluminium en ab - 46100 and features a black finish, processed by means of open pore anodizing + powder coating; the diffuser is made of extra clear glass - tempered. The ingress protection degree is IP67; the total weight is of 0.2 kg.

The total absorbed power is 5 W. The power supply cable is included and features a 1 m length.

The device features protection class III and can be ceiling-mounted, with a 55 mm diameter hole (in plasterboard) with an outer casing, code 99749(for concrete or masonry).

Compliant with the EN 60598-1 standard and its specific provisions.



Distance [m]	Cone diameter [m]	illuminance [lx]
0.5	0.19 0.20	E(0°) 5143 E(C90) 2452 E(C0) 2434
1.0	0.39 0.39	E(0°) 1286 E(C90) 613 E(C0) 608
1.5	0.58 0.59	E(0°) 571 E(C90) 272 E(C0) 270
2.0	0.78 0.78	E(0°) 321 E(C90) 153 E(C0) 152
2.5	0.97 0.98	E(0°) 206 E(C90) 98 E(C0) 97
3.0	1.17 1.18	E(0°) 143 E(C90) 68 E(C0) 68

— C0/C180 (Half-peak divergence: 22.2°)
— C90/C270 (Half-peak divergence: 22.0°)

Energy efficiency class

This product contains a light source of energy efficiency class E.

Illuminotechnical Features

Light Output Ratio (LOR)	62 %
Source lumens	490 lm
Delivered lumens	307 lm
Consumption	5 W
Luminaire efficacy	61 lm/W
Colour temperature	2700 K
Standard Deviation of Colour Matching	3 Step MacAdam
Colour rendering index	80 Ra
Black Body Locus	On
Standard Operating Ambient Temperature	-20 / +50°C
Ordinary temperature on the glass	40°C

LED Life / Failure Ratio

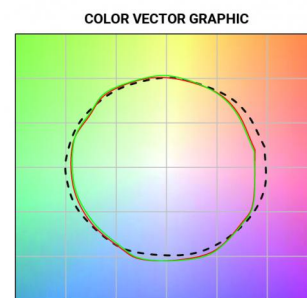
L70 B10 C0 247450h (at Tj 60 Ta 25)

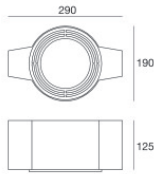
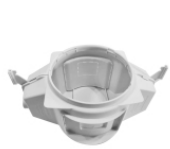
UGR

UGR axial	15.6
UGR transversal	15.6
X=4H Y=8H	S=0.25H
Reflection factor	70/50/20

OPTICAL

C0/C180 optics	22°
Light distribution simmetry	Symmetrical





Outer casing - (to be completed with universal grill 99750)
installation position: ceiling; type of installation: masonry L=290mm, H=125mm, D=190mm

Code
99749



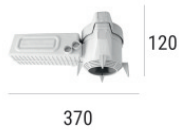
Accessories for outer casings - Universal grille for outer casing 99749

Code
99750



Outer casing
installation position: ceiling; type of installation: masonry L=200mm, H=113mm, D=137mm.
Material:polypropylene, colour:white.

Code
89373



Outer casing
installation position: ceiling; type of installation: masonry L=370mm, H=120mm, D=200mm.
Material:polypropylene, colour:white.

Code
89374