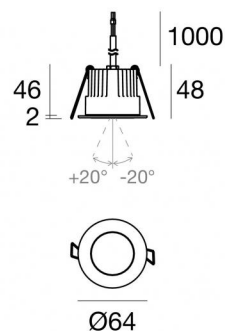




Downlights | 1 + 1 x powerLED 8 W DC 350 mA

CRI 80

81241W60



55

**Technical data**

Type	Encasement with flange
Installation position	Ceiling
Installation environment	Outdoor
Light Source	LED
Circuit structure	powerLED
Optics	60° + 60°
Light emission direction	downward + downward
Nominal power	8 W DC
Source lumens	980 lm
CCT / Tone	3000 K
Colour rendering index	80 Ra
C.C. / C.V.	CC
Safety class	3
IP	IP67
IK	IK10
Glow wire test	850°
Direct mounting on normally flammable surfaces	Yes
CE	Yes
Driver included	No
Dimmable article	DALI - 1-10V
Directional	No
Tilting	Yes
total angle (vertical plane)	40 °
Walk-over	No
Drive-over	No
Cable included	Yes
Cable length	1 m
Resin potting	Yes
Type of light emission	Single emission
Net weight	0.2 Kg
Electrostatic discharge protection	No
Surge protection	No
Product technological characteristics	Acquastop - TVS

**Finishing casing**

Material	Die-cast Aluminium EN AB - 46100
Colour	black
Processing	Open pore anodizing + Powder Coating

**Finishing diffuser**

Material	Extra clear glass - Tempered
Colour	transparent

**Finishing flange**

Material	AISI 316L steel
Colour	steel
Processing	Brushing

**Electronics**

89421  
On/Off Driver 198~264V AC / 176~275V DC (1 art.)



C-E200006  
On/Off Driver 198~264V AC / 180~275V DC (1 art.)

**Cables Electrification**

Cable connector	No
-----------------	----



## Downlights | 1 + 1 x powerLED 8 W DC 350 mA | CRI 80 | Base 81241W60

Single emission recessed downlights for outdoor application. The warm white LED light source is composed of 1 powered LEDs with CCT of 3000 K and a CRI 80; the source luminous flux is 490 lm, with a 122.5 lm/W nominal luminous efficacy. The warm white LED light source is composed of 1 powered LEDs with CCT of 3000 K and a CRI 80; the source luminous flux is 490 lm, with a 122.5 lm/W nominal luminous efficacy.

The device body is made of die-cast aluminium en ab - 46100 and features a black finish, processed by means of open pore anodizing + powder coating; the diffuser is made of extra clear glass - tempered. The ingress protection degree is IP67; the total weight is of 0.2 kg. The power supply driver is not provided and is to be ordered separately.

The total absorbed power is 8 W. The power supply cable is included and features a 1 m length.

The device features protection class III and can be ceiling-mounted, with a 55 mm diameter hole (in plasterboard) with an outer casing, code 99749(for concrete or masonry).

Compliant with the EN 60598-1 standard and its specific provisions.



Distance [m]	Cone diameter [m]	illuminance [lx]
0.5	0.45 0.46	E(0°) 1599 E(C90) 608 E(C0) 602
1.0	0.90 0.92	E(0°) 400 E(C90) 152 E(C0) 150
1.5	1.35 1.37	E(0°) 178 E(C90) 68 E(C0) 67
2.0	1.80 1.83	E(0°) 100 E(C90) 38 E(C0) 38
2.5	2.25 2.29	E(0°) 64 E(C90) 24 E(C0) 24
3.0	2.70 2.75	E(0°) 44 E(C90) 17 E(C0) 17

— C0/C180 (Half-peak divergence: 49.2°)  
— C90/C270 (Half-peak divergence: 48.4°)

### Energy efficiency class

This product contains 2 light sources of energy efficiency class E.

### Illuminotechnical Features

Light Output Ratio (LOR)	30 %
Source lumens	980 lm
Delivered lumens	299 lm
Consumption	4 W
Luminaire efficacy	74 lm/W
Colour temperature	3000 K
Standard Deviation of Colour Matching	3 Step MacAdam
Colour rendering index	80 Ra
Standard Operating Ambient Temperature	-20 / +50°C
Ordinary temperature on the glass	40°C

### LED Life / Failure Ratio

L70 B10 C0 247450h (at Tj 60 Ta 25 )

### UGR

UGR axial	19.7
UGR transversal	19.7
X=4H   Y=8H	S=0.25H
Reflection factor	70/50/20

### OPTICAL

C0/C180 optics	48°
Light distribution simmetry	Symmetrical



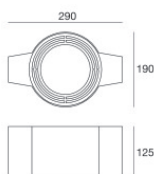
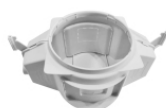
Outer casing  
 installation position: ceiling; type of installation: masonry L=200mm, H=113mm, D=137mm.  
 Material: polypropylene, colour: white.

**Code**  
89373



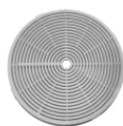
Outer casing  
 installation position: ceiling; type of installation: masonry L=370mm, H=120mm, D=200mm.  
 Material: polypropylene, colour: white.

**Code**  
89374



Outer casing - (to be completed with universal grill 99750)  
 installation position: ceiling; type of installation: masonry L=290mm, H=125mm, D=190mm

**Code**  
99749



Accessories for outer casings - Universal grille for outer casing 99749

**Code**  
99750