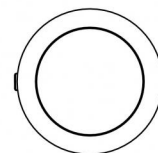
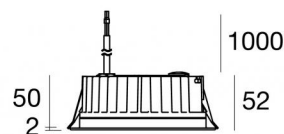




Downlights | 1
+ 1 arrayLED 26 W DC 24 V | CRI 80

81238M15



Ø138

| Technical data | |
|--|------------------------|
| Type | Encasement with flange |
| Installation position | Ceiling |
| Installation environment | Outdoor |
| Light Source | LED |
| Circuit structure | arrayLED |
| Optics | Spot + Spot |
| Light emission direction | downward + downward |
| Nominal power | 26 W DC |
| Source lumens | 3752 lm |
| Input voltage range | 24 V |
| CCT / Tone | 2700 K |
| Colour rendering index | 80 Ra |
| C.C. / C.V. | CV |
| Safety class | 3 |
| IP | IP67 |
| IK | IK10 |
| Glow wire test | 850° |
| Direct mounting on normally flammable surfaces | Yes |
| CE | Yes |
| Driver included | No |
| C.V. - C.C. Converter | Converter 24V included |
| Dimmable article | DALI - 1-10V |
| Directional | No |
| Tilting | No |
| Walk-over | No |
| Drive-over | No |
| Cable included | Yes |
| Cable length | 1 m |
| Resin potting | Yes |
| Type of light emission | Single emission |
| Net weight | 0.9 Kg |
| Electrostatic discharge protection | No |
| Surge protection | No |
| Product technological characteristics | Acquastop |

Finishing casing

| | |
|------------|--------------------------------------|
| Material | Die-cast Aluminium EN AB - 46100 |
| Colour | black |
| Processing | Open pore anodizing + Powder Coating |

Finishing diffuser

| | |
|------------|------------------------------|
| Material | Extra clear glass - Tempered |
| Colour | transparent |
| Processing | Silk-screening |

Finishing flange

| | |
|------------|-----------------|
| Material | AISI 316L steel |
| Colour | steel |
| Processing | Brushing |

Electronics



89488
On/Off Driver 190~250V AC / 180~275V DC 15 W (1 art.)



89179
On/Off Driver 198~264V AC 24 W (1 art.)



89359
On/Off Driver 198~264V AC / 180~275V DC 48 W (1 art.)



99331
On/Off Driver 198~264V AC / 176~275V DC 150 W (1 - 5 art.)



99660
DALI - 1-10V Controller 24V DC 216 W (- art.)



C-E500023
DALI - 1-10V - Push and Simply Dim Controller 8~53V DC 576 W (- art.)

Cables Electrification

| | |
|-----------------|----|
| Cable connector | No |
|-----------------|----|



Downlights | 1 + 1 arrayLED 26 W DC 24 V | CRI 80 | Base 81238M15

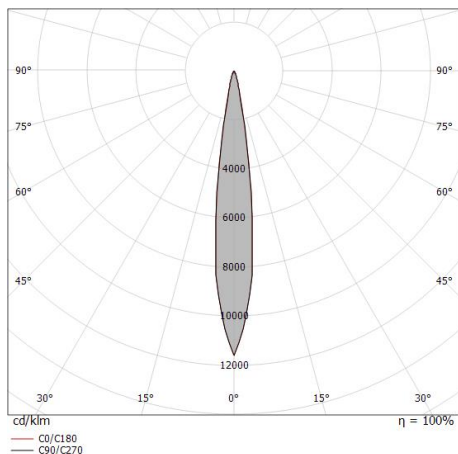
Single emission recessed downlights for outdoor application. The super warm white LED light source with a spot light distribution is composed of 1 arrayLEDs with CCT of 2700 K and a CRI 80; the source luminous flux is 1876 lm, with a 144.3 lm/W nominal luminous efficacy. The super warm white LED light source with a spot light distribution is composed of 1 arrayLEDs with CCT of 2700 K and a CRI 80; the source luminous flux is 1876 lm, with a 144.3 lm/W nominal luminous efficacy.

The device body is made of die-cast aluminium en ab - 46100 and features a black finish, processed by means of open pore anodizing + powder coating; the diffuser is made of extra clear glass - tempered with a silk-screening treatment. The ingress protection degree is IP67; the total weight is of 0.9 kg.

The total absorbed power is 26 W. The power supply cable is included and features a 1 m length.

The device features protection class III and can be ceiling-mounted, with a 127 mm diameter hole (in plasterboard) with an outer casing, code 99749(for concrete or masonry).

Compliant with the EN 60598-1 standard and its specific provisions.



| Distance [m] | Cone diameter [m] | illuminance [lx] |
|--------------|-------------------|--|
| 0.5 | 0.13 0.12 | E(0°) 67493 E(C90) 7.2° 33409 E(C0) 7.1° 33523 |
| 1.0 | 0.25 0.25 | E(0°) 16873 E(C90) 7.2° 8352 E(C0) 7.1° 8381 |
| 1.5 | 0.38 0.37 | E(0°) 7499 E(C90) 7.2° 3712 E(C0) 7.1° 3725 |
| 2.0 | 0.51 0.50 | E(0°) 4218 E(C90) 7.2° 2088 E(C0) 7.1° 2095 |
| 2.5 | 0.63 0.62 | E(0°) 2700 E(C90) 7.2° 1336 E(C0) 7.1° 1341 |
| 3.0 | 0.76 0.75 | E(0°) 1875 E(C90) 7.2° 928 E(C0) 7.1° 931 |

Distance [m] Cone diameter [m] illuminance [lx]

— C0/C180 (Half-peak divergence: 14.2°)
— C90/C270 (Half-peak divergence: 14.4°)

Energy efficiency class

This product contains 2 light sources of energy efficiency class E.

Illuminotechnical Features

| | |
|--|----------------|
| Light Output Ratio (LOR) | 38 % |
| Source lumens | 3752 lm |
| Delivered lumens | 1455 lm |
| Consumption | 13 W |
| Luminaire efficacy | 111 lm/W |
| Colour temperature | 2700 K |
| Standard Deviation of Colour Matching | 2 Step MacAdam |
| Colour rendering index | 80 Ra |
| Standard Operating Ambient Temperature | -20 / +50°C |
| Ordinary temperature on the glass | 40°C |

LED Life / Failure Ratio

L70 B10 C0 296960h (at Tj 65 Ta 25)

UGR

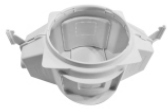
| | |
|-------------------|----------|
| UGR axial | 12.9 |
| UGR transversal | 13 |
| X=4H Y=8H | S=0.25H |
| Reflection factor | 70/50/20 |

OPTICAL

| | |
|-----------------------------|-------------|
| C0/C180 optics | 14° |
| Light distribution simmetry | Symmetrical |



Orma_C | Downlights | Accessories
81238M15



Outer casing - (to be completed with universal grill 99750)
installation position: ceiling; type of installation: masonry L=290mm, H=125mm, D=190mm

Code
99749



Accessories for outer casings - Universal grille for outer casing 99749

Code
99750