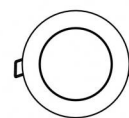




Downlights | 1 arrayLED 8 W DC 220 mA | CRI 80  
81229W15



86



Ø97

#### Technical data

Type	Encasement with flange
Installation position	Ceiling
Installation environment	Outdoor
Light Source	LED
Circuit structure	arrayLED
Optics	Spot
Light emission direction	downward
Nominal power	8 W DC
Source lumens	1182 lm
Input voltage range	220mA
CCT / Tone	3000 K
Colour rendering index	80 Ra
C.C. / C.V.	CC
Safety class	3
IP	IP67
IK	IK10
Glow wire test	850°
Direct mounting on normally flammable surfaces	Yes
CE	Yes
Driver included	No
Dimmable article	DALI - 1-10V
Directional	No
Tilting	No
Walk-over	No
Drive-over	No
Cable included	Yes
Cable length	1 m
Resin potting	Yes
Type of light emission	Single emission
Net weight	0.5 Kg
Electrostatic discharge protection	No
Surge protection	No
Product technological characteristics	Acquastop

#### Finishing casing

Material	Die-cast Aluminium EN AB - 46100
Colour	black
Processing	Open pore anodizing + Powder Coating

#### Finishing diffuser

Material	Extra clear glass - Tempered
Colour	transparent
Processing	Silk-screening

#### Finishing flange

Material	AISI 316L steel
Colour	steel
Processing	Brushing

#### Electronics



99342  
On/Off Driver 198-264V AC



## Downlights | 1 arrayLED 8 W DC 220 mA | CRI 80 | Base 81229W15

Single emission recessed downlights for outdoor application. The warm white LED light source with a spot light distribution is composed of 1 arrayed LEDs with CCT of 3000 K and a CRI 80; the source luminous flux is 1182 lm, with a 147.8 lm/W nominal luminous efficacy.

The device body is made of die-cast aluminium en ab - 46100 and features a black finish, processed by means of open pore anodizing + powder coating; the diffuser is made of extra clear glass - tempered with a silk-screening treatment. The ingress protection degree is IP67; the total weight is of 0.5 kg. The power supply driver is not provided and is to be ordered separately.

The total absorbed power is 8 W. The power supply cable is included and features a 1 m length.

The device features protection class III and can be ceiling-mounted, with a 86 mm diameter hole (in plasterboard) with an outer casing, code 99749(for concrete or masonry).

Compliant with the EN 60598-1 standard and its specific provisions.

### Energy efficiency class

This product contains a light source of energy efficiency class E.

### Illuminotechnical Features

Light Output Ratio (LOR)	76 %
Source lumens	1182 lm
Delivered lumens	899 lm
Consumption	8 W
Luminaire efficacy	112 lm/W
Colour temperature	3000 K
Standard Deviation of Colour Matching	2 Step MacAdam
Colour rendering index	80 Ra
Standard Operating Ambient Temperature	-20 / +50°C
Ordinary temperature on the glass	40°C

### LED Life / Failure Ratio

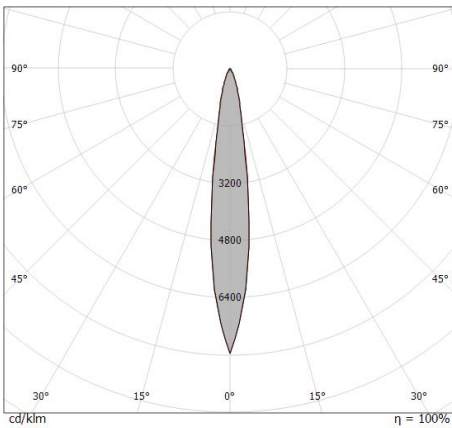
L70 B10 C0 252000h (at Tj 65 Ta 25 )

### UGR

UGR axial	12.8
UGR transversal	13
X=4H   Y=8H	S=0.25H
Reflection factor	70/50/20

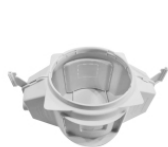
### OPTICAL

C0/C180 optics	15°
Light distribution simmetry	Symmetrical



Distance [m]	Cone diameter [m]	illuminance [lx]
0.5	0.13 0.11	E(0°) 27163 E(C90) 7.4° 13404 E(C0) 7.5° 13239
1.0	0.26 0.26	E(0°) 6791 E(C90) 7.4° 3351 E(C0) 7.5° 3310
1.5	0.39 0.39	E(0°) 3018 E(C90) 7.4° 1489 E(C0) 7.5° 1471
2.0	0.52 0.53	E(0°) 1698 E(C90) 7.4° 838 E(C0) 7.5° 827
2.5	0.65 0.66	E(0°) 1087 E(C90) 7.4° 536 E(C0) 7.5° 530
3.0	0.78 0.79	E(0°) 755 E(C90) 7.4° 372 E(C0) 7.5° 368

— C0/C180 (Half-peak divergence: 15.0°)  
— C90/C270 (Half-peak divergence: 14.8°)



Outer casing - (to be completed with universal grill 99750)  
installation position: ceiling; type of installation: masonry L=290mm, H=125mm, D=190mm

**Code**  
99749



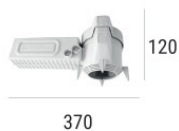
Accessories for outer casings - Universal grille for outer casing 99749

**Code**  
99750



Outer casing  
installation position: ceiling; type of installation: masonry L=200mm, H=113mm, D=137mm.  
Material:polypropylene, colour:white.

**Code**  
89373



Outer casing  
installation position: ceiling; type of installation: masonry L=370mm, H=120mm, D=200mm.  
Material:polypropylene, colour:white.

**Code**  
89374