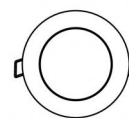




Downlights | 1 arrayLED 8 W DC 220 mA | CRI 80  
81229N30



86



Ø97

#### Technical data

Type	Encasement with flange
Installation position	Ceiling
Installation environment	Outdoor
Light Source	LED
Circuit structure	arrayLED
Optics	Medium Flood
Light emission direction	downward
Nominal power	8 W DC
Source lumens	1212 lm
Input voltage range	220mA
CCT / Tone	4000 K
Colour rendering index	80 Ra
C.C. / C.V.	CC
Safety class	3
IP	IP67
IK	IK10
Glow wire test	850°
Direct mounting on normally flammable surfaces	Yes
CE	Yes
Driver included	No
Dimmable article	DALI - 1-10V
Directional	No
Tilting	No
Walk-over	No
Drive-over	No
Cable included	Yes
Cable length	1 m
Resin potting	Yes
Type of light emission	Single emission
Net weight	0.5 Kg
Electrostatic discharge protection	No
Surge protection	No
Product technological characteristics	Acquastop

#### Finishing casing

Material	Die-cast Aluminium EN AB - 46100
Colour	black
Processing	Open pore anodizing + Powder Coating

#### Finishing diffuser

Material	Extra clear glass - Tempered
Colour	transparent
Processing	Silk-screening

#### Finishing flange

Material	AISI 316L steel
Colour	steel
Processing	Brushing

#### Electronics



99342  
On/Off Driver 198-264V AC (1 art.)

#### Cables Electrification

Cable connector	No
-----------------	----



Downlights | 1 arrayLED 8 W DC 220 mA | CRI 80 | Base 81229N30

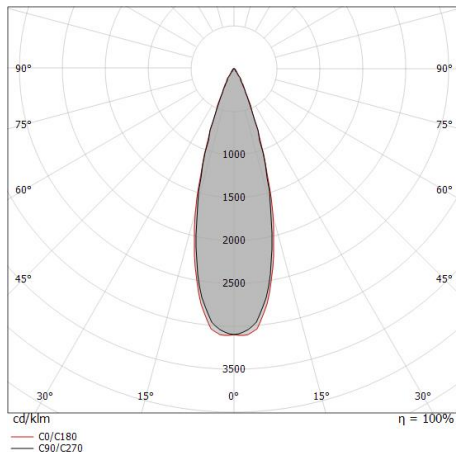
Single emission recessed downlights for outdoor application. The natural white LED light source with a medium flood light distribution is composed of 1 arrayed LEDs with CCT of 4000 K and a CRI 80; the source luminous flux is 1212 lm, with a 151.5 lm/W nominal luminous efficacy.

The device body is made of die-cast aluminium en ab - 46100 and features a black finish, processed by means of open pore anodizing + powder coating; the diffuser is made of extra clear glass - tempered with a silk-screening treatment. The ingress protection degree is IP67; the total weight is of 0.5 kg. The power supply driver is not provided and is to be ordered separately.

The total absorbed power is 8 W. The power supply cable is included and features a 1 m length.

The device features protection class III and can be ceiling-mounted, with a 86 mm diameter hole (in plasterboard) with an outer casing, code 99749(for concrete or masonry).

Compliant with the EN 60598-1 standard and its specific provisions.



Distance [m]	Cone diameter [m]	illuminance [lx]
0.5	0.28 0.29	E(0°) 11697 E(C90) 15.5° 5284 E(C0) 16.0° 5247
1.0	0.55 0.57	E(0°) 2924 E(C90) 15.5° 1321 E(C0) 16.0° 1312
1.5	0.83 0.86	E(0°) 1300 E(C90) 15.5° 587 E(C0) 16.0° 583
2.0	1.11 1.15	E(0°) 731 E(C90) 15.5° 330 E(C0) 16.0° 328
2.5	1.39 1.43	E(0°) 468 E(C90) 15.5° 211 E(C0) 16.0° 210
3.0	1.66 1.72	E(0°) 325 E(C90) 15.5° 147 E(C0) 16.0° 146

Distance [m] Cone diameter [m] illuminance [lx]

— C0/C180 (Half-peak divergence: 32.0°)  
— C90/C270 (Half-peak divergence: 31.0°)

### Energy efficiency class

This product contains a light source of energy efficiency class E.

### Illuminotechnical Features

Light Output Ratio (LOR)	77 %
Source lumens	1212 lm
Delivered lumens	945 lm
Consumption	8 W
Luminaire efficacy	118 lm/W
Colour temperature	4000 K
Standard Deviation of Colour Matching	2 Step MacAdam
Colour rendering index	80 Ra

Standard Operating Ambient Temperature -20 / +50°C

Ordinary temperature on the glass 40°C

### LED Life / Failure Ratio

L70 B10 C0 252000h (at Tj 65 Ta 25 )

### UGR

UGR axial	12.4
UGR transversal	12.5
X=4H   Y=8H	S=0.25H
Reflection factor	70/50/20

### OPTICAL

C0/C180 optics	31°
Light distribution simmetry	Symmetrical



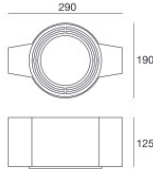
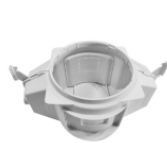
Outer casing  
 installation position: ceiling; type of installation: masonry L=200mm, H=113mm, D=137mm.  
 Material: polypropylene, colour: white.

**Code**  
89373



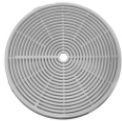
Outer casing  
 installation position: ceiling; type of installation: masonry L=370mm, H=120mm, D=200mm.  
 Material: polypropylene, colour: white.

**Code**  
89374



Outer casing - (to be completed with universal grill 99750)  
 installation position: ceiling; type of installation: masonry L=290mm, H=125mm, D=190mm

**Code**  
99749



Accessories for outer casings - Universal grille for outer casing 99749

**Code**  
99750