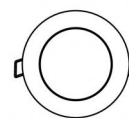




Downlights | 1 arrayLED 8 W DC 220 mA | CRI 80  
81229M30



86



Ø97

#### Technical data

|  |                        |
|--|------------------------|
| Type   | Encasement with flange |
| Installation position                          | Ceiling                |
| Installation environment                       | Outdoor                |
| Light Source                                   | LED                    |
| Circuit structure                              | arrayLED               |
| Optics   | Medium Flood           |
| Light emission direction                       | downward               |
| Nominal power                                  | 8 W DC                 |
| Source lumens                                  | 1132 lm                |
| Input voltage range                            | 220mA                  |
| CCT / Tone                                     | 2700 K                 |
| Colour rendering index                         | 80 Ra                  |
| C.C. / C.V.                                    | CC                     |
| Safety class                                   | 3                      |
| IP   | IP67                   |
| IK   | IK10                   |
| Glow wire test                                 | 850°                   |
| Direct mounting on normally flammable surfaces | Yes                    |
| CE   | Yes                    |
| Driver included                                | No                     |
| Dimmable article                               | DALI - 1-10V           |
| Directional                                    | No                     |
| Tilting  | No                     |
| Walk-over                                      | No                     |
| Drive-over                                     | No                     |
| Cable included                                 | Yes                    |
| Cable length                                   | 1 m                    |
| Resin potting                                  | Yes                    |
| Type of light emission                         | Single emission        |
| Net weight                                     | 0.5 Kg                 |
| Electrostatic discharge protection             | No                     |
| Surge protection                               | No                     |
| Product technological characteristics          | Acquastop              |

#### Finishing casing

|            |                                      |
|------------|--------------------------------------|
| Material   | Die-cast Aluminium EN AB - 46100     |
| Colour     | black                                |
| Processing | Open pore anodizing + Powder Coating |

#### Finishing diffuser

|            |                              |
|------------|------------------------------|
| Material   | Extra clear glass - Tempered |
| Colour     | transparent                  |
| Processing | Silk-screening               |

#### Finishing flange

|            |                 |
|------------|-----------------|
| Material   | AISI 316L steel |
| Colour     | steel           |
| Processing | Brushing        |

#### Electronics



99342  
On/Off Driver 198-264V AC (1 art.)

#### Cables Electrification

|                 |    |
|-----------------|----|
| Cable connector | No |
|-----------------|----|



## Downlights | 1 arrayLED 8 W DC 220 mA | CRI 80 | Base 81229M30

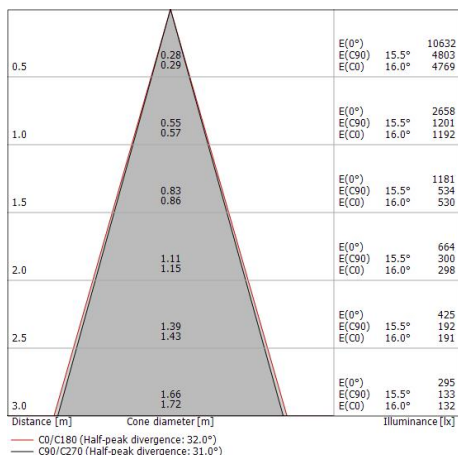
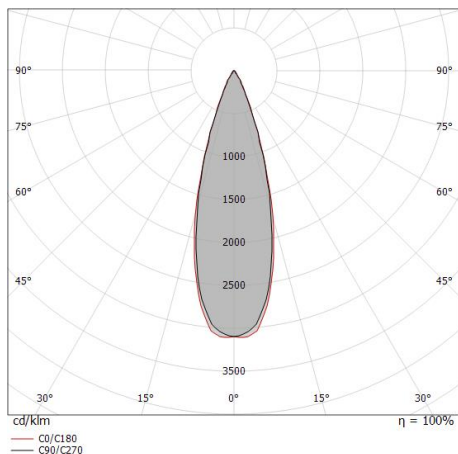
Single emission recessed downlights for outdoor application. The super warm white LED light source with a medium flood light distribution is composed of 1 arrayed LEDs with CCT of 2700 K and a CRI 80; the source luminous flux is 1132 lm, with a 141.5 lm/W nominal luminous efficacy.

The device body is made of die-cast aluminium en ab - 46100 and features a black finish, processed by means of open pore anodizing + powder coating; the diffuser is made of extra clear glass - tempered with a silk-screening treatment. The ingress protection degree is IP67; the total weight is of 0.5 kg. The power supply driver is not provided and is to be ordered separately.

The total absorbed power is 8 W. The power supply cable is included and features a 1 m length.

The device features protection class III and can be ceiling-mounted, with a 86 mm diameter hole (in plasterboard) with an outer casing, code 99749(for concrete or masonry).

Compliant with the EN 60598-1 standard and its specific provisions.



### Energy efficiency class

This product contains a light source of energy efficiency class E.

### Illuminotechnical Features

|  |                |
|--|----------------|
| Light Output Ratio (LOR)               | 75 %           |
| Source lumens                          | 1132 lm        |
| Delivered lumens                       | 859 lm         |
| Consumption                            | 8 W            |
| Luminaire efficacy                     | 107 lm/W       |
| Colour temperature                     | 2700 K         |
| Standard Deviation of Colour Matching  | 2 Step MacAdam |
| Colour rendering index                 | 80 Ra          |
| Standard Operating Ambient Temperature | -20 / +50°C    |
| Ordinary temperature on the glass      | 40°C           |

### LED Life / Failure Ratio

L70 B10 C0 252000h (at Tj 65 Ta 25 )

### UGR

|                   |          |
|-------------------|----------|
| UGR axial         | 12.1     |
| UGR transversal   | 12.2     |
| X=4H   Y=8H       | S=0.25H  |
| Reflection factor | 70/50/20 |

### OPTICAL

|                             |             |
|-----------------------------|-------------|
| C0/C180 optics              | 31°         |
| Light distribution simmetry | Symmetrical |



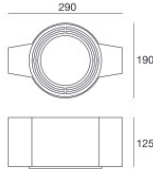
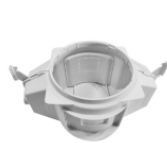
Outer casing  
 installation position: ceiling; type of installation: masonry L=200mm, H=113mm, D=137mm.  
 Material: polypropylene, colour: white.

**Code**  
89373



Outer casing  
 installation position: ceiling; type of installation: masonry L=370mm, H=120mm, D=200mm.  
 Material: polypropylene, colour: white.

**Code**  
89374



Outer casing - (to be completed with universal grill 99750)  
 installation position: ceiling; type of installation: masonry L=290mm, H=125mm, D=190mm

**Code**  
99749



Accessories for outer casings - Universal grille for outer casing 99749

**Code**  
99750