



Downlights | 1 x powerLED 5 W DC 24 V | CRI 80  
81226W15



55

Technical data	
Type	Encasement with flange
Installation position	Ceiling
Installation environment	Outdoor
Light Source	LED
Circuit structure	powerLED
Optics	Spot
Light emission direction	downward
Nominal power	5 W DC
Source lumens	490 lm
Input voltage range	24 V
CCT / Tone	3000 K
Colour rendering index	80 Ra
C.C. / C.V.	CV
Safety class	3
IP	IP67
IK	IK10
Glow wire test	850°
Direct mounting on normally flammable surfaces	Yes
CE	Yes
Driver included	No
C.V. - C.C. Converter	Converter 24V included
Dimmable article	DALI - 1-10V
Directional	No
Tilting	No
Walk-over	No
Drive-over	No
Cable included	Yes
Cable length	1 m
Resin potting	Yes
Type of light emission	Single emission
Net weight	0.2 Kg
Electrostatic discharge protection	No
Surge protection	No
Product technological characteristics	Acquastop - TVS

#### Finishing casing

Material	Die-cast Aluminium EN AB - 46100
Colour	black
Processing	Open pore anodizing + Powder Coating

#### Finishing diffuser

Material	Extra clear glass - Tempered
Colour	transparent

#### Finishing flange

Material	AISI 316L steel
Colour	steel
Processing	Brushing

#### Electronics



89488  
On/Off Driver 190~250V AC / 180~275V DC 15 W



89179  
On/Off Driver 198~264V AC 24 W



89359  
On/Off Driver 198~264V AC / 180~275V DC 48 W



99331  
On/Off Driver 198~264V AC / 176~275V DC 150 W



99660  
DALI - 1-10V Controller 24V DC 216 W



C-E500023  
DALI - 1-10V - Push and Simply Dim Controller 8~53V DC 576 W

#### Cables Electrification with converter

Cable connector	No
-----------------	----



## Downlights | 1 x powerLED 5 W DC 24 V | CRI 80 | Base 81226W15

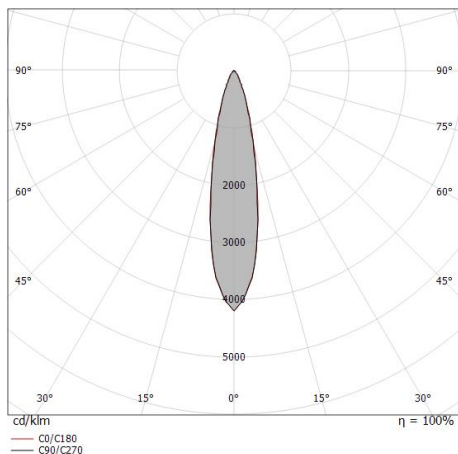
Single emission recessed downlights for outdoor application. The warm white LED light source with a spot light distribution is composed of 1 powerLEDs with CCT of 3000 K and a CRI 80; the source luminous flux is 490 lm, with a 98.0 lm/W nominal luminous efficacy.

The device body is made of die-cast aluminium en ab - 46100 and features a black finish, processed by means of open pore anodizing + powder coating; the diffuser is made of extra clear glass - tempered. The ingress protection degree is IP67; the total weight is of 0.2 kg.

The total absorbed power is 5 W. The power supply cable is included and features a 1 m length.

The device features protection class III and can be ceiling-mounted, with a 55 mm diameter hole (in plasterboard) with an outer casing, code 99749(for concrete or masonry).

Compliant with the EN 60598-1 standard and its specific provisions.



Distance [m]	Cone diameter [m]	illuminance [lx]
0.5	0.19 0.20	E(0°) 5143 E(C90) 2452 E(C0) 2434
1.0	0.39 0.39	E(0°) 1286 E(C90) 613 E(C0) 608
1.5	0.58 0.59	E(0°) 571 E(C90) 272 E(C0) 270
2.0	0.78 0.78	E(0°) 321 E(C90) 153 E(C0) 152
2.5	0.97 0.98	E(0°) 206 E(C90) 98 E(C0) 97
3.0	1.17 1.18	E(0°) 143 E(C90) 68 E(C0) 68

Distance [m] Cone diameter [m] illuminance [lx]

— C0/C180 (Half-peak divergence: 22.2°)  
— C90/C270 (Half-peak divergence: 22.0°)

### Energy efficiency class

This product contains a light source of energy efficiency class E.

### Illuminotechnical Features

Light Output Ratio (LOR)	62 %
Source lumens	490 lm
Delivered lumens	307 lm
Consumption	5 W
Luminaire efficacy	61 lm/W
Colour temperature	3000 K
Standard Deviation of Colour Matching	3 Step MacAdam
Colour rendering index	80 Ra

Standard Operating Ambient Temperature -20 / +50°C

Ordinary temperature on the glass 40°C

### LED Life / Failure Ratio

L70 B10 C0 247450h (at Tj 60 Ta 25 )

### UGR

UGR axial	15.6
UGR transversal	15.6
X=4H   Y=8H	S=0.25H
Reflection factor	70/50/20

### OPTICAL

C0/C180 optics	22°
Light distribution simmetry	Symmetrical

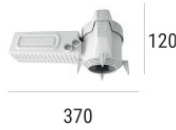


Orma\_C | Downlights | Accessories  
**81226W15**



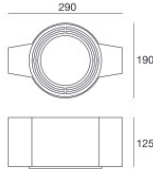
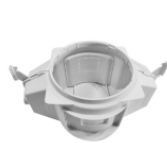
Outer casing  
 installation position: ceiling; type of installation: masonry L=200mm, H=113mm, D=137mm.  
 Material:polypropylene, colour:white.

**Code**  
89373



Outer casing  
 installation position: ceiling; type of installation: masonry L=370mm, H=120mm, D=200mm.  
 Material:polypropylene, colour:white.

**Code**  
89374



Outer casing - (to be completed with universal grill 99750)  
 installation position: ceiling; type of installation: masonry L=290mm, H=125mm, D=190mm

**Code**  
99749



Accessories for outer casings - Universal grille for outer casing 99749

**Code**  
99750