



Downlights | 1 x powerLED 4 W DC 350 mA | CRI 80  
81225M60



55

Technical data	
Type	Encasement with flange
Installation position	Ceiling
Installation environment	Outdoor
Light Source	LED
Circuit structure	powerLED
Optics	Wide Flood
Light emission direction	downward
Nominal power	4 W DC
Source lumens	490 lm
Input voltage range	350mA
CCT / Tone	2700 K
Colour rendering index	80 Ra
C.C. / C.V.	CC
Safety class	3
IP	IP67
IK	IK10
Glow wire test	850°
Direct mounting on normally flammable surfaces	Yes
CE	Yes
Driver included	No
Dimmable article	DALI - 1-10V
Directional	No
Tilting	No
Walk-over	No
Drive-over	No
Cable included	Yes
Cable length	1 m
Resin potting	Yes
Type of light emission	Single emission
Net weight	0.2 Kg
Electrostatic discharge protection	No
Surge protection	No
Optics technology	Dark light
Product technological characteristics	Acquastop - TVS

#### Finishing casing

Material	Die-cast Aluminium EN AB - 46100
Colour	black
Processing	Open pore anodizing + Powder Coating

#### Finishing diffuser

Material	Extra clear glass - Tempered
Colour	transparent

#### Finishing flange

Material	AISI 316L steel
Colour	steel
Processing	Brushing

#### Electronics



89421  
On/Off Driver 198~264V AC / 176~275V DC (1 art.)



C-E200004  
Push and Simply Dim - DALI-2 Controller (2 - 3 art.)



C-E200006  
On/Off Driver 198~264V AC / 180~275V DC (1 - 3 art.)

#### Cables Electrification

Cable connector	No
-----------------	----



## Downlights | 1 x powerLED 4 W DC 350 mA | CRI 80 | Base 81225M60

Single emission recessed downlights for outdoor application. The super warm white LED light source with a wide flood light distribution is composed of 1 powerLED LEDs with CCT of 2700 K and a CRI 80; the source luminous flux is 490 lm, with a 122.5 lm/W nominal luminous efficacy.

The device body is made of die-cast aluminium en ab - 46100 and features a black finish, processed by means of open pore anodizing + powder coating; the diffuser is made of extra clear glass - tempered. The ingress protection degree is IP67; the total weight is of 0.2 kg. The power supply driver is not provided and is to be ordered separately.

The total absorbed power is 4 W. The power supply cable is included and features a 1 m length.

The device features protection class III and can be ceiling-mounted, with a 55 mm diameter hole (in plasterboard) with an outer casing, code 99749(for concrete or masonry).

Compliant with the EN 60598-1 standard and its specific provisions.

### Energy efficiency class

This product contains a light source of energy efficiency class E.

### Illuminotechnical Features

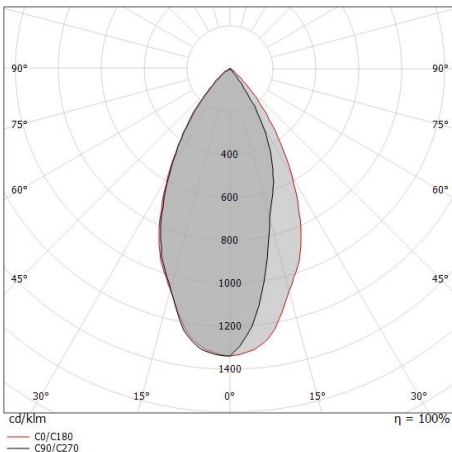
Light Output Ratio (LOR)	46 %
Source lumens	490 lm
Delivered lumens	230 lm
Consumption	4 W
Luminaire efficacy	57 lm/W
Colour temperature	2700 K
Standard Deviation of Colour Matching	3 Step MacAdam
Colour rendering index	80 Ra
Black Body Locus	On
Standard Operating Ambient Temperature	-20 / +50°C
Ordinary temperature on the glass	40°C

### LED Life / Failure Ratio

L70 B10 C0 247450h (at Tj 60 Ta 25 )

### OPTICAL

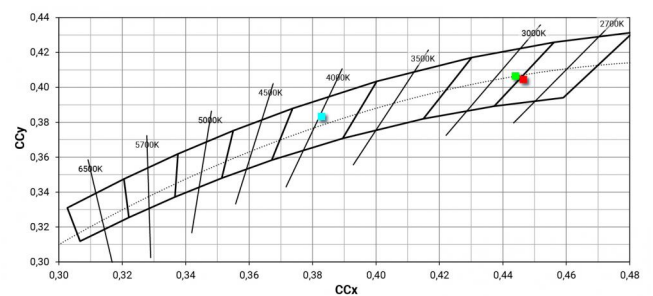
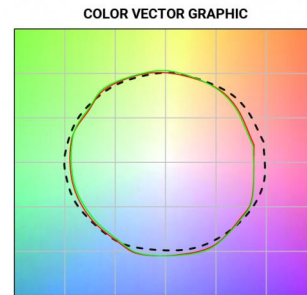
C0/C180 optics	55°
Light distribution symmetry	Asymmetrical



Distance [m]	Cone diameter [m]	0.52	1.04	1.56	2.08	2.60	3.12	$E(0^\circ)$ $E(C0)$	27.5°	1227 429
0.5								$E(0^\circ)$ $E(C0)$	27.5°	307 107
1.0								$E(0^\circ)$ $E(C0)$	27.5°	136 48
1.5								$E(0^\circ)$ $E(C0)$	27.5°	77 27
2.0								$E(0^\circ)$ $E(C0)$	27.5°	49 17
2.5								$E(0^\circ)$ $E(C0)$	27.5°	34 12
3.0								$E(0^\circ)$ $E(C0)$	27.5°	

Distance [m] Cone diameter [m] Illuminance [lx]

— C0/C180 (Half-peak divergence: 55.0°)





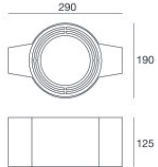
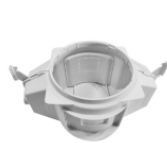
Outer casing  
 installation position: ceiling; type of installation: masonry L=200mm, H=113mm, D=137mm.  
 Material:polypropylene, colour:white.

**Code**  
89373



Outer casing  
 installation position: ceiling; type of installation: masonry L=370mm, H=120mm, D=200mm.  
 Material:polypropylene, colour:white.

**Code**  
89374



Outer casing - (to be completed with universal grill 99750)  
 installation position: ceiling; type of installation: masonry L=290mm, H=125mm, D=190mm

**Code**  
99749



Accessories for outer casings - Universal grille for outer casing 99749

**Code**  
99750