



Downlights | 1 x powerLED 4 W DC 350 mA | CRI 80
81224N15



Technical data	
Type	Encasement with flange
Installation position	Ceiling
Installation environment	Outdoor
Light Source	LED
Circuit structure	powerLED
Optics	Spot
Light emission direction	downward
Nominal power	4 W DC
Source lumens	529 lm
Input voltage range	350mA
CCT / Tone	4000 K
Colour rendering index	80 Ra
C.C. / C.V.	CC
Safety class	3
IP	IP67
IK	IK10
Glow wire test	850°
Direct mounting on normally flammable surfaces	Yes
CE	Yes
Driver included	No
Dimmable article	DALI - 1-10V
Directional	No
Tilting	No
Walk-over	No
Drive-over	No
Cable included	Yes
Cable length	1 m
Resin potting	Yes
Type of light emission	Single emission
Net weight	0.2 Kg
Electrostatic discharge protection	No
Surge protection	No
Optics technology	Honey comb
Product technological characteristics	Acquastop - TVS

Finishing casing

Material	Die-cast Aluminium EN AB - 46100
Colour	black
Processing	Open pore anodizing + Powder Coating

Finishing diffuser

Material	Extra clear glass - Tempered
Colour	transparent

Finishing flange

Material	AISI 316L steel
Colour	steel
Processing	Brushing

Electronics



89421
On/Off Driver 198~264V AC / 176~275V DC (1 art.)



C-E200004
Push and Simply Dim - DALI-2 Controller (2 - 3 art.)



C-E200006
On/Off Driver 198~264V AC / 180~275V DC (2 - 3 art.)

Cables Electrification

Cable connector	No
-----------------	----



Downlights | 1 x powerLED 4 W DC 350 mA | CRI 80 | Base 81224N15

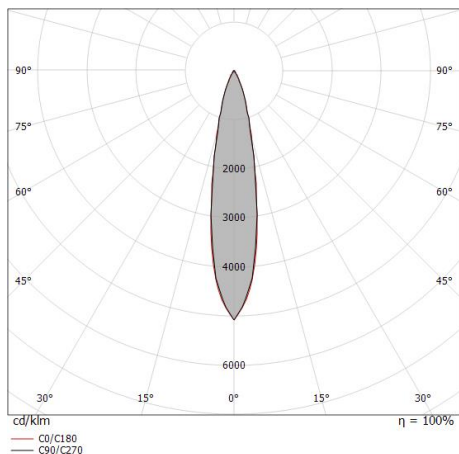
Single emission recessed downlights for outdoor application. The natural white LED light source with a spot light distribution is composed of 1 powerLEDs with CCT of 4000 K and a CRI 80; the source luminous flux is 529 lm, with a 132.3 lm/W nominal luminous efficacy.

The device body is made of die-cast aluminium en ab - 46100 and features a black finish, processed by means of open pore anodizing + powder coating; the diffuser is made of extra clear glass - tempered. The ingress protection degree is IP67; the total weight is of 0.2 kg. The power supply driver is not provided and is to be ordered separately.

The total absorbed power is 4 W. The power supply cable is included and features a 1 m length.

The device features protection class III and can be ceiling-mounted, with a 55 mm diameter hole (in plasterboard) with an outer casing, code 99749(for concrete or masonry).

Compliant with the EN 60598-1 standard and its specific provisions.



Distance [m]	Cone diameter [m]	illuminance [lx]
0.5	0.18 0.18	E(0°) 4922 E(C90) 10.2° 2360 E(C0) 10.3° 2358
1.0	0.36 0.36	E(0°) 1230 E(C90) 10.2° 590 E(C0) 10.3° 590
1.5	0.54 0.55	E(0°) 547 E(C90) 10.2° 262 E(C0) 10.3° 262
2.0	0.72 0.73	E(0°) 308 E(C90) 10.2° 147 E(C0) 10.3° 147
2.5	0.90 0.91	E(0°) 197 E(C90) 10.2° 94 E(C0) 10.3° 94
3.0	1.08 1.09	E(0°) 137 E(C90) 10.2° 66 E(C0) 10.3° 66

— C0/C180 (Half-peak divergence: 20.6°)
— C90/C270 (Half-peak divergence: 20.4°)

Energy efficiency class

This product contains a light source of energy efficiency class E.

Illuminotechnical Features

Light Output Ratio (LOR)	45 %
Source lumens	529 lm
Delivered lumens	242 lm
Consumption	4 W
Luminaire efficacy	60 lm/W
Colour temperature	4000 K
Standard Deviation of Colour Matching	3 Step MacAdam
Colour rendering index	80 Ra
Standard Operating Ambient Temperature	-20 / +50°C
Ordinary temperature on the glass	40°C

LED Life / Failure Ratio

L70 B10 C0 247450h (at Tj 60 Ta 25)

UGR

UGR axial	12.8
UGR transversal	13.3
X=4H Y=8H	S=0.25H
Reflection factor	70/50/20

OPTICAL

C0/C180 optics	20°
Light distribution simmetry	Symmetrical



Orma_C | Downlights | Accessories
81224N15



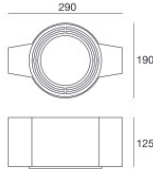
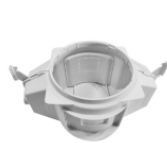
Outer casing
 installation position: ceiling; type of installation: masonry L=200mm, H=113mm, D=137mm.
 Material: polypropylene, colour: white.

Code
89373



Outer casing
 installation position: ceiling; type of installation: masonry L=370mm, H=120mm, D=200mm.
 Material: polypropylene, colour: white.

Code
89374



Outer casing - (to be completed with universal grill 99750)
 installation position: ceiling; type of installation: masonry L=290mm, H=125mm, D=190mm

Code
99749



Accessories for outer casings - Universal grille for outer casing 99749

Code
99750