



Downlights | 1 x powerLED 4 W DC 350 mA | CRI 80
81223W60



55



| Technical data | |
|--|------------------------|
| Type | Encasement with flange |
| Installation position | Ceiling |
| Installation environment | Outdoor |
| Light Source | LED |
| Circuit structure | powerLED |
| Optics | 60° |
| Light emission direction | downward |
| Nominal power | 4 W DC |
| Source lumens | 490 lm |
| Input voltage range | 350mA |
| CCT / Tone | 3000 K |
| Colour rendering index | 80 Ra |
| C.C. / C.V. | CC |
| Safety class | 3 |
| IP | IP67 |
| IK | IK10 |
| Glow wire test | 850° |
| Direct mounting on normally flammable surfaces | Yes |
| CE | Yes |
| Driver included | No |
| Dimmable article | DALI - 1-10V |
| Directional | No |
| Tilting | No |
| Walk-over | No |
| Drive-over | No |
| Cable included | Yes |
| Cable length | 1 m |
| Resin potting | Yes |
| Type of light emission | Single emission |
| Net weight | 0.2 Kg |
| Electrostatic discharge protection | No |
| Surge protection | No |
| Product technological characteristics | Acquastop - TVS |

Finishing casing

| | |
|------------|--------------------------------------|
| Material | Die-cast Aluminium EN AB - 46100 |
| Colour | black |
| Processing | Open pore anodizing + Powder Coating |

Finishing diffuser

| | |
|----------|------------------------------|
| Material | Extra clear glass - Tempered |
| Colour | transparent |

Finishing flange

| | |
|------------|-----------------|
| Material | AISI 316L steel |
| Colour | steel |
| Processing | Brushing |

Electronics



89421
On/Off Driver 198~264V AC / 176~275V DC (1 art.)



C-E200006
On/Off Driver 198~264V AC / 180~275V DC (1 - 3 art.)

Cables Electrification

| | |
|-----------------|----|
| Cable connector | No |
|-----------------|----|



Downlights | 1 x powerLED 4 W DC 350 mA | CRI 80 | Base 81223W60

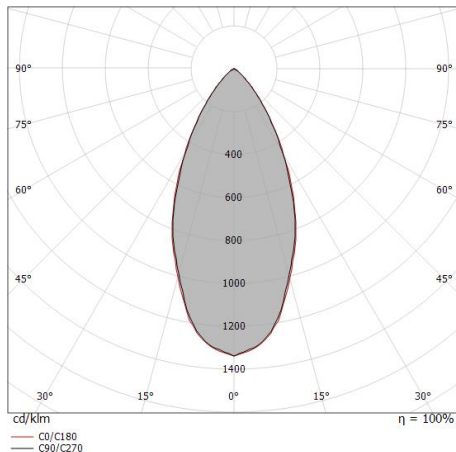
Single emission recessed downlights for outdoor application. The warm white LED light source is composed of 1 powerLEDs with CCT of 3000 K and a CRI 80; the source luminous flux is 490 lm, with a 122.5 lm/W nominal luminous efficacy.

The device body is made of die-cast aluminium en ab - 46100 and features a black finish, processed by means of open pore anodizing + powder coating; the diffuser is made of extra clear glass - tempered. The ingress protection degree is IP67; the total weight is of 0.2 kg. The power supply driver is not provided and is to be ordered separately.

The total absorbed power is 4 W. The power supply cable is included and features a 1 m length.

The device features protection class III and can be ceiling-mounted, with a 55 mm diameter hole (in plasterboard) with an outer casing, code 99749(for concrete or masonry).

Compliant with the EN 60598-1 standard and its specific provisions.



| Distance [m] | Cone diameter [m] | illuminance [lx] |
|--------------|-------------------|---------------------------------------|
| 0.5 | 0.45 0.46 | E(0°) 1599 E(C90) 608 E(C0) 602 |
| 1.0 | 0.90 0.92 | E(0°) 400 E(C90) 152 E(C0) 150 |
| 1.5 | 1.35 1.37 | E(0°) 178 E(C90) 68 E(C0) 67 |
| 2.0 | 1.80 1.83 | E(0°) 100 E(C90) 38 E(C0) 38 |
| 2.5 | 2.25 2.29 | E(0°) 64 E(C90) 24 E(C0) 24 |
| 3.0 | 2.70 2.75 | E(0°) 44 E(C90) 17 E(C0) 17 |

— C0/C180 (Half-peak divergence: 49.2°)
— C90/C270 (Half-peak divergence: 48.4°)

Energy efficiency class

This product contains a light source of energy efficiency class E.

Illuminotechnical Features

| | |
|--|----------------|
| Light Output Ratio (LOR) | 61 % |
| Source lumens | 490 lm |
| Delivered lumens | 299 lm |
| Consumption | 4 W |
| Luminaire efficacy | 74 lm/W |
| Colour temperature | 3000 K |
| Standard Deviation of Colour Matching | 3 Step MacAdam |
| Colour rendering index | 80 Ra |
| Standard Operating Ambient Temperature | -20 / +50°C |
| Ordinary temperature on the glass | 40°C |

LED Life / Failure Ratio

L70 B10 C0 247450h (at Tj 60 Ta 25)

UGR

| | |
|-------------------|----------|
| UGR axial | 19.7 |
| UGR transversal | 19.7 |
| X=4H Y=8H | S=0.25H |
| Reflection factor | 70/50/20 |

OPTICAL

| | |
|-----------------------------|-------------|
| C0/C180 optics | 48° |
| Light distribution simmetry | Symmetrical |



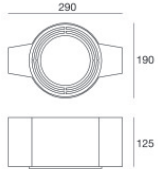
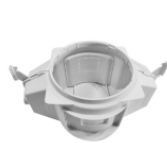
Outer casing
 installation position: ceiling; type of installation: masonry L=200mm, H=113mm, D=137mm.
 Material:polypropylene, colour:white.

Code
89373



Outer casing
 installation position: ceiling; type of installation: masonry L=370mm, H=120mm, D=200mm.
 Material:polypropylene, colour:white.

Code
89374



Outer casing - (to be completed with universal grill 99750)
 installation position: ceiling; type of installation: masonry L=290mm, H=125mm, D=190mm

Code
99749



Accessories for outer casings - Universal grille for outer casing 99749

Code
99750