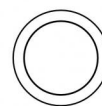




Uplights | 1 x powerLED 3 W DC 24 V | CRI 80  
81220W00



Ø85

Technical data	
Type	Walk Over
Installation position	Floor
Installation environment	Outdoor
Light Source	LED
Circuit structure	powerLED
Optics	Diffused
Light emission direction	upward
Nominal power	3 W DC
Source lumens	266 lm
Input voltage range	24 V
CCT / Tone	3000 K
Colour rendering index	80 Ra
C.C. / C.V.	CV
Safety class	3
IP	IP68
Installation limitations	Not for underwater use
IK	IK10
Glow wire test	850°
Direct mounting on normally flammable surfaces	Yes
CE	Yes
Driver included	No
C.V. - C.C. Converter	Converter 24V included
Dimmable article	No
Directional	No
Tilting	No
Walk-over	Yes
Drive-over	No
Cable included	Yes
Cable length	1 m
Resin potting	Yes
Type of light emission	Single emission
Net weight	0.5 Kg
Electrostatic discharge protection	No
Surge protection	No
Product technological characteristics	Acquastop - TVS

#### Finishing casing

Material	Die-cast Aluminium EN AB - 46100
Colour	black
Processing	Open pore anodizing + Powder Coating

#### Finishing diffuser

Material	Glass - Tempered
Colour	Opal white
Processing	Anti-slip painting

#### Finishing flange

Material	AISI 316L steel
Colour	steel
Processing	Brushing

#### Electronics



89488  
On/Off Driver 190~250V AC / 180~275V DC 15 W (1 - 4 art.)



89179  
On/Off Driver 198~264V AC 24 W (1 - 8 art.)



89359  
On/Off Driver 198~264V AC / 180~275V DC 48 W (1 - 16 art.)



99331  
On/Off Driver 198~264V AC / 176~275V DC 150 W (1 - 50 art.)



99660  
DALI - 1-10V Controller 24V DC 216 W (- art.)



83042  
1-10V - Push and Simply Dim - DALI-2 Controller (- art.)



## Uplights | 1 x powerLED 3 W DC 24 V | CRI 80 | Base 81220W00

Single emission uplights for outdoor application. The warm white LED light source with a diffused light distribution is composed of 1 powered LED with CCT of 3000 K and a CRI 80; the source luminous flux is 266 lm, with a 88.7 lm/W nominal luminous efficacy.

The device body is made of die-cast aluminium en ab - 46100 and features a black finish, processed by means of open pore anodizing + powder coating; the diffuser is made of glass - tempered with a anti-slip painting treatment. The ingress protection degree is IP68; the total weight is of 0.5 kg.

The total absorbed power is 3 W. The power supply cable is included and features a 1 m length.

The device features protection class III and can be floor-mounted with an outer casing, code 99856(for concrete or masonry).

Compliant with the EN 60598-1 standard and its specific provisions.

### Energy efficiency class

This product contains a light source of energy efficiency class D.

### Illuminotechnical Features

Light Output Ratio (LOR)	10 %
Source lumens	266 lm
Delivered lumens	29 lm
Consumption	3 W
Luminaire efficacy	9 lm/W
Colour temperature	3000 K
Standard Deviation of Colour Matching	1.5 Step
Colour rendering index	80 Ra
Standard Operating Ambient Temperature	-20 / +50°C
Ordinary temperature on the glass	40°C

### LED Life / Failure Ratio

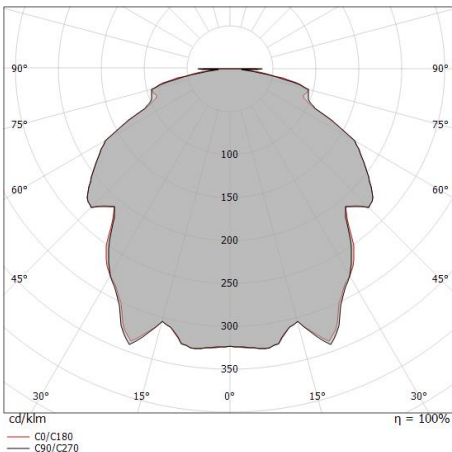
L70 B10 C0 361980h (at Tj 60 Ta 25 )

### UGR

UGR axial	20.8
UGR transversal	21
X=4H   Y=8H	S=0.25H
Reflection factor	70/50/20

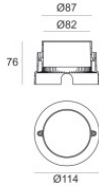
### OPTICAL

C0/C180 optics	118°
Light distribution simmetry	Symmetrical



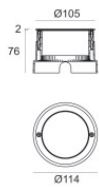
Distance [m]	Cone diameter [m]	illuminance [lx]	E(0°)	E(C90)	E(C0)
0.5	1.68 1.70	34 2 2	59.2°	59.2°	59.6°
1.0	3.36 3.41	9 1 1	59.2°	59.2°	59.6°
1.5	5.03 5.11	4 0 0	59.2°	59.2°	59.6°
2.0	6.71 6.82	2 0 0	59.2°	59.2°	59.6°
2.5	8.39 8.52	1 0 0	59.2°	59.2°	59.6°
3.0	10.07 10.23	1 0 0	59.2°	59.2°	59.6°

— C0/C180 (Half-peak divergence: 119.2°)  
— C90/C270 (Half-peak divergence: 118.4°)




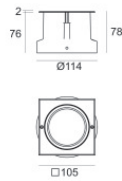
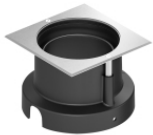
Outer casing  
 installation position: floor, land; type of installation: masonry L=114mm, H=76mm,  
 D=114mm.  
 Material:ABS Plastic, colour:black.

**Code**  
99651



Outer casing  
 installation position: floor, land; type of installation: masonry L=114mm, H=78mm,  
 D=114mm.  
 Material:AISI 316 steel, colour:steel.

**Finish**  
 **Code**  
99563



Outer casing  
 installation position: floor, land; type of installation: masonry L=105mm, H=76mm,  
 D=105mm.  
 Material:ABS Plastic, colour:black.

**Code**  
99856



Tool - Suction cup for product extraction  
 Material:plastic, colour:orange, processing:Coating.

**Code**  
83235