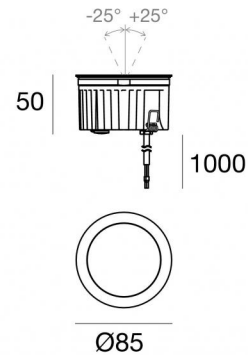




Uplights | 1 arrayLED 9 W DC 24 V | CRI 80  
81208N30



| Technical data                                 |                        |
|--|------------------------|
| Type   | Walk Over              |
| Installation position                          | Floor                  |
| Installation environment                       | Outdoor                |
| Light Source                                   | LED                    |
| Circuit structure                              | arrayLED               |
| Optics   | Medium Flood           |
| Light emission direction                       | upward                 |
| Nominal power                                  | 9 W DC                 |
| Source lumens                                  | 1354 lm                |
| Input voltage range                            | 24 V                   |
| CCT / Tone                                     | 4000 K                 |
| Colour rendering index                         | 80 Ra                  |
| C.C. / C.V.                                    | CV                     |
| Safety class                                   | 3                      |
| IP   | IP68                   |
| Installation limitations                       | Not for underwater use |
| IK   | IK10                   |
| Glow wire test                                 | 850°                   |
| Direct mounting on normally flammable surfaces | Yes                    |
| CE   | Yes                    |
| Driver included                                | No                     |
| C.V. - C.C. Converter                          | Converter 24V included |
| Dimmable article                               | No                     |
| Directional                                    | No                     |
| Tilting  | Yes                    |
| total angle (vertical plane)                   | 50 °                   |
| Walk-over                                      | Yes                    |
| Drive-over                                     | No                     |
| Cable included                                 | Yes                    |
| Cable length                                   | 1 m                    |
| Resin potting                                  | Yes                    |
| Type of light emission                         | Single emission        |
| Net weight                                     | 0.5 Kg                 |
| Electrostatic discharge protection             | No                     |
| Surge protection                               | No                     |
| Product technological characteristics          | Acquastop              |

#### Finishing casing

|            |                                      |
|------------|--------------------------------------|
| Material   | Die-cast Aluminium EN AB - 46100     |
| Colour     | black                                |
| Processing | Open pore anodizing + Powder Coating |

#### Finishing diffuser

|            |                              |
|------------|------------------------------|
| Material   | Extra clear glass - Tempered |
| Colour     | transparent                  |
| Processing | Silk-screening               |

#### Finishing flange

|            |                 |
|------------|-----------------|
| Material   | AISI 316L steel |
| Colour     | steel           |
| Processing | Brushing        |

#### Electronics



89179  
On/Off Driver 198-264V AC 24 W (1 - 2 art.)



89359  
On/Off Driver 198-264V AC / 180-275V DC 48 W (1 - 5 art.)



99331  
On/Off Driver 198-264V AC / 176-275V DC 150 W (1 - 16 art.)



99660  
DALI - 1-10V Controller 24V DC 216 W (- art.)



83042  
1-10V - Push and Simply Dim - DALI-2 Controller (- art.)



## Uplights | 1 arrayLED 9 W DC 24 V | CRI 80 | Base 81208N30

Single emission uplights for outdoor application. The natural white LED light source with a medium flood light distribution is composed of 1 arrayed LEDs with CCT of 4000 K and a CRI 80; the source luminous flux is 1354 lm, with a 150.4 lm/W nominal luminous efficacy.

The device body is made of die-cast aluminium en ab - 46100 and features a black finish, processed by means of open pore anodizing + powder coating; the diffuser is made of extra clear glass - tempered with a silk-screening treatment. The ingress protection degree is IP68; the total weight is of 0.5 kg.

The total absorbed power is 9 W. The power supply cable is included and features a 1 m length.

The device features protection class III and can be floor-mounted with an outer casing, code 99856(for concrete or masonry).

Compliant with the EN 60598-1 standard and its specific provisions.

### Energy efficiency class

This product contains a light source of energy efficiency class E.

### Illuminotechnical Features

|  |                |
|--|----------------|
| Light Output Ratio (LOR)               | 78 %           |
| Source lumens                          | 1354 lm        |
| Delivered lumens                       | 1069 lm        |
| Consumption                            | 9 W            |
| Luminaire efficacy                     | 118 lm/W       |
| Colour temperature                     | 4000 K         |
| Standard Deviation of Colour Matching  | 2 Step MacAdam |
| Colour rendering index                 | 80 Ra          |
| Standard Operating Ambient Temperature | -20 / +50°C    |
| Ordinary temperature on the glass      | 40°C           |

### LED Life / Failure Ratio

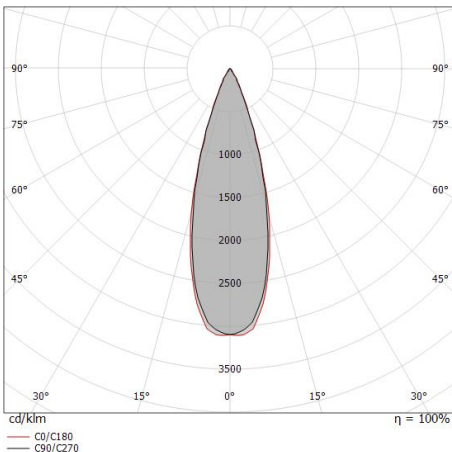
L70 B10 C0 252000h (at Tj 65 Ta 25 )

### UGR

|                   |          |
|-------------------|----------|
| UGR axial         | 12.8     |
| UGR transversal   | 12.9     |
| X=4H   Y=8H       | S=0.25H  |
| Reflection factor | 70/50/20 |

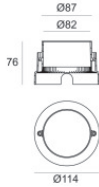
### OPTICAL

|                             |             |
|-----------------------------|-------------|
| C0/C180 optics              | 31°         |
| Light distribution simmetry | Symmetrical |



| Distance [m] | Cone diameter [m] | illuminance [lx]                                     |
|--------------|-------------------|--|
| 0.5          | 0.28<br>0.29      | E(0°) 13038<br>E(C90) 15.5° 5890<br>E(C0) 16.0° 5848 |
| 1.0          | 0.55<br>0.57      | E(0°) 3259<br>E(C90) 15.5° 1472<br>E(C0) 16.0° 1462  |
| 1.5          | 0.83<br>0.86      | E(0°) 1449<br>E(C90) 15.5° 654<br>E(C0) 16.0° 650    |
| 2.0          | 1.11<br>1.15      | E(0°) 815<br>E(C90) 15.5° 368<br>E(C0) 16.0° 366     |
| 2.5          | 1.39<br>1.43      | E(0°) 522<br>E(C90) 15.5° 236<br>E(C0) 16.0° 234     |
| 3.0          | 1.66<br>1.72      | E(0°) 362<br>E(C90) 15.5° 164<br>E(C0) 16.0° 162     |

— C0/C180 (Half-peak divergence: 32.0°)  
— C90/C270 (Half-peak divergence: 31.0°)



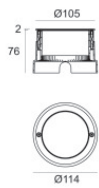
Outer casing

installation position: floor, land; type of installation: masonry L=114mm, H=76mm, D=114mm.

Material:ABS Plastic, colour:black.

**Code**

99651



Outer casing

installation position: floor, land; type of installation: masonry L=114mm, H=78mm, D=114mm.

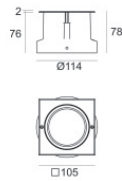
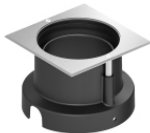
Material:AISI 316 steel, colour:steel.

**Finish**



**Code**

99563



Outer casing

installation position: floor, land; type of installation: masonry L=105mm, H=76mm, D=105mm.

Material:ABS Plastic, colour:black.

**Code**

99856