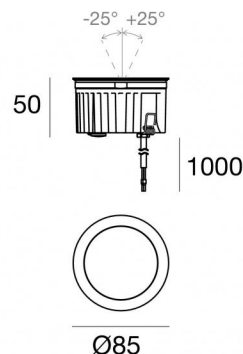




Uplights | 1 arrayLED 8 W DC 220 mA | CRI 80
81207W30



Technical data	
Type	Walk Over
Installation position	Floor
Installation environment	Outdoor
Light Source	LED
Circuit structure	arrayLED
Optics	Medium Flood
Light emission direction	upward
Nominal power	8 W DC
Source lumens	1126 lm
Input voltage range	220mA
CCT / Tone	3000 K
Colour rendering index	80 Ra
C.C. / C.V.	CC
Safety class	3
IP	IP68
Installation limitations	Not for underwater use
IK	IK10
Glow wire test	850°
Direct mounting on normally flammable surfaces	Yes
CE	Yes
Driver included	No
Dimmable article	DALI - 1-10V
Directional	No
Tilting	Yes
total angle (vertical plane)	50 °
Walk-over	Yes
Drive-over	No
Cable included	Yes
Cable length	1 m
Resin potting	Yes
Type of light emission	Single emission
Net weight	0.5 Kg
Electrostatic discharge protection	No
Surge protection	No
Product technological characteristics	Acquastop

Finishing casing

Material	Die-cast Aluminium EN AB - 46100
Colour	black
Processing	Open pore anodizing + Powder Coating

Finishing diffuser

Material	Extra clear glass - Tempered
Colour	transparent
Processing	Silk-screening

Finishing flange

Material	AISI 316L steel
Colour	steel
Processing	Brushing

Electronics



99342
On/Off Driver 198-264V AC (1 art.)

Cables Electrification

Cable connector	No
-----------------	----



Uplights | 1 arrayLED 8 W DC 220 mA | CRI 80 | Base 81207W30

Single emission uplights for outdoor application. The warm white LED light source with a medium flood light distribution is composed of 1 arrayed LEDs with CCT of 3000 K and a CRI 80; the source luminous flux is 1126 lm, with a 140.8 lm/W nominal luminous efficacy.

The device body is made of die-cast aluminium en ab - 46100 and features a black finish, processed by means of open pore anodizing + powder coating; the diffuser is made of extra clear glass - tempered with a silk-screening treatment. The ingress protection degree is IP68; the total weight is of 0.5 kg. The power supply driver is not provided and is to be ordered separately.

The total absorbed power is 8 W. The power supply cable is included and features a 1 m length.

The device features protection class III and can be floor-mounted with an outer casing, code 99856(for concrete or masonry).

Compliant with the EN 60598-1 standard and its specific provisions.

Energy efficiency class

This product contains a light source of energy efficiency class E.

Illuminotechnical Features

Light Output Ratio (LOR)	79 %
Source lumens	1126 lm
Delivered lumens	895 lm
Consumption	8 W
Luminaire efficacy	111 lm/W
Colour temperature	3000 K
Standard Deviation of Colour Matching	2 Step MacAdam
Colour rendering index	80 Ra
Black Body Locus	On
Standard Operating Ambient Temperature	-20 / +50°C
Ordinary temperature on the glass	40°C

LED Life / Failure Ratio

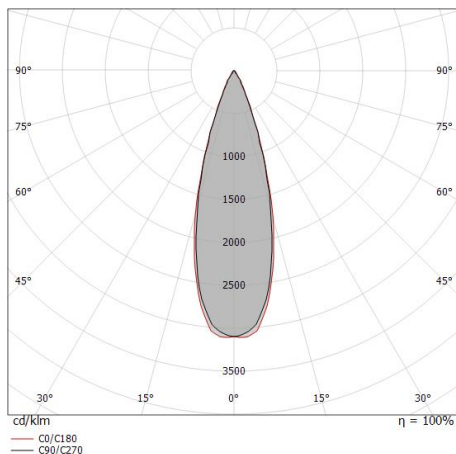
L70 B10 C0 252000h (at Tj 65 Ta 25)

UGR

UGR axial	12.2
UGR transversal	12.3
X=4H Y=8H	S=0.25H
Reflection factor	70/50/20

OPTICAL

C0/C180 optics	31°
Light distribution simmetry	Symmetrical



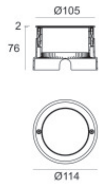
Distance [m]	Cone diameter [m]	illuminance [lx]
0.5	0.28 0.29	E(0°) 11080 E(C90) 15.5° 5005 E(C0) 16.0° 4970
1.0	0.55 0.57	E(0°) 2770 E(C90) 15.5° 1251 E(C0) 16.0° 1243
1.5	0.83 0.86	E(0°) 1231 E(C90) 15.5° 556 E(C0) 16.0° 552
2.0	1.11 1.15	E(0°) 693 E(C90) 15.5° 313 E(C0) 16.0° 311
2.5	1.39 1.43	E(0°) 443 E(C90) 15.5° 200 E(C0) 16.0° 199
3.0	1.66 1.72	E(0°) 308 E(C90) 15.5° 139 E(C0) 16.0° 138






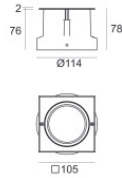
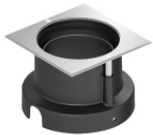
Outer casing
 installation position: floor, land; type of installation: masonry L=114mm, H=76mm,
 D=114mm.
 Material:ABS Plastic, colour:black.

Code
99651



Outer casing
 installation position: floor, land; type of installation: masonry L=114mm, H=78mm,
 D=114mm.
 Material:AISI 316 steel, colour:steel.

Finish
 **Code**
99563



Outer casing
 installation position: floor, land; type of installation: masonry L=105mm, H=76mm,
 D=105mm.
 Material:ABS Plastic, colour:black.

Code
99856