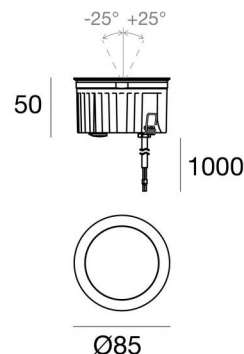




Uplights | 1 arrayLED 8 W DC 220 mA | CRI 80  
81207N60



Technical data	
Type	Walk Over
Installation position	Floor
Installation environment	Outdoor
Light Source	LED
Circuit structure	arrayLED
Optics	Wide Flood
Light emission direction	upward
Nominal power	8 W DC
Source lumens	1212 lm
Input voltage range	220mA
CCT / Tone	4000 K
Colour rendering index	80 Ra
C.C. / C.V.	CC
Safety class	3
IP	IP68
Installation limitations	Not for underwater use
IK	IK10
Glow wire test	850°
Direct mounting on normally flammable surfaces	Yes
CE	Yes
Driver included	No
Dimmable article	DALI - 1-10V
Directional	No
Tilting	Yes
total angle (vertical plane)	50 °
Walk-over	Yes
Drive-over	No
Cable included	Yes
Cable length	1 m
Resin potting	Yes
Type of light emission	Single emission
Net weight	0.5 Kg
Electrostatic discharge protection	No
Surge protection	No
Product technological characteristics	Acquastop

#### Finishing casing

Material	Die-cast Aluminium EN AB - 46100
Colour	black
Processing	Open pore anodizing + Powder Coating

#### Finishing diffuser

Material	Extra clear glass - Tempered
Colour	transparent
Processing	Silk-screening

#### Finishing flange

Material	AISI 316L steel
Colour	steel
Processing	Brushing

#### Electronics



99342  
On/Off Driver 198-264V AC (1 art.)



## Uplights | 1 arrayLED 8 W DC 220 mA | CRI 80 | Base 81207N60

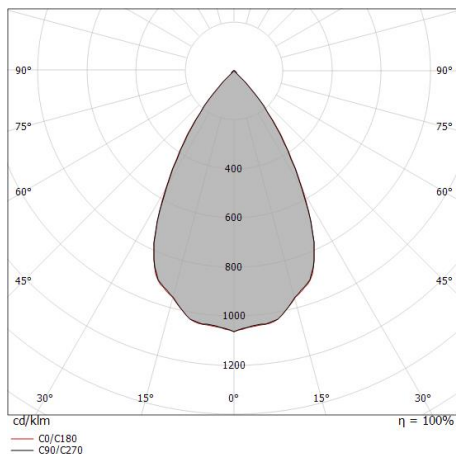
Single emission uplights for outdoor application. The natural white LED light source with a wide flood light distribution is composed of 1 arrayed LEDs with CCT of 4000 K and a CRI 80; the source luminous flux is 1212 lm, with a 151.5 lm/W nominal luminous efficacy.

The device body is made of die-cast aluminium en ab - 46100 and features a black finish, processed by means of open pore anodizing + powder coating; the diffuser is made of extra clear glass - tempered with a silk-screening treatment. The ingress protection degree is IP68; the total weight is of 0.5 kg. The power supply driver is not provided and is to be ordered separately.

The total absorbed power is 8 W. The power supply cable is included and features a 1 m length.

The device features protection class III and can be floor-mounted with an outer casing, code 99856(for concrete or masonry).

Compliant with the EN 60598-1 standard and its specific provisions.



Distance [m]	Cone diameter [m]	illuminance [lx]
0.5	0.59 0.59	E(0°) 3638 E(C90) 30.5° 1165 E(C0) 30.6° 1165
1.0	1.18 1.18	E(0°) 909 E(C90) 30.5° 291 E(C0) 30.6° 291
1.5	1.77 1.77	E(0°) 404 E(C90) 30.5° 129 E(C0) 30.6° 129
2.0	2.36 2.37	E(0°) 227 E(C90) 30.5° 73 E(C0) 30.6° 73
2.5	2.95 2.96	E(0°) 146 E(C90) 30.5° 47 E(C0) 30.6° 47
3.0	3.53 3.55	E(0°) 101 E(C90) 30.5° 32 E(C0) 30.6° 32

Distance [m]      Cone diameter [m]      illuminance [lx]

— C0/C180 (Half-peak divergence: 61.2°)  
— C90/C270 (Half-peak divergence: 61.0°)

### Energy efficiency class

This product contains a light source of energy efficiency class E.

### Illuminotechnical Features

Light Output Ratio (LOR)	71 %
Source lumens	1212 lm
Delivered lumens	869 lm
Consumption	8 W
Luminaire efficacy	108 lm/W
Colour temperature	4000 K
Standard Deviation of Colour Matching	2 Step MacAdam
Colour rendering index	80 Ra
Standard Operating Ambient Temperature	-20 / +50°C
Ordinary temperature on the glass	40°C

### LED Life / Failure Ratio

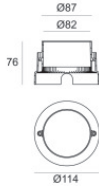
L70 B10 C0 252000h (at Tj 65 Ta 25 )

### UGR

UGR axial	19.4
UGR transversal	19.5
X=4H   Y=8H	S=0.25H
Reflection factor	70/50/20

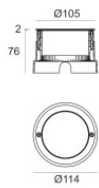
### OPTICAL

C0/C180 optics	61°
Light distribution simmetry	Symmetrical




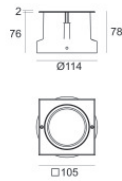
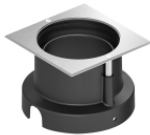
Outer casing  
 installation position: floor, land; type of installation: masonry L=114mm, H=76mm,  
 D=114mm.  
 Material:ABS Plastic, colour:black.

**Code**  
99651



Outer casing  
 installation position: floor, land; type of installation: masonry L=114mm, H=78mm,  
 D=114mm.  
 Material:AISI 316 steel, colour:steel.

**Finish**  
 **Code**  
99563



Outer casing  
 installation position: floor, land; type of installation: masonry L=105mm, H=76mm,  
 D=105mm.  
 Material:ABS Plastic, colour:black.

**Code**  
99856