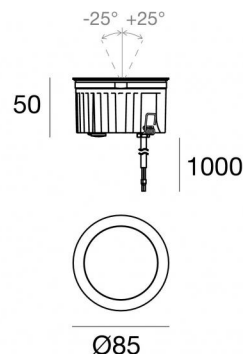




Uplights | 1 arrayLED 8 W DC 220 mA | CRI 80  
81207N15



| Technical data                                 |                        |
|--|------------------------|
| Type   | Walk Over              |
| Installation position                          | Floor                  |
| Installation environment                       | Outdoor                |
| Light Source                                   | LED                    |
| Circuit structure                              | arrayLED               |
| Optics   | Spot                   |
| Light emission direction                       | upward                 |
| Nominal power                                  | 8 W DC                 |
| Source lumens                                  | 1188 lm                |
| Input voltage range                            | 220mA                  |
| CCT / Tone                                     | 4000 K                 |
| Colour rendering index                         | 80 Ra                  |
| C.C. / C.V.                                    | CC                     |
| Safety class                                   | 3                      |
| IP   | IP68                   |
| Installation limitations                       | Not for underwater use |
| IK   | IK10                   |
| Glow wire test                                 | 850°                   |
| Direct mounting on normally flammable surfaces | Yes                    |
| CE   | Yes                    |
| Driver included                                | No                     |
| Dimmable article                               | DALI - 1-10V           |
| Directional                                    | No                     |
| Tilting  | Yes                    |
| total angle (vertical plane)                   | 50 °                   |
| Walk-over                                      | Yes                    |
| Drive-over                                     | No                     |
| Cable included                                 | Yes                    |
| Cable length                                   | 1 m                    |
| Resin potting                                  | Yes                    |
| Type of light emission                         | Single emission        |
| Net weight                                     | 0.5 Kg                 |
| Electrostatic discharge protection             | No                     |
| Surge protection                               | No                     |
| Product technological characteristics          | Acquastop              |

#### Finishing casing

|            |                                      |
|------------|--------------------------------------|
| Material   | Die-cast Aluminium EN AB - 46100     |
| Colour     | black                                |
| Processing | Open pore anodizing + Powder Coating |

#### Finishing diffuser

|            |                              |
|------------|------------------------------|
| Material   | Extra clear glass - Tempered |
| Colour     | transparent                  |
| Processing | Silk-screening               |

#### Finishing flange

|            |                 |
|------------|-----------------|
| Material   | AISI 316L steel |
| Colour     | steel           |
| Processing | Brushing        |

#### Electronics



99342  
On/Off Driver 198-264V AC (1 art.)

#### Cables Electrification

|                 |    |
|-----------------|----|
| Cable connector | No |
|-----------------|----|



## Uplights | 1 arrayLED 8 W DC 220 mA | CRI 80 | Base 81207N15

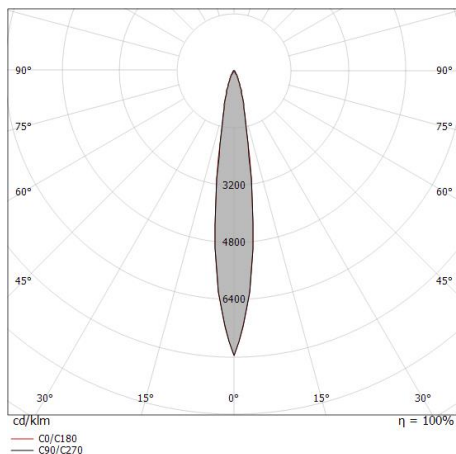
Single emission uplights for outdoor application. The natural white LED light source with a spot light distribution is composed of 1 arrayed LEDs with CCT of 4000 K and a CRI 80; the source luminous flux is 1188 lm, with a 148.5 lm/W nominal luminous efficacy.

The device body is made of die-cast aluminium en ab - 46100 and features a black finish, processed by means of open pore anodizing + powder coating; the diffuser is made of extra clear glass - tempered with a silk-screening treatment. The ingress protection degree is IP68; the total weight is of 0.5 kg. The power supply driver is not provided and is to be ordered separately.

The total absorbed power is 8 W. The power supply cable is included and features a 1 m length.

The device features protection class III and can be floor-mounted with an outer casing, code 99856(for concrete or masonry).

Compliant with the EN 60598-1 standard and its specific provisions.



| Distance [m] | Cone diameter [m] | illuminance [lx]                                     |
|--------------|-------------------|--|
| 0.5          | 0.18<br>0.18      | E(0°) 28712<br>E(C90) 7.4° 14168<br>E(C0) 7.5° 13994 |
| 1.0          | 0.26<br>0.26      | E(0°) 7178<br>E(C90) 7.4° 3542<br>E(C0) 7.5° 3498    |
| 1.5          | 0.39<br>0.39      | E(0°) 3190<br>E(C90) 7.4° 1574<br>E(C0) 7.5° 1555    |
| 2.0          | 0.52<br>0.53      | E(0°) 1794<br>E(C90) 7.4° 886<br>E(C0) 7.5° 875      |
| 2.5          | 0.65<br>0.66      | E(0°) 1148<br>E(C90) 7.4° 567<br>E(C0) 7.5° 560      |
| 3.0          | 0.78<br>0.79      | E(0°) 798<br>E(C90) 7.4° 394<br>E(C0) 7.5° 389       |

— C0/C180 (Half-peak divergence: 15.0°)  
— C90/C270 (Half-peak divergence: 14.8°)

### Energy efficiency class

This product contains a light source of energy efficiency class E.

### Illuminotechnical Features

|  |                |
|--|----------------|
| Light Output Ratio (LOR)               | 75 %           |
| Source lumens                          | 1188 lm        |
| Delivered lumens                       | 901 lm         |
| Consumption                            | 8 W            |
| Luminaire efficacy                     | 112 lm/W       |
| Colour temperature                     | 4000 K         |
| Standard Deviation of Colour Matching  | 2 Step MacAdam |
| Colour rendering index                 | 80 Ra          |
| Black Body Locus                       | On             |
| Standard Operating Ambient Temperature | -20 / +50°C    |
| Ordinary temperature on the glass      | 40°C           |

### LED Life / Failure Ratio

L70 B10 C0 252000h (at Tj 65 Ta 25 )

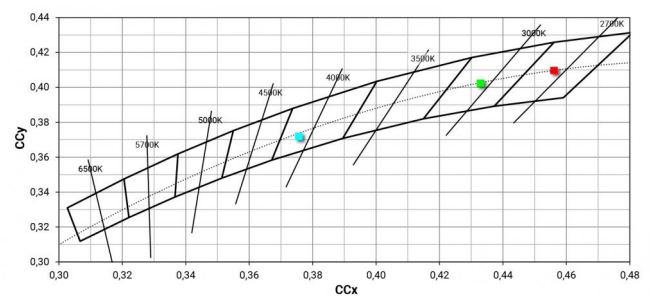
### UGR

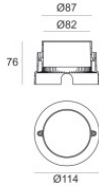
|                   |          |
|-------------------|----------|
| UGR axial         | 13       |
| UGR transversal   | 13.1     |
| X=4H   Y=8H       | S=0.25H  |
| Reflection factor | 70/50/20 |

### OPTICAL

|                             |             |
|-----------------------------|-------------|
| C0/C180 optics              | 15°         |
| Light distribution simmetry | Symmetrical |

### COLOR VECTOR GRAPHIC





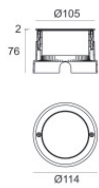
Outer casing

installation position: floor, land; type of installation: masonry L=114mm, H=76mm, D=114mm.

Material:ABS Plastic, colour:black.

**Code**

99651



Outer casing

installation position: floor, land; type of installation: masonry L=114mm, H=78mm, D=114mm.

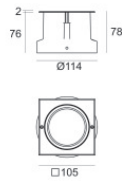
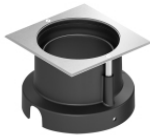
Material:AISI 316 steel, colour:steel.

**Finish**



**Code**

99563



Outer casing

installation position: floor, land; type of installation: masonry L=105mm, H=76mm, D=105mm.

Material:ABS Plastic, colour:black.

**Code**

99856