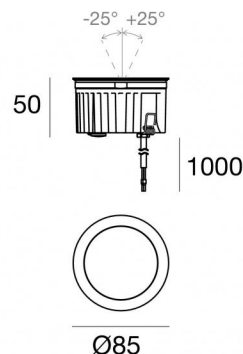




Uplights | 1 arrayLED 8 W DC 220 mA | CRI 80
81207M30



Technical data	
Type	Walk Over
Installation position	Floor
Installation environment	Outdoor
Light Source	LED
Circuit structure	arrayLED
Optics	Medium Flood
Light emission direction	upward
Nominal power	8 W DC
Source lumens	1080 lm
Input voltage range	220mA
CCT / Tone	2700 K
Colour rendering index	80 Ra
C.C. / C.V.	CC
Safety class	3
IP	IP68
Installation limitations	Not for underwater use
IK	IK10
Glow wire test	850°
Direct mounting on normally flammable surfaces	Yes
CE	Yes
Driver included	No
Dimmable article	DALI - 1-10V
Directional	No
Tilting	Yes
total angle (vertical plane)	50 °
Walk-over	Yes
Drive-over	No
Cable included	Yes
Cable length	1 m
Resin potting	Yes
Type of light emission	Single emission
Net weight	0.5 Kg
Electrostatic discharge protection	No
Surge protection	No
Product technological characteristics	Acquastop

Finishing casing

Material	Die-cast Aluminium EN AB - 46100
Colour	black
Processing	Open pore anodizing + Powder Coating

Finishing diffuser

Material	Extra clear glass - Tempered
Colour	transparent
Processing	Silk-screening

Finishing flange

Material	AISI 316L steel
Colour	steel
Processing	Brushing

Electronics



99342
On/Off Driver 198-264V AC (1 art.)

Cables Electrification

Cable connector	No
-----------------	----



Uplights | 1 arrayLED 8 W DC 220 mA | CRI 80 | Base 81207M30

Single emission uplights for outdoor application. The super warm white LED light source with a medium flood light distribution is composed of 1 arrayed LEDs with CCT of 2700 K and a CRI 80; the source luminous flux is 1080 lm, with a 135.0 lm/W nominal luminous efficacy.

The device body is made of die-cast aluminium en ab - 46100 and features a black finish, processed by means of open pore anodizing + powder coating; the diffuser is made of extra clear glass - tempered with a silk-screening treatment. The ingress protection degree is IP68; the total weight is of 0.5 kg. The power supply driver is not provided and is to be ordered separately.

The total absorbed power is 8 W. The power supply cable is included and features a 1 m length.

The device features protection class III and can be floor-mounted with an outer casing, code 99856(for concrete or masonry).

Compliant with the EN 60598-1 standard and its specific provisions.

Energy efficiency class

This product contains a light source of energy efficiency class F.

Illuminotechnical Features

Light Output Ratio (LOR)	79 %
Source lumens	1080 lm
Delivered lumens	859 lm
Consumption	8 W
Luminaire efficacy	107 lm/W
Colour temperature	2700 K
Standard Deviation of Colour Matching	2 Step MacAdam
Colour rendering index	80 Ra
Black Body Locus	On

Standard Operating Ambient Temperature	-20 / +50°C
Ordinary temperature on the glass	40°C

LED Life / Failure Ratio

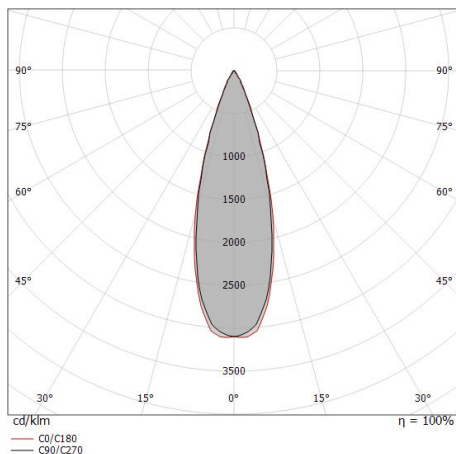
L70 B10 C0 252000h (at Tj 65 Ta 25)

UGR

UGR axial	12.1
UGR transversal	12.2
X=4H Y=8H	S=0.25H
Reflection factor	70/50/20

OPTICAL

C0/C180 optics	31°
Light distribution simmetry	Symmetrical



Distance [m]	Cone diameter [m]	illuminance [lx]
0.5	0.28 0.29	E(0°) 10632 E(C90) 15.5° 4803 E(C0) 16.0° 4769
1.0	0.55 0.57	E(0°) 2658 E(C90) 15.5° 1201 E(C0) 16.0° 1192
1.5	0.83 0.86	E(0°) 1181 E(C90) 15.5° 524 E(C0) 16.0° 530
2.0	1.11 1.15	E(0°) 664 E(C90) 15.5° 300 E(C0) 16.0° 298
2.5	1.39 1.43	E(0°) 425 E(C90) 15.5° 192 E(C0) 16.0° 191
3.0	1.66 1.72	E(0°) 295 E(C90) 15.5° 133 E(C0) 16.0° 132

— C0/C180 (Half-peak divergence: 32.0°)
— C90/C270 (Half-peak divergence: 31.0°)





Outer casing

installation position: floor, land; type of installation: masonry L=114mm, H=76mm, D=114mm.

Material:ABS Plastic, colour:black.

Code

99651



Outer casing

installation position: floor, land; type of installation: masonry L=114mm, H=78mm, D=114mm.

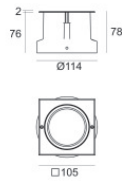
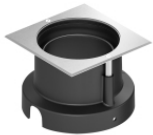
Material:AISI 316 steel, colour:steel.

Finish



Code

99563



Outer casing

installation position: floor, land; type of installation: masonry L=105mm, H=76mm, D=105mm.

Material:ABS Plastic, colour:black.

Code

99856