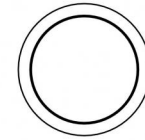
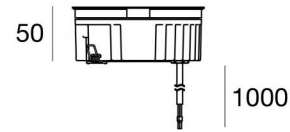




Uplights | arrayLED 0 W DC 24 V | CRI 80
81198N15



Ø125

Technical data	
Type	Walk Over
Installation position	Floor
Installation environment	Outdoor
Light Source	LED
Circuit structure	arrayLED
Optics	Spot
Light emission direction	upward
Nominal power	0 W DC
Input voltage range	24 V
CCT / Tone	4000 K
Colour rendering index	80 Ra
C.C. / C.V.	CV
Safety class	3
IP	IP68
Installation limitations	Not for underwater use
IK	IK10
Glow wire test	850°
Direct mounting on normally flammable surfaces	Yes
CE	Yes
Driver included	No
C.V. - C.C. Converter	Converter 24V included
Dimmable article	No
Directional	No
Tilting	No
Walk-over	Yes
Drive-over	No
Cable included	Yes
Cable length	1 m
Resin potting	Yes
Type of light emission	Single emission
Net weight	0.9 Kg
Electrostatic discharge protection	No
Surge protection	No
Optics technology	Dark light
Product technological characteristics	Acquastop

Finishing casing

Material	Die-cast Aluminium EN AB - 46100
Colour	black
Processing	Open pore anodizing + Powder Coating

Finishing diffuser

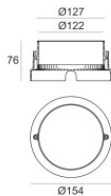
Material	Extra clear glass - Tempered
Colour	transparent
Processing	Silk-screening

Finishing flange

Material	AISI 316L steel
Colour	steel
Processing	Brushing

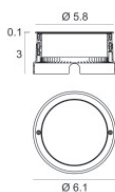
Cables Electrification

Cable connector	No
-----------------	----



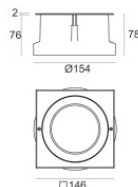
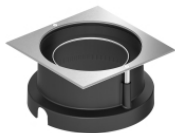
Outer casing
installation position: floor, land; type of installation: masonry L=154mm, H=76mm,
D=154mm.
Material:ABS Plastic, colour:black.

Code
99652



Outer casing
installation position: floor, land; type of installation: masonry L=105mm, H=76mm,
D=105mm.
Material:AISI 316 steel, colour:steel.

Finish
 **Code**
99564



Outer casing
installation position: floor, land; type of installation: masonry L=146mm, H=76mm,
D=146mm.
Material:AISI 316 steel, colour:steel.

Finish
 **Code**
99857