



Uplights | 1 arrayLED 12 W DC 350 mA | CRI 80
81193N30



Ø125

| Technical data | |
|--|------------------------|
| Type | Walk Over |
| Installation position | Floor |
| Installation environment | Outdoor |
| Light Source | LED |
| Circuit structure | arrayLED |
| Optics | Medium Flood |
| Light emission direction | upward |
| Nominal power | 12 W DC |
| Source lumens | 1854 lm |
| Input voltage range | 350mA |
| CCT / Tone | 4000 K |
| Colour rendering index | 80 Ra |
| C.C. / C.V. | CC |
| Safety class | 3 |
| IP | IP68 |
| Installation limitations | Not for underwater use |
| IK | IK10 |
| Glow wire test | 850° |
| Direct mounting on normally flammable surfaces | Yes |
| CE | Yes |
| Driver included | No |
| Dimmable article | DALI - 1-10V |
| Directional | No |
| Tilting | No |
| Walk-over | Yes |
| Drive-over | No |
| Cable included | Yes |
| Cable length | 1 m |
| Resin potting | Yes |
| Type of light emission | Single emission |
| Net weight | 0.9 Kg |
| Electrostatic discharge protection | No |
| Surge protection | No |
| Product technological characteristics | Acquastop |

Finishing casing

| | |
|------------|--------------------------------------|
| Material | Die-cast Aluminium EN AB - 46100 |
| Colour | black |
| Processing | Open pore anodizing + Powder Coating |

Finishing diffuser

| | |
|------------|------------------------------|
| Material | Extra clear glass - Tempered |
| Colour | transparent |
| Processing | Silk-screening |

Finishing flange

| | |
|------------|-----------------|
| Material | AISI 316L steel |
| Colour | steel |
| Processing | Brushing |

Electronics



C-E200006
On/Off Driver 198-264V AC / 180-275V DC (1 art.)

Cables Electrification

| | |
|-----------------|----|
| Cable connector | No |
|-----------------|----|



Uplights | 1 arrayLED 12 W DC 350 mA | CRI 80 | Base 81193N30

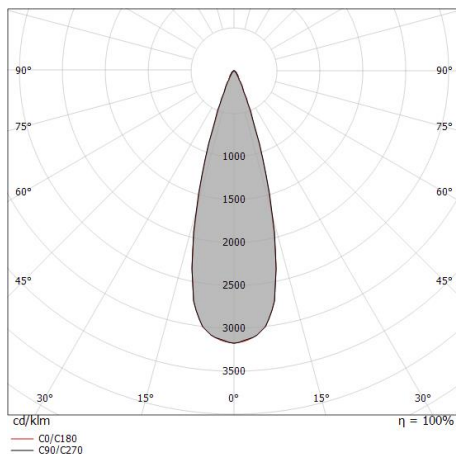
Single emission uplights for outdoor application. The natural white LED light source with a medium flood light distribution is composed of 1 arrayed LEDs with CCT of 4000 K and a CRI 80; the source luminous flux is 1854 lm, with a 154.5 lm/W nominal luminous efficacy.

The device body is made of die-cast aluminium en ab - 46100 and features a black finish, processed by means of open pore anodizing + powder coating; the diffuser is made of extra clear glass - tempered with a silk-screening treatment. The ingress protection degree is IP68; the total weight is of 0.9 kg. The power supply driver is not provided and is to be ordered separately.

The total absorbed power is 12 W. The power supply cable is included and features a 1 m length.

The device features protection class III and can be floor-mounted with an outer casing, code 99857(for concrete or masonry).

Compliant with the EN 60598-1 standard and its specific provisions.



| Distance [m] | Cone diameter [m] | illuminance [lx] |
|--------------|-------------------|--|
| 0.5 | 0.28 0.27 | E(0°) 18879 E(C90) 15.5° 8507 E(C0) 15.3° 8568 |
| 1.0 | 0.55 0.55 | E(0°) 4730 E(C90) 15.5° 2127 E(C0) 15.3° 2142 |
| 1.5 | 0.83 0.82 | E(0°) 2098 E(C90) 15.5° 945 E(C0) 15.3° 952 |
| 2.0 | 1.11 1.08 | E(0°) 1180 E(C90) 15.5° 532 E(C0) 15.3° 535 |
| 2.5 | 1.39 1.37 | E(0°) 755 E(C90) 15.5° 340 E(C0) 15.3° 343 |
| 3.0 | 1.66 1.64 | E(0°) 524 E(C90) 15.5° 236 E(C0) 15.3° 238 |

— C0/C180 (Half-peak divergence: 30.6°)
— C90/C270 (Half-peak divergence: 31.0°)

Energy efficiency class

This product contains a light source of energy efficiency class D.

Illuminotechnical Features

| | |
|--|----------------|
| Light Output Ratio (LOR) | 80 % |
| Source lumens | 1854 lm |
| Delivered lumens | 1486 lm |
| Consumption | 12 W |
| Luminaire efficacy | 123 lm/W |
| Colour temperature | 4000 K |
| Standard Deviation of Colour Matching | 2 Step MacAdam |
| Colour rendering index | 80 Ra |
| Gamut Area Index | 70 GAI |
| Colour Rendering Index | 14 R9 |
| IES TM-30 Rf | 82 |
| IES TM-30 Rg | 94 |
| Black Body Locus | On |
| Standard Operating Ambient Temperature | -20 / +50°C |
| Ordinary temperature on the glass | 40°C |

LED Life / Failure Ratio

L70 B10 C0 296960h (at Tj 65 Ta 25)

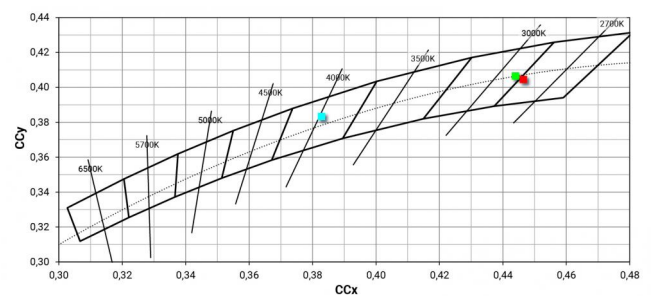
UGR

| | |
|-------------------|----------|
| UGR axial | 15.2 |
| UGR transversal | 15.3 |
| X=4H Y=8H | S=0.25H |
| Reflection factor | 70/50/20 |

OPTICAL

| | |
|-----------------------------|-------------|
| C0/C180 optics | 31° |
| Light distribution simmetry | Symmetrical |

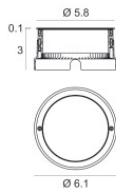
COLOR VECTOR GRAPHIC






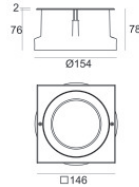
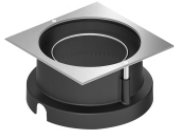
Outer casing
 installation position: floor, land; type of installation: masonry L=154mm, H=76mm,
 D=154mm.
 Material:ABS Plastic, colour:black.

Code
 99652




Outer casing
 installation position: floor, land; type of installation: masonry L=105mm, H=76mm,
 D=105mm.
 Material:AISI 316 steel, colour:steel.

Finish
 **Code**
 99564



Outer casing
 installation position: floor, land; type of installation: masonry L=146mm, H=76mm,
 D=146mm.
 Material:AISI 316 steel, colour:steel.

Finish
 **Code**
 99857