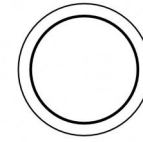
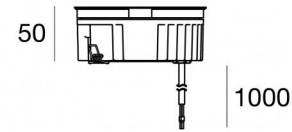




Uplights | arrayLED 0 W DC 350 mA | CRI 80
81193M15



Ø125

Technical data	
Type	Walk Over
Installation position	Floor
Installation environment	Outdoor
Light Source	LED
Circuit structure	arrayLED
Optics	Spot
Light emission direction	upward
Nominal power	0 W DC
Input voltage range	350mA
CCT / Tone	2700 K
Colour rendering index	80 Ra
C.C. / C.V.	CC
Safety class	3
IP	IP68
Installation limitations	Not for underwater use
IK	IK10
Glow wire test	850°
Direct mounting on normally flammable surfaces	Yes
CE	Yes
Driver included	No
Dimmable article	DALI - 1-10V
Directional	No
Tilting	No
Walk-over	Yes
Drive-over	No
Cable included	Yes
Cable length	1 m
Resin potting	Yes
Type of light emission	Single emission
Net weight	0.9 Kg
Electrostatic discharge protection	No
Surge protection	No
Product technological characteristics	Acquastop

Finishing casing

Material	Die-cast Aluminium EN AB - 46100
Colour	black
Processing	Open pore anodizing + Powder Coating

Finishing diffuser

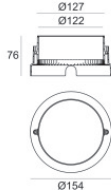
Material	Extra clear glass - Tempered
Colour	transparent
Processing	Silk-screening

Finishing flange

Material	AISI 316L steel
Colour	steel
Processing	Brushing

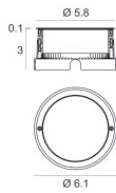
Cables Electrification

Cable connector	No
-----------------	----




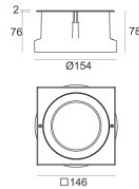
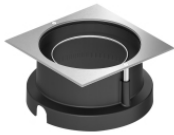
Outer casing
installation position: floor, land; type of installation: masonry L=154mm, H=76mm, D=154mm.
Material:ABS Plastic, colour:black.

Code
99652




Outer casing
installation position: floor, land; type of installation: masonry L=105mm, H=76mm, D=105mm.
Material:AISI 316 steel, colour:steel.

Finish
 **Code**
99564



Outer casing
installation position: floor, land; type of installation: masonry L=146mm, H=76mm, D=146mm.
Material:AISI 316 steel, colour:steel.

Finish
 **Code**
99857