

Warp_R EVO



Downlights | 1 arrayLED 9 W DC 700 mA | CRI 90
77369N10



| Technical data | |
|--|------------------------|
| Type | Encasement with flange |
| Installation position | Ceiling |
| Installation environment | Indoor |
| Light Source | LED |
| Circuit structure | arrayLED |
| Optics | Spot |
| Light emission direction | downward |
| Nominal power | 9 W DC |
| Source lumens | 1196 lm |
| Input voltage range | 700mA |
| CCT / Tone | 4000 K |
| Colour rendering index | 90 Ra |
| C.C. / C.V. | CC |
| Safety class | 3 |
| IP | IP40 |
| Optical compartment IP | IP65 |
| Glow wire test | 850° |
| Direct mounting on normally flammable surfaces | Yes |
| CE | Yes |
| Driver included | No |
| Dimmable article | DALI - 1-10V |
| Directional | No |
| Tilting | No |
| Walk-over | No |
| Drive-over | No |
| Cable included | Yes |
| Cable length | 0.2 m |
| Resin potting | No |
| Type of light emission | Single emission |
| Net weight | 0.3 Kg |
| Electrostatic discharge protection | No |
| Surge protection | No |
| Optics technology | Honey comb |

Finishing casing

| | |
|------------|---------------|
| Material | Technopolymer |
| Colour | Black |
| Processing | Coating |

Finishing diffuser

| | |
|----------|----------------------------|
| Material | UV Resistant Polycarbonate |
| Colour | transparent |

Finishing radiator

| | |
|------------|----------------------------------|
| Material | Die-cast Aluminium EN AB - 46100 |
| Colour | Aluminium |
| Processing | Polishing |

Electronics

| | |
|---|---|
|  | 99147 On/Off Driver 198-264V AC (1 - 2 art.) |
|  | 99735 Multi Power 198-264V AC / 180-275V DC (1 art.) |
|  | 99733 1-10V Multi Power 198-264V AC / 180-275V DC (1 art.) |
|  | C-E100012 Push and Simply Dim - DALI-2 Controller (1 art.) |
|  | C-E100016 Push and Simply Dim - DALI-2 Controller (1 - 2 art.) |

Cables Electrification

| | |
|-----------------|-----------------------------------|
| Cable connector | JST Quick connector Male + Female |
|-----------------|-----------------------------------|



Downlights | 1 arrayLED 9 W DC 700 mA | CRI 90 | Base 77369N10

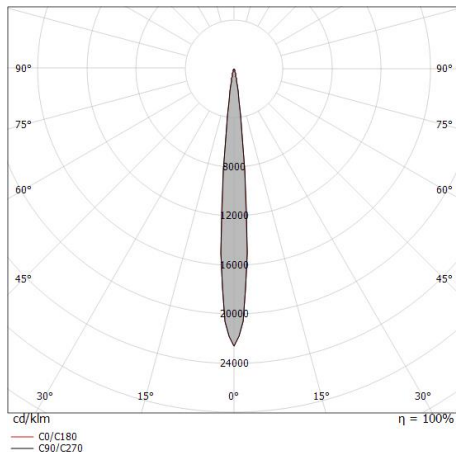
Single emission recessed downlights for indoor application. The natural white LED light source with a spot light distribution is composed of 1 arrayed LEDs with CCT of 4000 K and a CRI 90; the source luminous flux is 1196 lm, with a 132.9 lm/W nominal luminous efficacy.

The device body is made of technopolymer and features a black finish, processed by means of coating; the diffuser is made of uv resistant polycarbonate. The ingress protection degree is IP40; the total weight is of 0.3 kg. The power supply driver is not provided and is to be ordered separately.

The total absorbed power is 9 W. The power supply cable is included and features a 0.2 m length.

The device features protection class III and can be ceiling-mounted, with a 92 mm diameter hole (in plasterboard) with an outer casing, code 89374(for concrete or masonry).

Compliant with the EN 60598-1 standard and its specific provisions.



| Distance [m] | Cone diameter [m] | illuminance [lx] |
|--------------|-------------------|--|
| 0.5 | 0.09 0.09 | E(0°) 62296 E(C90) 5.1° 30814 E(C0) 4.9° 31192 |
| 1.0 | 0.18 0.17 | E(0°) 15574 E(C90) 5.1° 7704 E(C0) 4.9° 7798 |
| 1.5 | 0.27 0.26 | E(0°) 6922 E(C90) 5.1° 3424 E(C0) 4.9° 3466 |
| 2.0 | 0.36 0.34 | E(0°) 3894 E(C90) 5.1° 1926 E(C0) 4.9° 1949 |
| 2.5 | 0.45 0.43 | E(0°) 2492 E(C90) 5.1° 1233 E(C0) 4.9° 1248 |
| 3.0 | 0.54 0.51 | E(0°) 1730 E(C90) 5.1° 856 E(C0) 4.9° 866 |

Distance [m] Cone diameter [m] illuminance [lx]

— C0/C180 (Half-peak divergence: 9.8°)
— C90/C270 (Half-peak divergence: 10.2°)

Energy efficiency class

This product contains a light source of energy efficiency class E.

Illuminotechnical Features

| | |
|---------------------------------------|----------------|
| Light Output Ratio (LOR) | 57 % |
| Source lumens | 1196 lm |
| Delivered lumens | 690 lm |
| Consumption | 9 W |
| Luminaire efficacy | 76 lm/W |
| Colour temperature | 4000 K |
| Standard Deviation of Colour Matching | 2 Step MacAdam |
| Colour rendering index | 90 Ra |

Standard Operating Ambient Temperature -20 / +50°C

Ordinary temperature on the glass 40°C

LED Life / Failure Ratio

L70 B10 C0 112960h (at Tj 65 Ta 25)

UGR

UGR axial -0.1

UGR transversal -0.1

X=4H | Y=8H S=0.25H

Reflection factor 70/50/20

OPTICAL

C0/C180 optics 10°

Light distribution simmetry Symmetrical

Warp_R EVO

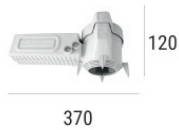


Warp_R EVO | Downlights | Accessories
77369N10



Outer casing
installation position: ceiling; type of installation: masonry L=200mm, H=113mm, D=137mm.
Material:polypropylene, colour:white.

Code
89373



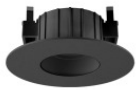
Outer casing
installation position: ceiling; type of installation: masonry L=370mm, H=120mm, D=200mm.
Material:polypropylene, colour:white.

Code
89374



White Quantum_R EVO frontal Kit

Code
83373



Black Vos_R EVO frontal Kit

Code
83378



White Vos_R EVO frontal Kit

Code
83377



Black Quantum_R EVO frontal Kit

Code
83374



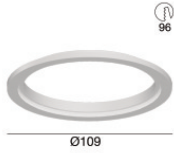
White Warp_R EVO frontal Kit

Code
83375



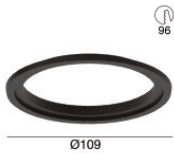
Black Warp_R EVO frontal Kit

Code
83376



White front adaptive flange for Warp EVO

Code
83395



Black front adaptive flange for Warp EVO

Code
83390



Gold Quantum_R EVO frontal Kit

Code
C-K400046



Copper Quantum EVO frontal Kit

Code
C-K400047



Copper Warp_R EVO frontal Kit

Code
C-K400049



Gold Warp_R EVO frontal Kit

Code
C-K400048



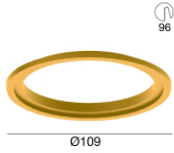
Gold Vos_R EVO frontal Kit

Code
C-K400050



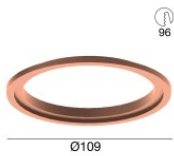
Copper Vos_R EVO frontal Kit

Code
C-K400051



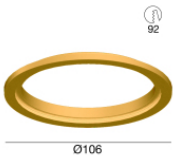
Gold front adaptive flange for Warp EVO

Code
C-K400052



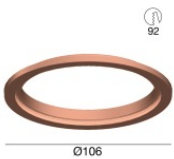
Copper front adaptive flange for Warp EVO

Code
C-K400053



Gold front adaptive flange for Quantum EVO

Code
C-K400054



Copper front adaptive flange for Quantum EVO

Code
C-K400055



Anti-glare
Anti-glare Type: honeycomb louvre.
Material:Pom-C, colour:Black.

Code
83379



Diffuser
Diffuser Type: elliptical filter

Code
83380



Diffuser
Diffuser Type: aesthetic filter

Code
83381