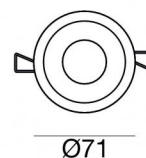
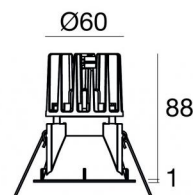


# Warp\_R EVO



Downlights | 1 x powerLED 4 W DC 350 mA | CRI 90  
77365M10



Technical data	
Type	Encasement with flange
Installation position	Ceiling
Installation environment	Indoor
Light Source	LED
Circuit structure	powerLED
Optics	Spot
Light emission direction	downward
Nominal power	4 W DC
Source lumens	389 lm
Input voltage range	350mA
CCT / Tone	2700 K
Colour rendering index	90 Ra
C.C. / C.V.	CC
Safety class	3
IP	IP40
Optical compartment IP	IP65
Glow wire test	850°
Direct mounting on normally flammable surfaces	Yes
CE	Yes
Driver included	No
Dimmable article	DALI - 1-10V
Directional	No
Tilting	No
Walk-over	No
Drive-over	No
Cable included	Yes
Cable length	0.2 m
Resin potting	No
Type of light emission	Single emission
Net weight	0.2 Kg
Electrostatic discharge protection	No
Surge protection	No
Optics technology	Honey comb

## Finishing casing

Material	Technopolymer
Colour	Black
Processing	Coating

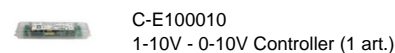
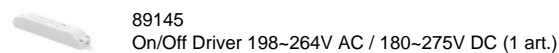
## Finishing diffuser

Material	UV Resistant Polycarbonate
Colour	transparent

## Finishing radiator

Material	Die-cast Aluminium EN AB - 46100
Colour	Aluminium
Processing	Polishing

## Electronics



## Cables Electrification

Cable connector	JST Quick connector Male + Female
-----------------	-----------------------------------



Downlights | 1 x powerLED 4 W DC 350 mA | CRI 90 | Base 77365M10

Single emission recessed downlights for indoor application. The super warm white LED light source with a spot light distribution is composed of 1 powerLED LEDs with CCT of 2700 K and a CRI 90; the source luminous flux is 389 lm, with a 97.3 lm/W nominal luminous efficacy.

The device body is made of technopolymer and features a black finish, processed by means of coating; the diffuser is made of uv resistant polycarbonate. The ingress protection degree is IP40; the total weight is of 0.2 kg. The power supply driver is not provided and is to be ordered separately.

The total absorbed power is 4 W. The power supply cable is included and features a 0.2 m length.

The device features protection class III and can be ceiling-mounted, with a 64 mm diameter hole (in plasterboard) with an outer casing, code 89374(for concrete or masonry).

Compliant with the EN 60598-1 standard and its specific provisions.

### Energy efficiency class

This product contains a light source of energy efficiency class F.

### Illuminotechnical Features

Light Output Ratio (LOR)	47 %
Source lumens	389 lm
Delivered lumens	183 lm
Consumption	4 W
Luminaire efficacy	45 lm/W
Colour temperature	2700 K
Standard Deviation of Colour Matching	3 Step MacAdam
Colour rendering index	90 Ra
Black Body Locus	On

Standard Operating Ambient Temperature	-20 / +50°C
Ordinary temperature on the glass	40°C

### LED Life / Failure Ratio

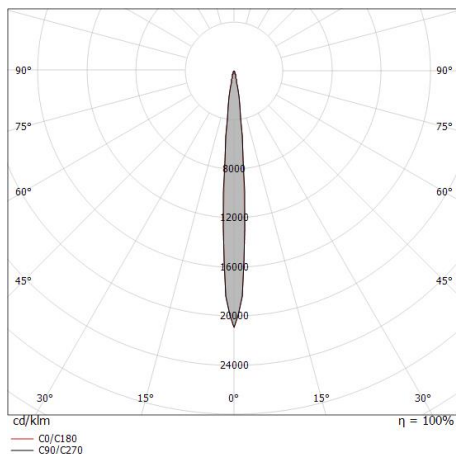
L70 B10 C0 247450h (at Tj 60 Ta 25 )

### UGR

UGR axial	-0.9
UGR transversal	-0.9
X=4H   Y=8H	S=0.25H
Reflection factor	70/50/20

### OPTICAL

C0/C180 optics	9°
Light distribution symmetry	Symmetrical



Distance [m]	Cone diameter [m]	E(0°)	E(C90)	E(C0)
0.5	0.08 0.08	15275	4.8° 7609	4.7° 7617
1.0	0.12 0.16	3819	4.8° 1902	4.7° 1904
1.5	0.25 0.25	1697	4.8° 845	4.7° 846
2.0	0.34 0.33	955	4.8° 476	4.7° 476
2.5	0.42 0.41	611	4.8° 304	4.7° 305
3.0	0.50 0.49	424	4.8° 211	4.7° 212

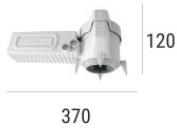
— C0/C180 (Half-peak divergence: 9.4°)  
— C90/C270 (Half-peak divergence: 9.6°)





Outer casing  
installation position: ceiling; type of installation: masonry L=200mm, H=113mm, D=137mm.  
Material:polypropylene, colour:white.

**Code**  
89373



Outer casing  
installation position: ceiling; type of installation: masonry L=370mm, H=120mm, D=200mm.  
Material:polypropylene, colour:white.

**Code**  
89374



Anti-glare  
Anti-glare Type: honeycomb louvre.  
Material:Pom-C, colour:Black.

**Code**  
83367



Diffuser  
Diffuser Type: elliptical filter

**Code**  
83368



Diffuser  
Diffuser Type: aesthetic filter

**Code**  
83369



White Quantum\_R EVO frontal Kit

**Code**  
83361



Black Quantum\_R EVO frontal Kit

**Code**  
83362



Black Vos\_R EVO frontal Kit

**Code**  
83366

# Warp\_R EVO



Warp\_R EVO | Downlights | Accessories  
**77365M10**



White Vos\_R EVO frontal Kit

**Code**  
83365



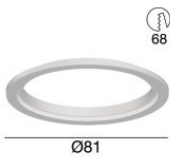
Black Warp\_R EVO frontal Kit

**Code**  
83364



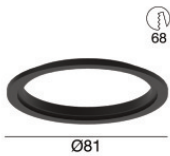
White Warp\_R EVO frontal Kit

**Code**  
83363



White front adaptive flange for Warp EVO or Quantum EVO

**Code**  
83393



Black front adaptive flange for Warp EVO or Quantum EVO

**Code**  
83394



Gold Quantum\_R EVO frontal Kit

**Code**  
C-K400038



Copper Quantum EVO frontal Kit

**Code**  
C-K400039



Gold Warp\_R EVO frontal Kit

**Code**  
C-K400040



Copper Warp\_R EVO frontal Kit

**Code**  
C-K400041



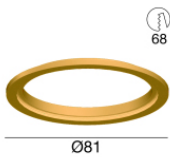
Gold Vos\_R EVO frontal Kit

**Code**  
C-K400042



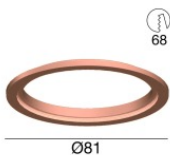
Copper Vos\_R EVO frontal Kit

**Code**  
C-K400043



Gold front adaptive flange for Warp EVO or Quantum EVO

**Code**  
C-K400044



Copper front adaptive flange for Warp EVO or Quantum EVO

**Code**  
C-K400045