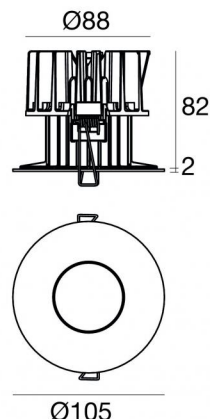
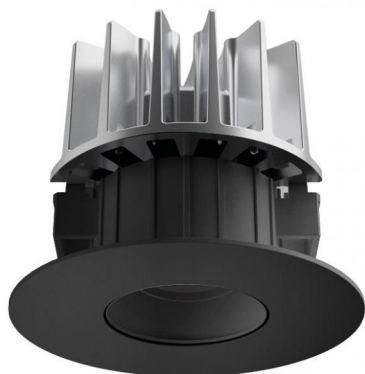




Downlights | 1 arrayLED 14 W DC 400 mA | CRI 90
77359W20



95

Technical data	
Type	Encasement with flange
Installation position	Ceiling
Installation environment	Indoor
Light Source	LED
Circuit structure	arrayLED
Optics	Flood
Light emission direction	downward
Nominal power	14 W DC
Source lumens	2318 lm
Input voltage range	400mA
CCT / Tone	3000 K
Colour rendering index	90 Ra
C.C. / C.V.	CC
Safety class	3
IP	IP40
Optical compartment IP	IP65
Glow wire test	850°
Direct mounting on normally flammable surfaces	Yes
CE	Yes
Driver included	No
Dimmable article	DALI - 1-10V
Directional	No
Tilting	No
Walk-over	No
Drive-over	No
Cable included	Yes
Cable length	0.2 m
Resin potting	No
Type of light emission	Single emission
Net weight	0.3 Kg
Electrostatic discharge protection	No
Surge protection	No
Optics technology	Honey comb

Finishing casing

Material	Technopolymer
Colour	Black
Processing	Coating


Finishing diffuser


Material	UV Resistant Polycarbonate
Colour	transparent

Finishing radiator

Material	Die-cast Aluminium EN AB - 46100
Colour	Aluminium
Processing	Polishing

Electronics

 99734
Multi Power 198~264V AC / 180~275V DC (1 art.)

 99732
1-10V Multi Power 198~264V AC / 180~275V DC (1 art.)

 83322
Push and Simply Dim - DALI-2 Controller (1 art.)

Cables Electrification

Cable connector	JST Quick connector Male + Female
-----------------	-----------------------------------

Downlights | 1 arrayLED 14 W DC 400 mA | CRI 90 | Base 77359W20

Single emission recessed downlights for indoor application. The warm white LED light source is composed of 1 arrayLEDs with CCT of 3000 K and a CRI 90; the source luminous flux is 2318 lm, with a 165.6 lm/W nominal luminous efficacy.

The device body is made of technopolymer and features a black finish, processed by means of coating; the diffuser is made of uv resistant polycarbonate. The ingress protection degree is IP40; the total weight is of 0.3 kg. The power supply driver is not provided and is to be ordered separately.

The total absorbed power is 14 W. The power supply cable is included and features a 0.2 m length.

The device features protection class III and can be ceiling-mounted, with a 95 mm diameter hole (in plasterboard) with an outer casing, code 83065(for concrete or masonry).

Compliant with the EN 60598-1 standard and its specific provisions.

Energy efficiency class

This product contains a light source of energy efficiency class E.

Illuminotechnical Features

Light Output Ratio (LOR)	54 %
Source lumens	2318 lm
Delivered lumens	1252 lm
Consumption	14 W
Luminaire efficacy	89 lm/W
Colour temperature	3000 K
Standard Deviation of Colour Matching	2 Step MacAdam
Colour rendering index	90 Ra
Colour Rendering Index	60 R9
Black Body Locus	On
Standard Operating Ambient Temperature	-20 / +50°C
Ordinary temperature on the glass	40°C

LED Life / Failure Ratio

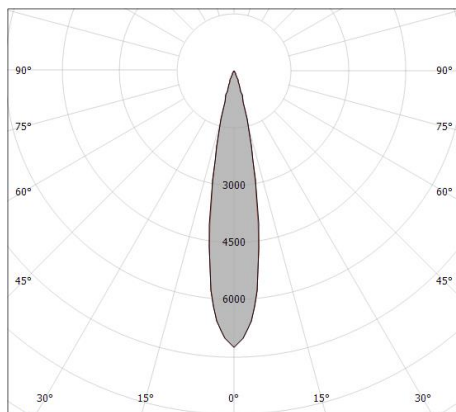
L70 B10 C0 252000h (at Tj 65 Ta 25)

UGR

UGR axial	5.4
UGR transversal	5.4
X=4H Y=8H	S=0.25H
Reflection factor	70/50/20

OPTICAL

C0/C180 optics	19°
Light distribution symmetry	Symmetrical











Distance [m]	Cone diameter [m]	illuminance [lx]
0.5	0.17 0.17	E(0°) 36286 E(C90) 17566 E(C0) 17481
1.0	0.34 0.34	E(0°) 9071 E(C90) 4352 E(C0) 4370
1.5	0.51 0.51	E(0°) 4032 E(C90) 1952 E(C0) 1942
2.0	0.68 0.68	E(0°) 2268 E(C90) 1098 E(C0) 1093
2.5	0.85 0.85	E(0°) 1451 E(C90) 703 E(C0) 699
3.0	1.03 1.01	E(0°) 1008 E(C90) 488 E(C0) 486









— C0/C180 (Half-peak divergence: 19.2°)
— C90/C270 (Half-peak divergence: 19.4°)

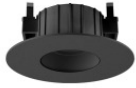




 <p>Ø106</p>	Copper front adaptive flange for Quantum EVO	Code <u>C-K400055</u>
 <p>Ø106</p>	Gold front adaptive flange for Quantum EVO	Code <u>C-K400054</u>
 <p>Ø109</p>	Copper front adaptive flange for Warp EVO	Code <u>C-K400053</u>
 <p>Ø109</p>	Gold front adaptive flange for Warp EVO	Code <u>C-K400052</u>
	Copper Vos_R EVO frontal Kit	Code <u>C-K400051</u>
	Gold Vos_R EVO frontal Kit	Code <u>C-K400050</u>
	Copper Warp_R EVO frontal Kit	Code <u>C-K400049</u>
	Gold Warp_R EVO frontal Kit	Code <u>C-K400048</u>

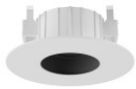


	Copper Quantum EVO frontal Kit	Code <u>C-K400047</u>
	Gold Quantum_R EVO frontal Kit	Code <u>C-K400046</u>
	Optics Light distribution: wide flood,Cover material: uv resistant polycarbonate	Code <u>83384</u>
	Optics Light distribution: medium flood,Cover material: ,uv resistant polycarbonate,uv resistant polycarbonate,uv resistant polycarbonate	Code <u>83383</u>
	Optics - Steel AISI 304L Light distribution: flood,Cover material: ,uv resistant polycarbonate,uv resistant polycarbonate,uv resistant polycarbonate	Code <u>83382</u>
	Diffuser Diffuser Type: aesthetic filter	Code <u>83381</u>
	Diffuser Diffuser Type: elliptical filter	Code <u>83380</u>
	Anti-glare Anti-glare Type: honeycomb louvre. Material:Pom-C, colour:Black.	Code <u>83379</u>



Black Vos_R EVO frontal Kit

Code
83378



White Vos_R EVO frontal Kit

Code
83377



Black Warp_R EVO frontal Kit

Code
83376



White Warp_R EVO frontal Kit

Code
83375



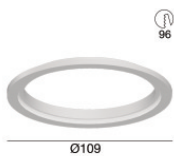
Black Quantum_R EVO frontal Kit

Code
83374



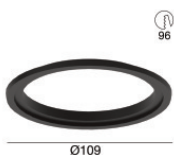
White Quantum_R EVO frontal Kit

Code
83373



White front adaptive flange for Warp EVO





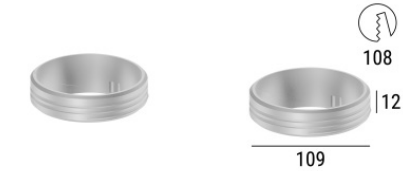
Code
83395



Black front adaptive flange for Warp EVO

Code
83390



 <p>Ø106</p>	<p>White front adaptive flange for Quantum EVO</p>	<p>Code <u>83391</u></p>
 <p>Ø106</p>	<p>Black front adaptive flange for Quantum EVO 9W-14W</p>	<p>Code <u>83392</u></p>
	<p>Outer casing installation position: ceiling; type of installation: masonry L=200mm, H=113mm, D=137mm. Material:polypropylene, colour:white.</p>	<p>Code <u>89373</u></p>
	<p>Outer casing installation position: ceiling; type of installation: masonry L=370mm, H=120mm, D=200mm. Material:polypropylene, colour:white.</p>	<p>Code <u>89374</u></p>
	<p>Outer casing installation position: ceiling; type of installation: drywall L=109mm, H=12mm, D=109mm. Material:Aluminium, colour:Anodised Aluminum, processing:Anodisation.</p>	<p>Finish Code <u>83065</u></p>