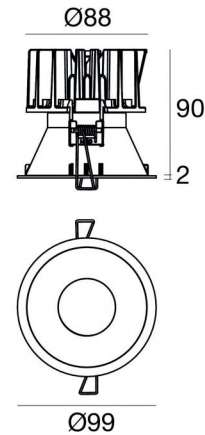


Warp_R EVO



Downlights | 1 arrayLED 9 W DC 700 mA | CRI 90
77345W10



Technical data	
Type	Encasement with flange
Installation position	Ceiling
Installation environment	Indoor
Light Source	LED
Circuit structure	arrayLED
Optics	Spot
Light emission direction	downward
Nominal power	9 W DC
Source lumens	1119 lm
Input voltage range	700mA
CCT / Tone	3000 K
Colour rendering index	90 Ra
C.C. / C.V.	CC
Safety class	3
IP	IP40
Optical compartment IP	IP65
Glow wire test	850°
Direct mounting on normally flammable surfaces	Yes
CE	Yes
Driver included	No
Dimmable article	DALI - 1-10V
Directional	No
Tilting	No
Walk-over	No
Drive-over	No
Cable included	Yes
Cable length	0.2 m
Resin potting	No
Type of light emission	Single emission
Net weight	0.3 Kg
Electrostatic discharge protection	No
Surge protection	No

Finishing casing

Material	Technopolymer
Colour	Black
Processing	Coating

Finishing diffuser

Material	UV Resistant Polycarbonate
Colour	transparent

Finishing radiator

Material	Die-cast Aluminium EN AB - 46100
Colour	Aluminium
Processing	Polishing

Electronics

	99147 On/Off Driver 198-264V AC
	99735 Multi Power 198-264V AC / 180-275V DC
	99733 1-10V Multi Power 198-264V AC / 180-275V DC
	C-E100012 Push and Simply Dim - DALI-2 Controller
	C-E100016 Push and Simply Dim - DALI-2 Controller

Cables Electrification

Cable connector	JST Quick connector Male + Female
-----------------	-----------------------------------



Downlights | 1 arrayLED 9 W DC 700 mA | CRI 90 | Base **77345W10**

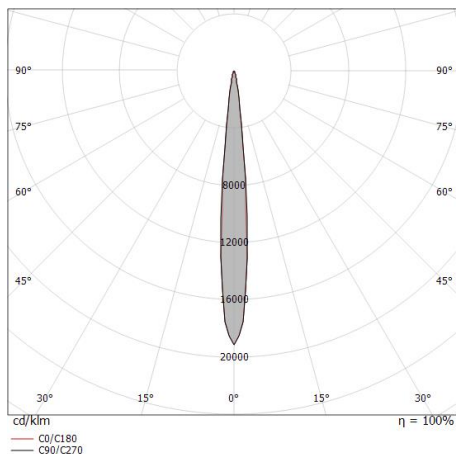
Single emission recessed downlights for indoor application. The warm white LED light source with a spot light distribution is composed of 1 arrayed LEDs with CCT of 3000 K and a CRI 90; the source luminous flux is 1119 lm, with a 124.3 lm/W nominal luminous efficacy.

The device body is made of technopolymer and features a black finish, processed by means of coating; the diffuser is made of uv resistant polycarbonate. The ingress protection degree is IP40; the total weight is of 0.3 kg. The power supply driver is not provided and is to be ordered separately.

The total absorbed power is 9 W. The power supply cable is included and features a 0.2 m length.

The device features protection class III and can be ceiling-mounted, with a 92 mm diameter hole (in plasterboard) with an outer casing, code 89374(for concrete or masonry).

Compliant with the EN 60598-1 standard and its specific provisions.



Distance [m]	Cone diameter [m]	illuminance [lx]
0.5	0.09 0.09	E(0°) 60230 E(C90) 5.2° 30281 E(C0) 5.0° 29783
1.0	0.18 0.17	E(0°) 15057 E(C90) 5.2° 7570 E(C0) 5.0° 7446
1.5	0.27 0.26	E(0°) 6692 E(C90) 5.2° 3365 E(C0) 5.0° 3309
2.0	0.36 0.35	E(0°) 3764 E(C90) 5.2° 1893 E(C0) 5.0° 1861
2.5	0.46 0.44	E(0°) 2409 E(C90) 5.2° 1211 E(C0) 5.0° 1191
3.0	0.55 0.52	E(0°) 1673 E(C90) 5.2° 841 E(C0) 5.0° 827

— C0/C180 (Half-peak divergence: 10.0°)
— C90/C270 (Half-peak divergence: 10.4°)

Energy efficiency class

This product contains a light source of energy efficiency class E.

Illuminotechnical Features

Light Output Ratio (LOR)	70 %
Source lumens	1119 lm
Delivered lumens	787 lm
Consumption	9 W
Luminaire efficacy	87 lm/W
Colour temperature	3000 K
Standard Deviation of Colour Matching	2 Step MacAdam
Colour rendering index	90 Ra

Standard Operating Ambient Temperature -20 / +50°C

Ordinary temperature on the glass 40°C

LED Life / Failure Ratio

L70 B10 C0 112960h (at Tj 65 Ta 25)

UGR

UGR axial	6.1
UGR transversal	6.1
X=4H Y=8H	S=0.25H
Reflection factor	70/50/20

OPTICAL

C0/C180 optics	10°
Light distribution simmetry	Symmetrical

Warp_R EVO

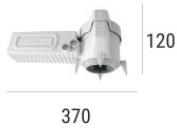


Warp_R EVO | Downlights | Accessories
77345W10



Outer casing
installation position: ceiling; type of installation: masonry L=200mm, H=113mm, D=137mm.
Material:polypropylene, colour:white.

Code
89373



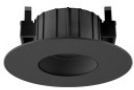
Outer casing
installation position: ceiling; type of installation: masonry L=370mm, H=120mm, D=200mm.
Material:polypropylene, colour:white.

Code
89374



White Quantum_R EVO frontal Kit

Code
83373



Black Vos_R EVO frontal Kit

Code
83378



White Vos_R EVO frontal Kit

Code
83377



Black Quantum_R EVO frontal Kit

Code
83374



White Warp_R EVO frontal Kit

Code
83375



Black Warp_R EVO frontal Kit

Code
83376



White front adaptive flange for Warp EVO

Code
83395



Black front adaptive flange for Warp EVO

Code
83390



Gold Quantum_R EVO frontal Kit

Code
C-K400046



Copper Quantum EVO frontal Kit

Code
C-K400047



Copper Warp_R EVO frontal Kit

Code
C-K400049



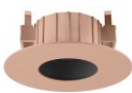
Gold Warp_R EVO frontal Kit

Code
C-K400048



Gold Vos_R EVO frontal Kit

Code
C-K400050



Copper Vos_R EVO frontal Kit

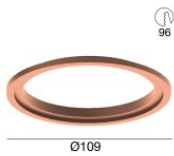
Code
C-K400051



Gold front adaptive flange for Warp EVO

Code

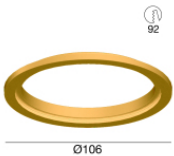
C-K400052



Copper front adaptive flange for Warp EVO

Code

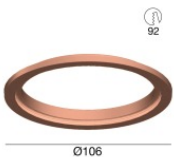
C-K400053



Gold front adaptive flange for Quantum EVO

Code

C-K400054



Copper front adaptive flange for Quantum EVO

Code

C-K400055



Anti-glare
Anti-glare Type: honeycomb louvre.
Material:Pom-C, colour:Black.

Code

83379



Diffuser
Diffuser Type: elliptical filter

Code

83380



Diffuser
Diffuser Type: aesthetic filter

Code

83381