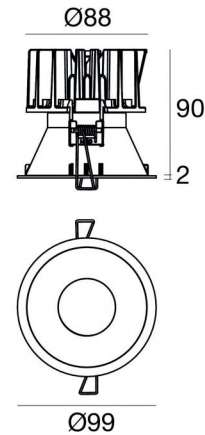


Warp_R EVO



Downlights | 1 arrayLED 9 W DC 700 mA | CRI 80
77345A10



Technical data	
Type	Encasement with flange
Installation position	Ceiling
Installation environment	Indoor
Light Source	LED
Circuit structure	arrayLED
Optics	Spot
Light emission direction	downward
Nominal power	9 W DC
Source lumens	892 lm
Input voltage range	700mA
CCT / Tone	2200 K
Colour rendering index	80 Ra
C.C. / C.V.	CC
Safety class	3
IP	IP40
Optical compartment IP	IP65
Glow wire test	850°
Direct mounting on normally flammable surfaces	Yes
CE	Yes
Driver included	No
Dimmable article	DALI - 1-10V
Directional	No
Tilting	No
Walk-over	No
Drive-over	No
Cable included	Yes
Cable length	0.2 m
Resin potting	No
Type of light emission	Single emission
Net weight	0.3 Kg
Electrostatic discharge protection	No
Surge protection	No

Finishing casing

Material	Technopolymer
Colour	Black
Processing	Coating

Finishing diffuser

Material	UV Resistant Polycarbonate
Colour	transparent

Finishing radiator

Material	Die-cast Aluminium EN AB - 46100
Colour	Aluminium
Processing	Polishing

Electronics



99147
On/Off Driver 198-264V AC



99735
Multi Power 198-264V AC / 180-275V DC



99733
1-10V Multi Power 198-264V AC / 180-275V DC



C-E100012
Push and Simply Dim - DALI-2 Controller



C-E100016
Push and Simply Dim - DALI-2 Controller

Cables Electrification

Cable connector	JST Quick connector Male + Female
-----------------	-----------------------------------



Downlights | 1 arrayLED 9 W DC 700 mA | CRI 80 | Base 77345A10

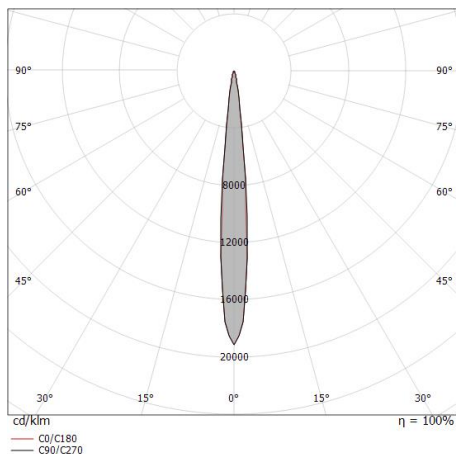
Single emission recessed downlights for indoor application. The ancient white LED light source with a spot light distribution is composed of 1 arrayed LEDs with CCT of 2200 K and a CRI 80; the source luminous flux is 892 lm, with a 99.1 lm/W nominal luminous efficacy.

The device body is made of technopolymer and features a black finish, processed by means of coating; the diffuser is made of uv resistant polycarbonate. The ingress protection degree is IP40; the total weight is of 0.3 kg. The power supply driver is not provided and is to be ordered separately.

The total absorbed power is 9 W. The power supply cable is included and features a 0.2 m length.

The device features protection class III and can be ceiling-mounted, with a 92 mm diameter hole (in plasterboard) with an outer casing, code 89374(for concrete or masonry).

Compliant with the EN 60598-1 standard and its specific provisions.



Distance [m]	Cone diameter [m]	illuminance [lx]
0.5	0.09 0.09	E(0°) 48184 E(C90) 5.2° 24225 E(C0) 5.0° 23827
1.0	0.18 0.17	E(0°) 12046 E(C90) 5.2° 6056 E(C0) 5.0° 5957
1.5	0.27 0.26	E(0°) 5354 E(C90) 5.2° 2692 E(C0) 5.0° 2647
2.0	0.36 0.35	E(0°) 3011 E(C90) 5.2° 1514 E(C0) 5.0° 1489
2.5	0.46 0.44	E(0°) 1927 E(C90) 5.2° 969 E(C0) 5.0° 953
3.0	0.55 0.52	E(0°) 1338 E(C90) 5.2° 673 E(C0) 5.0° 662

Distance [m] Cone diameter [m] illuminance [lx]

— C0/C180 (Half-peak divergence: 10.0°)
— C90/C270 (Half-peak divergence: 10.4°)

Energy efficiency class

This product contains a light source of energy efficiency class F.

Illuminotechnical Features

Light Output Ratio (LOR)	70 %
Source lumens	892 lm
Delivered lumens	629 lm
Consumption	9 W
Luminaire efficacy	69 lm/W
Colour temperature	2200 K
Standard Deviation of Colour Matching	2 Step MacAdam
Colour rendering index	80 Ra
Standard Operating Ambient Temperature	-20 / +50°C
Ordinary temperature on the glass	40°C

UGR

UGR axial	5.3
UGR transversal	5.3
X=4H Y=8H	S=0.25H
Reflection factor	70/50/20

OPTICAL

C0/C180 optics	10°
Light distribution symmetry	Symmetrical

Warp_R EVO

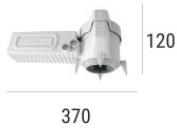


Warp_R EVO | Downlights | Accessories
77345A10



Outer casing
installation position: ceiling; type of installation: masonry L=200mm, H=113mm, D=137mm.
Material:polypropylene, colour:white.

Code
89373



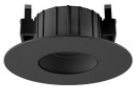
Outer casing
installation position: ceiling; type of installation: masonry L=370mm, H=120mm, D=200mm.
Material:polypropylene, colour:white.

Code
89374



White Quantum_R EVO frontal Kit

Code
83373



Black Vos_R EVO frontal Kit

Code
83378



White Vos_R EVO frontal Kit

Code
83377



Black Quantum_R EVO frontal Kit

Code
83374



White Warp_R EVO frontal Kit

Code
83375



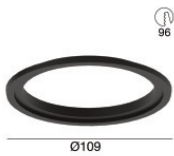
Black Warp_R EVO frontal Kit

Code
83376



White front adaptive flange for Warp EVO

Code
83395



Black front adaptive flange for Warp EVO

Code
83390



Gold Quantum_R EVO frontal Kit

Code
C-K400046



Copper Quantum EVO frontal Kit

Code
C-K400047



Copper Warp_R EVO frontal Kit

Code
C-K400049



Gold Warp_R EVO frontal Kit

Code
C-K400048



Gold Vos_R EVO frontal Kit

Code
C-K400050



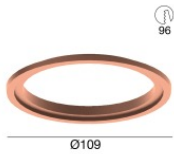
Copper Vos_R EVO frontal Kit

Code
C-K400051



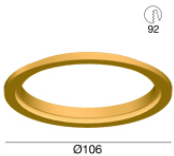
Gold front adaptive flange for Warp EVO

Code
C-K400052



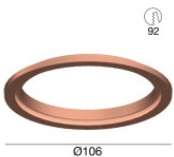
Copper front adaptive flange for Warp EVO

Code
C-K400053



Gold front adaptive flange for Quantum EVO

Code
C-K400054



Copper front adaptive flange for Quantum EVO

Code
C-K400055



Anti-glare
Anti-glare Type: honeycomb louvre.
Material:Pom-C, colour:Black.

Code
83379



Diffuser
Diffuser Type: elliptical filter

Code
83380



Diffuser
Diffuser Type: aesthetic filter

Code
83381