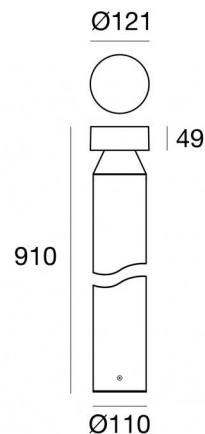
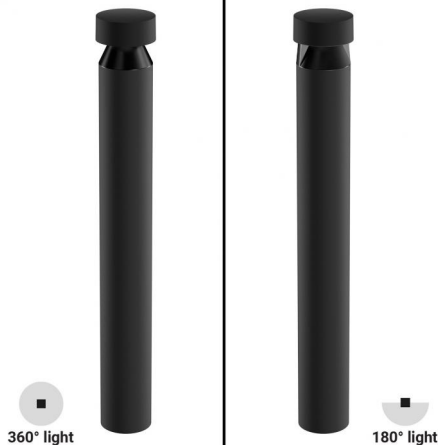


# Buzzer



Bollard & Pole  
1 arrayLED 10 W AC 200-264 V AC | CRI 80  
**76898N00**



Technical data	
Type	Bollard
Installation position	Floor
Installation environment	Outdoor
Light Source	LED
Circuit structure	arrayLED
Optics	Asymmetric 360°
Light emission direction	downward
Nominal power	10 W AC
Source lumens	1200 lm
Input voltage range	200-264V
CCT / Tone	4000 K
Colour rendering index	80 Ra
C.C. / C.V.	AC
Safety class	1
IP	IP65
IK	IK09
Glow wire test	850°
Direct mounting on normally flammable surfaces	Yes
CE	Yes
Dimmable article	No
Directional	No
Tilting	No
Walk-over	No
Drive-over	No
Cable included	No
Resin potting	Yes
Type of light emission	Radial diffusion
Net weight	2.27 Kg
Electrostatic discharge protection	No
Surge protection	1.5 KV

## Finishing casing

Material	Die-cast Aluminium EN AB - 46100
Colour	grey RAL 7021
Processing	Open pore anodizing + Powder Coating

## Finishing diffuser

Material	UV Resistant Polycarbonate
Colour	transparent

## Finishing base

Material	Die-cast Aluminium EN AB - 46100
Colour	grey RAL 7021
Processing	Open pore anodizing + Powder Coating



Bollard & Pole | 1 arrayLED 10 W AC 200-264 V AC | CRI 80 | Base  
76898N00

Radial diffusion bollard & pole for outdoor application. The natural white LED light source with a asymmetric 360° light distribution is composed of 1 arrayed LEDs with CCT of 4000 K and a CRI 80; the source luminous flux is 1200 lm, with a 120.0 lm/W nominal luminous efficacy.

The device body is made of die-cast aluminium en ab - 46100 and features a grey ral 7021 finish, processed by means of open pore anodizing + powder coating; the diffuser is made of uv resistant polycarbonate. The ingress protection degree is IP65; the total weight is of 2.27 kg.

The total absorbed power is 10 W.

The device features protection class I and can be floor-mounted.

Compliant with the EN 60598-1 standard and its specific provisions.

## Energy efficiency class

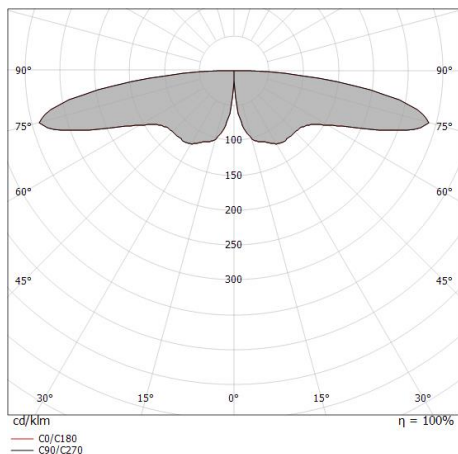
This product contains a light source of energy efficiency class E.

## Illuminotechnical Features

Light Output Ratio (LOR)	22 %
Source lumens	1200 lm
Delivered lumens	264 lm
Consumption	10 W
Luminaire efficacy	26 lm/W
Colour temperature	4000 K
Standard Deviation of Colour Matching	3 Step MacAdam
Colour rendering index	80 Ra
Standard Operating Ambient Temperature	-20 / +50°C
Ordinary temperature on the glass	40°C

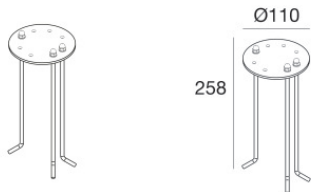
## OPTICAL

C0/C180 optics	168°
Light distribution simmetry	Symmetrical





Buzzer | Bollard & Pole | Accessories  
**76898N00**



Picket - Stainless steel bolts with positioning template  
Cover material: steel

**Code**

W-F900001