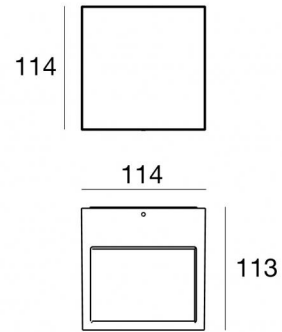
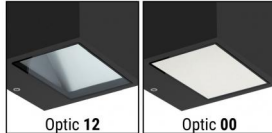


Wall Lights | 2 arrayLED 20 W AC 200-264 V AC | CRI 80  
**76565W00**



Technical data	
Type	Surface
Installation position	Wall lights
Installation environment	Outdoor
Light Source	LED
Circuit structure	arrayLED
Optics	Double Diffused
Light emission direction	downward and upward
Nominal power	20 W AC
Source lumens	2300 lm
Input voltage range	200-264V
CCT / Tone	3000 K
Colour rendering index	80 Ra
C.C. / C.V.	AC
Safety class	1
IP	IP65
IK	IK08
Glow wire test	850°
Direct mounting on normally flammable surfaces	Yes
CE	Yes
Dimmable article	No
Directional	No
Tilting	No
Walk-over	No
Drive-over	No
Cable included	No
Resin potting	No
Type of light emission	Double emission
Net weight	1.5 Kg
Electrostatic discharge protection	No
Surge protection	1.5 KV

Finishing casing	
Material	Die-cast Aluminium EN AB - 46100
Colour	Black
Processing	Open pore anodizing + Powder Coating
Finishing diffuser	
Material	Extra clear glass - Tempered
Colour	transparent
Processing	Silk-screening

## Wall Lights | 2 arrayLED 20 W AC 200-264 V AC | CRI 80 | Base 76565W00

Double emission wall lights for outdoor application. The warm white LED light source with a double diffused light distribution is composed of 2 arrayed LEDs with CCT of 3000 K and a CRI 80; the source luminous flux is 2300 lm, with a 115.0 lm/W nominal luminous efficacy.

The device body is made of die-cast aluminium en ab - 46100 and features a black finish, processed by means of open pore anodizing + powder coating; the diffuser is made of extra clear glass - tempered with a silk-screening treatment. The ingress protection degree is IP65; the total weight is of 1.5 kg.

The total absorbed power is 20 W.

The device features protection class I and can be wall lights-mounted.

Compliant with the EN 60598-1 standard and its specific provisions.

### Energy efficiency class

This product contains 2 light sources of energy efficiency class E.

### Illuminotechnical Features

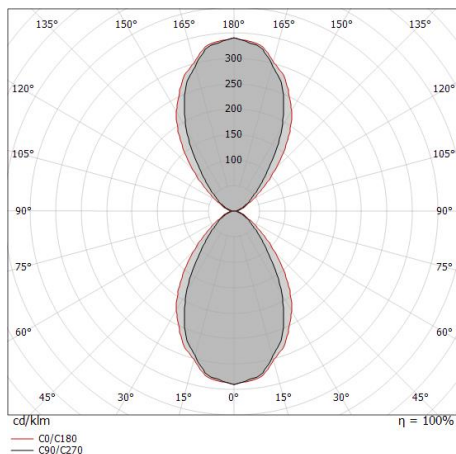
Light Output Ratio (LOR)	45 %
Source lumens	2300 lm
Delivered lumens	1035 lm
Consumption	20 W
Luminaire efficacy	51 lm/W
Colour temperature	3000 K
Standard Deviation of Colour Matching	3 Step MacAdam
Colour rendering index	80 Ra
Standard Operating Ambient Temperature	-20 / +50°C
Ordinary temperature on the glass	40°C

### UGR

UGR axial	18.6
UGR transversal	19.9
X=4H   Y=8H	S=0.25H
Reflection factor	70/50/20

### OPTICAL

C90/C270 optics	64°
C0/C180 optics	75°
Light distribution simmetry	Symmetrical 2 assis



Distance [m]	Cone diameter [m]	illuminance [lx]
0.5	0.62 0.77	E(0°) 1409 E(C90) 433 E(C0) 353
1.0	1.24 1.53	E(0°) 353 E(C90) 108 E(C0) 88
1.5	1.86 2.30	E(0°) 157 E(C90) 48 E(C0) 39
2.0	2.48 3.07	E(0°) 88 E(C90) 27 E(C0) 22
2.5	3.10 3.84	E(0°) 56 E(C90) 17 E(C0) 14
3.0	3.72 4.60	E(0°) 39 E(C90) 12 E(C0) 10

— C0/C180 (Half-peak divergence: 75.0°)  
— C90/C270 (Half-peak divergence: 63.6°)