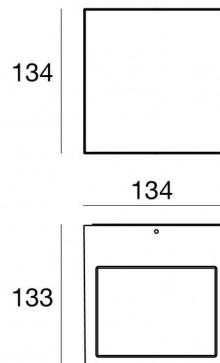




Wall Lights | 198-264 V
4 x powerLEDs - 1 arrayLED 28 W DC - 31 W AC | CRI 80
76288W30



Technical data	
Type	Surface
Installation position	Wall lights
Installation environment	Outdoor
Light Source	LED
Circuit structure	powerLEDs + arrayLED
Optics	Ultra Spot + Medium Flood
Light emission direction	downward + upward
Nominal power	28 W DC
Total Power	31 W
Source lumens	3834 lm
Nominal input voltage	220 - 240 V AC
Input voltage range	198 - 264 V AC
Frequency	50 - 60 Hz
CCT / Tone	3000 K
Colour rendering index	80 Ra
C.C. / C.V.	AC
Safety class	1
IP	IP65
IK	IK08
Glow wire test	850°
Direct mounting on normally flammable surfaces	Yes
CE	Yes
Driver included	Driver
Dimmable article	No
Directional	No
Tilting	No
Walk-over	No
Drive-over	No
Cable included	No
Resin potting	No
Type of light emission	Double emission
Net weight	2.02 Kg
Electrostatic discharge protection	Yes
Surge protection	2 KV

Finishing casing	
Material	Die-cast Aluminium EN AB - 46100
Colour	Grey
Processing	Open pore anodizing + Powder Coating
Finishing diffuser	
Material	Extra clear glass - Tempered
Colour	transparent
Processing	Silk-screening



Wall Lights | 198-264 V | 4 x powerLEDs - 1 arrayLED 28 W DC - 31 W AC | CRI 80 | Base
76288W30

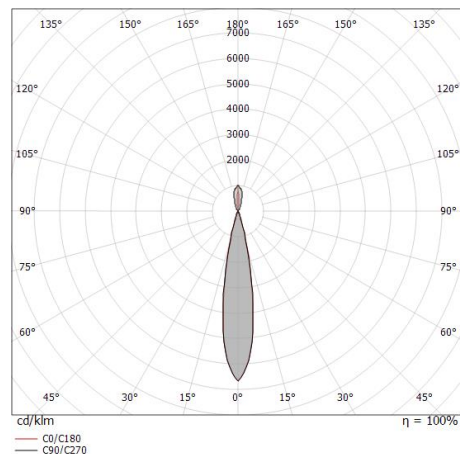
Double emission wall lights for outdoor application. The warm white LED light source with a ultra spot light distribution is composed of 4 powered LEDs with CCT of 3000 K and a CRI 80; the source luminous flux is 1888 lm, with a 134.9 lm/W nominal luminous efficacy The warm white LED light source is composed of 1 arrayled LEDs with CCT of 3000 K and a CRI 80; the source luminous flux is 1946 lm, with a 139.0 lm/W nominal luminous efficacy.

The device body is made of die-cast aluminium en ab - 46100 and features a grey finish, processed by means of open pore anodizing + powder coating; the diffuser is made of extra clear glass - tempered with a silk-screening treatment. The ingress protection degree is IP65; the total weight is of 2.02 kg.

The total absorbed power is 31 W.

The device features protection class I and can be wall lights-mounted.

Compliant with the EN 60598-1 standard and its specific provisions.



Distance [m]	Cone diameter [m]	illuminance [lx]
0.5	0.17 0.17	E(0°) 39570 E(C90) 9.8° 19152 E(C0) 9.7° 19058
1.0	0.35 0.34	E(0°) 9892 E(C90) 9.8° 4788 E(C0) 9.7° 4764
1.5	0.52 0.51	E(0°) 4397 E(C90) 9.8° 2128 E(C0) 9.7° 2118
2.0	0.69 0.68	E(0°) 2473 E(C90) 9.8° 1197 E(C0) 9.7° 1191
2.5	0.86 0.85	E(0°) 1583 E(C90) 9.8° 766 E(C0) 9.7° 762
3.0	1.04 1.03	E(0°) 1099 E(C90) 9.8° 532 E(C0) 9.7° 529

Distance [m] Cone diameter [m] illuminance [lx]

— C0/C180 (Half-peak divergence: 19.4°)
 — C90/C270 (Half-peak divergence: 19.6°)

Energy efficiency class

This product contains 2 light sources of energy efficiency class E, E.

Illuminotechnical Features

Light Output Ratio (LOR)	38 %
Source lumens	3834 lm
Delivered lumens	1482 lm
Consumption	31 W
Luminaire efficacy	47 lm/W
Colour temperature	3000 K
Standard Deviation of Colour Matching	3 Step MacAdam
Colour rendering index	80 Ra
Standard Operating Ambient Temperature	-20 / +50°C
Ordinary temperature on the glass	40°C

LED Life / Failure Ratio

L70 B10 C0 252000h (at Tj 65 Ta 25)

UGR

UGR axial	10.7
UGR transversal	11.9
X=4H Y=8H	S=0.25H
Reflection factor	70/50/20

OPTICAL

C0/C180 optics	19°
Light distribution simmetry	Symmetrical