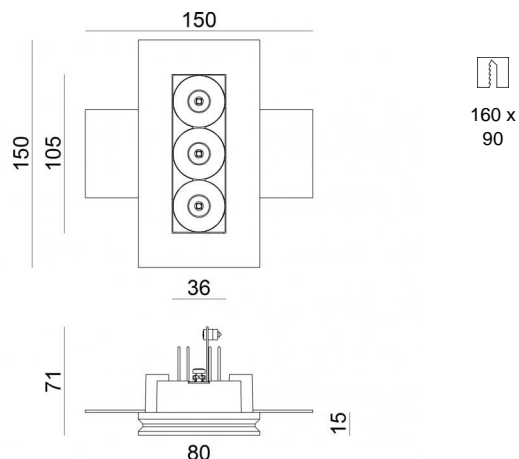
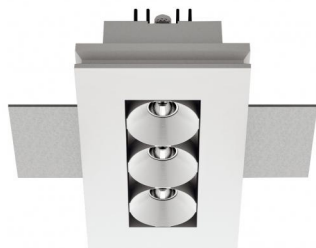


# Gypsum Cell



Downlights | x powerLEDs 0 W DC 630 mA | CRI 90  
64547M45



## Technical data

Type	Encasement without flange
Installation position	Ceiling
Installation environment	Indoor
Light Source	LED
Circuit structure	powerLEDs
Optics	Medium Wide Flood
Light emission direction	downward
Nominal power	0 W DC
Input voltage range	630mA
CCT / Tone	2700 K
Colour rendering index	90 Ra
C.C. / C.V.	CC
Safety class	3
IP	IP20
Glow wire test	850°
Direct mounting on normally flammable surfaces	Yes
CE	Yes
Driver included	No
Dimmable article	DALI - 1-10V
Directional	No
Tilting	No
Walk-over	No
Drive-over	No
Cable included	Yes
Cable length	0.170 m
Resin potting	No
Type of light emission	Single emission
Net weight	0.500 Kg
Electrostatic discharge protection	No
Surge protection	No
Product technological characteristics	TVS

## Finishing casing

Material	plaster
Colour	white


## Finishing diffuser


Material	ABS
Colour	White


## Finishing radiator

Material	Aluminium 6060
Colour	Anodised Black
Processing	15 µm Anodizing

## Electronics

 99105  
On/Off Driver 198~264V AC

 99376  
On/Off Driver 198~264V AC

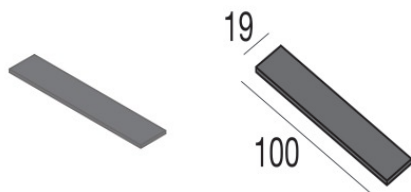
 C-E100001  
Push and Simply Dim - DALI-2 Multi Power 198~264V AC / 180~275V DC

## Cables Electrification

Cable connector	No
-----------------	----



Gypsum Cell | Downlights | Accessories  
**64547M45**



Spacer - KIT thicknesses for installation on plasterboard

**Code**

60830