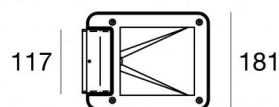
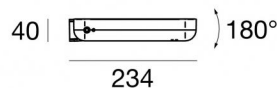




Projectors | 100-264 V AC /176-264 V DC
1 arrayLED 13.5 W DC - 16 W AC | CRI 80
64523N07



Technical data	
Type	Surface - -
Installation position	Wall lights - Floor
Installation environment	Outdoor
Light Source	LED
Circuit structure	arrayLED
Optics	Asymmetric Wallwasher
Light emission direction	frontal
Nominal power	13.5 W DC
Total Power	16 W
Source lumens	1794 lm
Nominal input voltage	220 - 240 V AC
Input voltage range	100 - 264 V AC
Frequency	50 - 60 Hz
CCT / Tone	4000 K
Colour rendering index	80 Ra
C.C. / C.V.	AC
Safety class	2
IP	IP65
IK	IK09
Glow wire test	850°
Direct mounting on normally flammable surfaces	Yes
CE	Yes
Driver included	Driver
Dimmable article	No
Directional	Swivelling
total angle (vertical plane)	180 °
Tilting	No
Walk-over	No
Drive-over	No
Cable included	No
Resin potting	Yes
Type of light emission	Single emission
Net weight	2 Kg
Electrostatic discharge protection	Yes
Surge protection	0.5 KV
Product technological characteristics	Acquastop - TCS

Finishing casing	
Material	Die-cast Aluminium EN AB - 46100
Colour	grey RAL 7021
Processing	Open pore anodizing + Powder Coating
Finishing diffuser	
Material	Extra clear glass - Tempered
Colour	transparent
Processing	Silk-screening

The driver contained in the device complies with IEC 61347-2-13 annex J, and can therefore be powered by centralized power systems.



Projectors | 100-264 V AC /176-264 V DC | 1 arrayLED 13.5 W DC - 16 W AC | CRI 80 |

Base

64523N07

Single emission projectors or for outdoor application. The natural white LED light source with a asymmetric wallwasher light distribution is composed of 1 arrayed LEDs with CCT of 4000 K and a CRI 80; the source luminous flux is 1794 lm, with a 132.9 lm/W nominal luminous efficacy.

The device body is made of die-cast aluminium en ab - 46100 and features a grey ral 7021 finish, processed by means of open pore anodizing + powder coating; the diffuser is made of extra clear glass - tempered with a silk-screening treatment. The ingress protection degree is IP65; the total weight is of 2 kg.

The total absorbed power is 16 W.

The device features protection class II and can be wall lights or floor-mounted.

Compliant with the EN 60598-1 standard and its specific provisions.

Energy efficiency class

This product contains a light source of energy efficiency class E.

Illuminotechnical Features

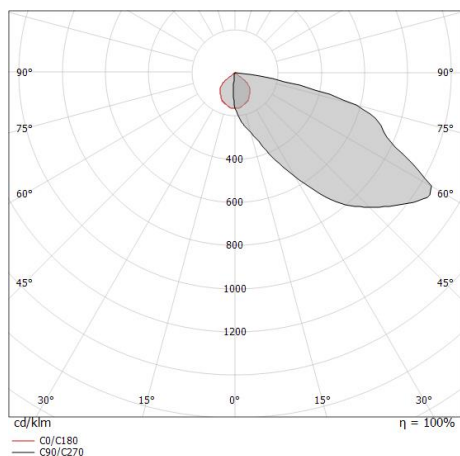
Light Output Ratio (LOR)	55 %
Source lumens	1794 lm
Delivered lumens	995 lm
Consumption	16 W
Luminaire efficacy	62 lm/W
Colour temperature	4000 K
Standard Deviation of Colour Matching	2 Step MacAdam
Colour rendering index	80 Ra
Standard Operating Ambient Temperature	-20 / +50°C
Ordinary temperature on the glass	40°C

LED Life / Failure Ratio

L70 B10 C0 252000h (at Tj 65 Ta 25)

OPTICAL

C0/C180 optics	96°
Light distribution simmetry	Asymmetrical





Picket
 installation position: land,Cover material: pc

Code
14931



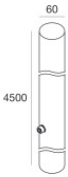
Bracket
 installation position: wall lights L=117mm, H=40mm, D=80mm.
 Material:AISI 304 steel, colour:grey RAL 7021, processing:Powder coating.

Code
64539



Bracket
 L=117mm, H=40mm, D=68,5mm.
 Material:Aluminium 6026, colour:grey RAL 7021, processing:Open pore anodizing + Powder Coating.

Code
64533



Pole

Code
64537