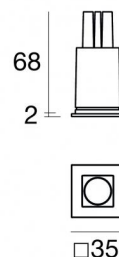




Downlights | 1 x powerLED 3 W DC 1000 mA | CRI 90
C01241BBBMW



30

| Technische Daten | |
|---|-------------------|
| Installationsposition | Decke |
| Installationsumgebung | Indoor |
| Lichtquelle | LED |
| Circuit structure | powerLED |
| Optik | Medium Wide Flood |
| Light emission direction | downward |
| Lampe Nennleistung | 3 W DC |
| Lichtstrom (Lichtquelle) | 402 lm |
| Eingangsspannungsbereich | 1000mA |
| Ähnlichste Farbtemperatur / Tone | 3000 K |
| Farbwiedergabeindex | 90 Ra |
| Gleichstrom/Gleichspannung | CC |
| Isolierklasse | 3 |
| IP | IP44 |
| IP optisches System | IP65 |
| Glühdrahtprüfung | 850° |
| Direkte Montage auf normal entflammaren Oberflächen | Ja |
| CE | Ja |
| Einschließlich Driver | Nein |
| Leuchte dimmbar | DALI - 1-10V |
| Schwenkbarkeit | Nein |
| Drehbarkeit | Nein |
| Begehbarkeit | Nein |
| Überrollbarkeit | Nein |
| Einschließlich Kabel | Ja |
| Kabellänge | 0.170 m |
| Harzbeschichtung | Nein |
| Typ Lichtabstrahlung | Einflammig |
| Nettogewicht | 0.047 Kg |
| Schutz vor elektrostatischen Entladungen | Nein |
| Schutz vor Stoßspannungen | Nein |
| Optiktechnologie | F.O.L. |
| Technische Merkmale des Produkts | TVS |

Oberfläche Gehäuse

| | |
|-----------------|--|
| Material | Stranggepresstes Aluminium EN AB - 46100 |
| Farbe | Schwarz |
| Bearbeitungstyp | Pulverbeschichtung |

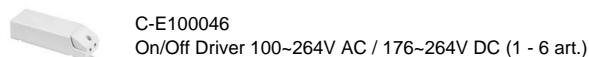
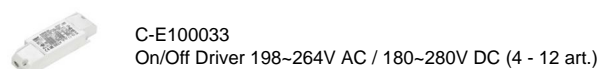
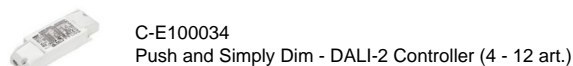
Oberfläche Diffusor

| | |
|----------|----------------------------|
| Material | Polycarbonat UV-beständige |
| Farbe | transparent |

Oberfläche strahler

| | |
|-----------------|--|
| Material | Stranggepresstes Aluminium EN AB - 46100 |
| Bearbeitungstyp | Trommelung |

Elektronik



Cables Electrification

| | |
|-----------------|----|
| Cable connector | No |
|-----------------|----|

Downlights | 1 x powerLED 3 W DC 1000 mA | CRI 90 C01241BBWMW

Single emission recessed downlights for indoor application. The warm white LED light source is composed of 1 powerLED LEDs with CCT of 3000 K and a CRI 90; the source luminous flux is 402 lm, with a 134.0 lm/W nominal luminous efficacy.

The device body is made of die-cast aluminium en ab - 46100 and features a black finish, processed by means of powder coating; the diffuser is made of uv resistant polycarbonate. The ingress protection degree is IP44; the total weight is of 0.047 kg. The power supply driver is not provided and is to be ordered separately.

The total absorbed power is 3 W. The power supply cable is included and features a 0.170 m length.

The device features protection class III and can be ceiling-mounted, with a 30 mm diameter hole (in plasterboard).

Compliant with the EN 60598-1 standard and its specific provisions.

Energieeffizienzklasse

ieses Produkt enthält eine Lichtquelle der Energieeffizienzklasse F.

Illuminotechnical Eigenschaften

| | |
|---------------------------------------|----------------|
| Light Output Ratio (LOR) | 38 % |
| Lichtstrom (Lichtquelle) | 402 lm |
| Leuchten Lichtstrom | 154 lm |
| Consumption | 2,0 W |
| Leuchten Lichtausbeute | 77 lm/W |
| Farbtemperatur | 3000 K |
| Standard Deviation of Colour Matching | 3 Step MacAdam |
| Farbwiedergabeindex | 90 Ra |

| | |
|-----------------------------|-------------|
| Standardumgebungstemperatur | -20 / +50°C |
| Typische Temperatur am Glas | 40°C |

LED Life / Failure Ratio

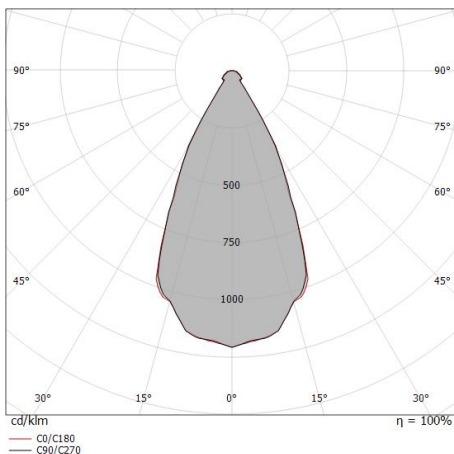
L70 B20 C0 214455h (at Tj 60 Ta 25)

UGR

| | |
|-------------------|----------|
| UGR axial | 25.8 |
| UGR transversal | 25.8 |
| X=4H Y=8H | S=0.25H |
| Reflection factor | 70/50/20 |

OPTICAL

| | |
|-----------------------------|-------------|
| Optik C0/C180 | 50° |
| Light distribution simmetry | Symmetrical |



| Distance [m] | Cone diameter [m] | Beam Type | Half-peak divergence | E(0°) | E(C90) | E(C0) | Illuminance [lx] |
|--------------|-------------------|-----------|----------------------|-------|--------|-------|------------------|
| 0.5 | 0.47 0.46 | C0/C180 | 49.6° | 743 | 278 | 279 | |
| 1.0 | 0.93 0.92 | C0/C180 | 49.6° | 186 | 70 | 70 | |
| 1.5 | 1.40 1.39 | C0/C180 | 49.6° | 83 | 31 | 31 | |
| 2.0 | 1.87 1.85 | C0/C180 | 49.6° | 46 | 17 | 17 | |
| 2.5 | 2.33 2.31 | C0/C180 | 49.6° | 30 | 11 | 11 | |
| 3.0 | 2.80 2.77 | C0/C180 | 49.6° | 21 | 8 | 8 | |