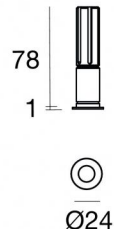




Downlights | 1 x powerLED 3 W DC 1000 mA | CRI 90  
**C01038BBMSP**



20



| Technische Daten                                    |              |
|---|--------------|
| Installationsposition                               | Decke        |
| Installationsumgebung                               | Indoor       |
| Lichtquelle   | LED          |
| Circuit structure                                   | powerLED     |
| Optik   | Spot         |
| Light emission direction                            | downward     |
| Lampe Nennleistung                                  | 3 W DC       |
| Lichtstrom (Lichtquelle)                            | 358 lm       |
| Eingangsspannungsbereich                            | 1000mA       |
| Ähnlichste Farbtemperatur / Tone                    | 2700 K       |
| Farbwiedergabeindex                                 | 90 Ra        |
| Gleichstrom/Gleichspannung                          | CC           |
| Isolierklasse                                       | 3            |
| IP  | IP44         |
| IP optisches System                                 | IP65         |
| Glühdrahtprüfung                                    | 850°         |
| Direkte Montage auf normal entflammaren Oberflächen | Ja           |
| CE  | Ja           |
| Einschließlich Driver                               | Nein         |
| Leuchte dimmbar                                     | DALI - 1-10V |
| Schwenkbarkeit                                      | Nein         |
| Drehbarkeit   | Nein         |
| Begehbarkeit  | Nein         |
| Überrollbarkeit                                     | Nein         |
| Einschließlich Kabel                                | Ja           |
| Kabellänge  | 0.170 m      |
| Harzbeschichtung                                    | Nein         |
| Typ Lichtabstrahlung                                | Einflammig   |
| Nettogewicht  | 0.047 Kg     |
| Schutz vor elektrostatischen Entladungen            | Nein         |
| Schutz vor Stoßspannungen                           | Nein         |
| Optiktechnologie                                    | F.O.L.       |
| Technische Merkmale des Produkts                    | TVS          |

### Oberfläche Gehäuse

|                 |                    |
|-----------------|--------------------|
| Material        | Aluminium 6026     |
| Farbe           | Schwarz            |
| Bearbeitungstyp | Pulverbeschichtung |

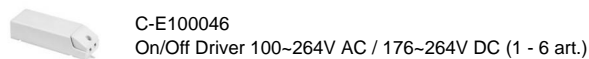
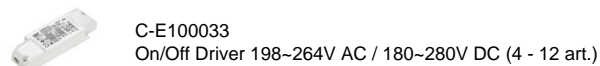
### Oberfläche Diffusor

|          |                            |
|----------|----------------------------|
| Material | Polycarbonat UV-beständige |
| Farbe    | transparent                |

### Oberfläche strahler

|                 |                      |
|-----------------|----------------------|
| Material        | Aluminium 6026       |
| Farbe           | Eloxiertes Aluminium |
| Bearbeitungstyp | Anodisierung 20 µm   |

### Elektronik



### Cables Electrification

|                 |    |
|-----------------|----|
| Cable connector | No |
|-----------------|----|



Downlights | 1 x powerLED 3 W DC 1000 mA | CRI 90  
**C01038BBMSP**

Single emission recessed downlights for indoor application. The super warm white LED light source with a spot light distribution is composed of 1 powerLED LEDs with CCT of 2700 K and a CRI 90; the source luminous flux is 358 lm, with a 119.3 lm/W nominal luminous efficacy.

The device body is made of aluminium 6026 and features a black finish, processed by means of powder coating; the diffuser is made of uv resistant polycarbonate. The ingress protection degree is IP44; the total weight is of 0.047 kg. The power supply driver is not provided and is to be ordered separately.

The total absorbed power is 3 W. The power supply cable is included and features a 0.170 m length.

The device features protection class III and can be ceiling-mounted, with a 20 mm diameter hole (in plasterboard).

Compliant with the EN 60598-1 standard and its specific provisions.

### Energieeffizienzklasse

ieses Produkt enthält eine Lichtquelle der Energieeffizienzklasse F.

### Illuminotechnical Eigenschaften

|                                       |                |
|---------------------------------------|----------------|
| Light Output Ratio (LOR)              | 24 %           |
| Lichtstrom (Lichtquelle)              | 358 lm         |
| Leuchten Lichtstrom                   | 89 lm          |
| Consumption                           | 3 W            |
| Leuchten Lichtausbeute                | 29 lm/W        |
| Farbtemperatur                        | 2700 K         |
| Standard Deviation of Colour Matching | 3 Step MacAdam |
| Farbwiedergabeindex                   | 90 Ra          |

|                             |             |
|-----------------------------|-------------|
| Standardumgebungstemperatur | -20 / +50°C |
| Typische Temperatur am Glas | 40°C        |

### LED Life / Failure Ratio

L70 B20 C0 214455h (at Tj 60 Ta 25 )

### UGR

|                   |          |
|-------------------|----------|
| UGR axial         | 16       |
| UGR transversal   | 15.7     |
| X=4H   Y=8H       | S=0.25H  |
| Reflection factor | 70/50/20 |

### OPTICAL

|                             |             |
|-----------------------------|-------------|
| Optik C0/C180               | 19°         |
| Light distribution simmetry | Symmetrical |

