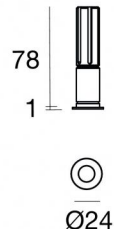




Downlights | 1 x powerLED 3 W DC 1000 mA | CRI 90
C01038AUMFL



Technische Daten	
Installationsposition	Decke
Installationsumgebung	Indoor
Lichtquelle	LED
Circuit structure	powerLED
Optik	Flood
Light emission direction	downward
Lampe Nennleistung	3 W DC
Lichtstrom (Lichtquelle)	358 lm
Eingangsspannungsbereich	1000mA
Ähnlichste Farbtemperatur / Tone	2700 K
Farbwiedergabeindex	90 Ra
Gleichstrom/Gleichspannung	CC
Isolierklasse	3
IP	IP44
IP optisches System	IP65
Glühdrahtprüfung	850°
Direkte Montage auf normal entflammaren Oberflächen	Ja
CE	Ja
Einschließlich Driver	Nein
Leuchte dimmbar	DALI - 1-10V
Schwenkbarkeit	Nein
Drehbarkeit	Nein
Begehbarkeit	Nein
Überrollbarkeit	Nein
Einschließlich Kabel	Ja
Kabellänge	0.170 m
Harzbeschichtung	Nein
Typ Lichtabstrahlung	Einflammig
Nettogewicht	0.047 Kg
Schutz vor elektrostatischen Entladungen	Nein
Schutz vor Stoßspannungen	Nein
Technische Merkmale des Produkts	TVS

Oberfläche Gehäuse

Material	Aluminium 6026
Farbe	Gold
Bearbeitungstyp	Pulverbeschichtung

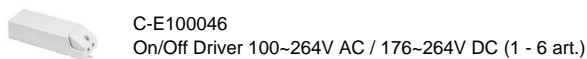
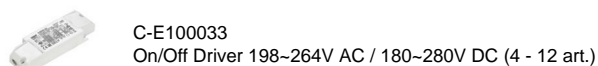
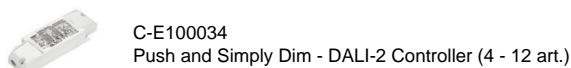
Oberfläche Diffusor

Material	Polycarbonat UV-beständige
Farbe	transparent

Oberfläche strahler

Material	Aluminium 6026
Farbe	Eloxiertes Aluminium
Bearbeitungstyp	Anodisierung 20 µm

Elektronik



Cables Electrification

Cable connector	No
-----------------	----



Downlights | 1 x powerLED 3 W DC 1000 mA | CRI 90
C01038AUMFL

Single emission recessed downlights for indoor application. The super warm white LED light source with a flood light distribution is composed of 1 powerLED LEDs with CCT of 2700 K and a CRI 90; the source luminous flux is 358 lm, with a 119.3 lm/W nominal luminous efficacy.

The device body is made of aluminium 6026 and features a gold finish, processed by means of powder coating; the diffuser is made of uv resistant polycarbonate. The ingress protection degree is IP44; the total weight is of 0.047 kg. The power supply driver is not provided and is to be ordered separately.

The total absorbed power is 3 W. The power supply cable is included and features a 0.170 m length.

The device features protection class III and can be ceiling-mounted, with a 20 mm diameter hole (in plasterboard).

Compliant with the EN 60598-1 standard and its specific provisions.

Energieeffizienzklasse

ieses Produkt enthält eine Lichtquelle der Energieeffizienzklasse F.

Illuminotechnical Eigenschaften

Light Output Ratio (LOR)	31 %
Lichtstrom (Lichtquelle)	358 lm
Leuchten Lichtstrom	113 lm
Consumption	3 W
Leuchten Lichtausbeute	37 lm/W
Farbtemperatur	2700 K
Standard Deviation of Colour Matching	3 Step MacAdam
Farbwiedergabeindex	90 Ra

Standardumgebungstemperatur	-20 / +50°C
Typische Temperatur am Glas	40°C

LED Life / Failure Ratio

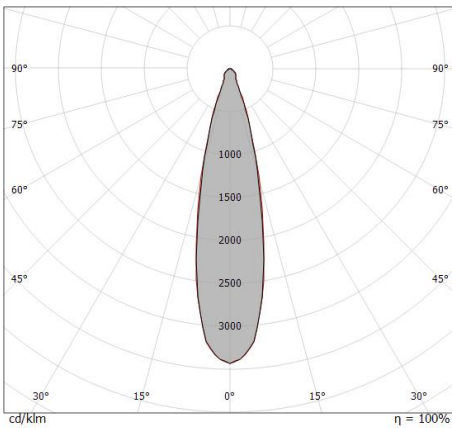
L70 B20 C0 214455h (at Tj 60 Ta 25)

UGR

UGR axial	27.3
UGR transversal	27.2
X=4H Y=8H	S=0.25H
Reflection factor	70/50/20

OPTICAL

Optik C0/C180	25°
Light distribution simmetry	Symmetrical



Distance [m]	Cone diameter [m]	illuminance [lx]
0.5	0.22 0.23	E(0°) 1550 E(C90) 722 E(C0) 721
1.0	0.44 0.45	E(0°) 388 E(C90) 181 E(C0) 180
1.5	0.66 0.68	E(0°) 172 E(C90) 86 E(C0) 80
2.0	0.88 0.90	E(0°) 97 E(C90) 45 E(C0) 45
2.5	1.10 1.13	E(0°) 62 E(C90) 29 E(C0) 29
3.0	1.32 1.35	E(0°) 43 E(C90) 20 E(C0) 20

— C0/C180 (Half-peak divergence: 25.4°)
 — C90/C270 (Half-peak divergence: 24.8°)