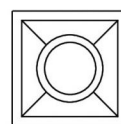
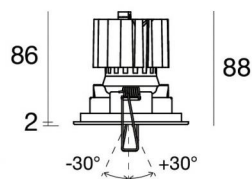
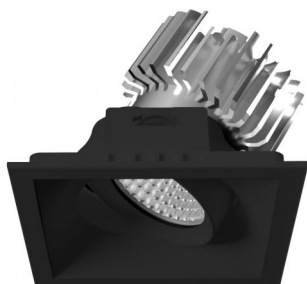




Downlights | 1 arrayLED 11 W DC 300 mA | CRI 90
C00184BBMSP



□ 90

Technische Daten

Installationsposition	Decke
Installationsumgebung	Indoor
Lichtquelle	LED
Circuit structure	arrayLED
Optik	Spot
Light emission direction	downward
Lampe Nennleistung	11 W DC
Lichtstrom (Lichtquelle)	1487 lm
Eingangsspannungsbereich	300mA
Ähnlichste Farbtemperatur / Tone	2700 K
Farbwiedergabeindex	90 Ra
Gleichstrom/Gleichspannung	CC
Isolierklasse	3
IP	IP44
IP optisches System	IP65
IK	IK05
Glühdrahtprüfung	850°
Direkte Montage auf normal entflammaren Oberflächen	Ja
CE	Ja
Einschließlich Driver	Nein
Leuchte dimmbar	DALI - 1-10V
Schwenkbarkeit	Nein
Drehbarkeit	Ja
Gesamtwinkel (vertikale Ebene)	60 °
Begehbarkeit	Nein
Überrollbarkeit	Nein
Einschließlich Kabel	Ja
Kabellänge	0.15 m
Harzbeschichtung	Nein
Typ Lichtabstrahlung	Einflammig
Nettogewicht	0.3 Kg
Schutz vor elektrostatischen Entladungen	Nein
Schutz vor Stoßspannungen	Nein

Oberfläche Gehäuse

Material	Polycarbonat UV-beständige
Farbe	Schwarz
Bearbeitungstyp	Flüssiglackierung

Oberfläche Diffusor


Material	Polycarbonat UV-beständige
Farbe	transparent

Oberfläche strahler

Material	Stranggepresstes Aluminium EN AB - 46100
Bearbeitungstyp	Trommelung

Elektronik

 99734
 Multi Power 198~264V AC / 180~275V DC (1 art.)

 99732
 1-10V Multi Power 198~264V AC / 180~275V DC (1 art.)

 83322
 Push and Simply Dim - DALI-2 Controller (1 art.)



Downlights | 1 arrayLED 11 W DC 300 mA | CRI 90
C00184BBMSP

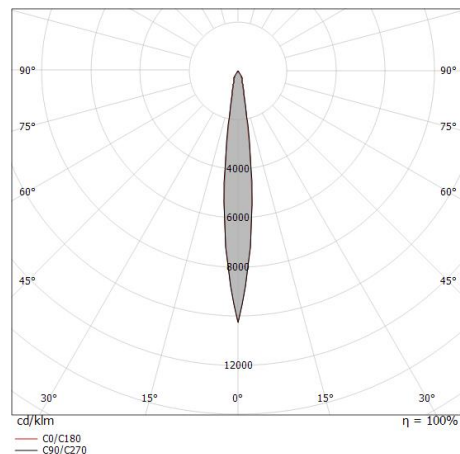
Single emission recessed downlights for indoor application. The super warm white LED light source with a spot light distribution is composed of 1 arrayed LEDs with CCT of 2700 K and a CRI 90; the source luminous flux is 1487 lm, with a 135.2 lm/W nominal luminous efficacy.

The device body is made of uv resistant polycarbonate and features a black finish, processed by means of liquid painting; the diffuser is made of uv resistant polycarbonate. The ingress protection degree is IP44; the total weight is of 0.3 kg. The power supply driver is not provided and is to be ordered separately.

The total absorbed power is 11 W. The power supply cable is included and features a 0.15 m length.

The device features protection class III and can be ceiling-mounted, with a 81 x 81 mm hole (in plasterboard).

Compliant with the EN 60598-1 standard and its specific provisions.



Distance [m]	Cone diameter [m]	illuminance [lx]
0.5	0.11 0.11	E(0°) 35666 E(C90) 6.3° 17714 E(C0) 6.2° 17731
1.0	0.22 0.22	E(0°) 8917 E(C90) 6.3° 4429 E(C0) 6.2° 4433
1.5	0.33 0.33	E(0°) 3963 E(C90) 6.3° 1968 E(C0) 6.2° 1970
2.0	0.44 0.43	E(0°) 2229 E(C90) 6.3° 1107 E(C0) 6.2° 1108
2.5	0.55 0.54	E(0°) 1427 E(C90) 6.3° 709 E(C0) 6.2° 709
3.0	0.66 0.65	E(0°) 991 E(C90) 6.3° 492 E(C0) 6.2° 493

— C0/C180 (Half-peak divergence: 12.4°)
 — C90/C270 (Half-peak divergence: 12.6°)

Energieeffizienzklasse

ieses Produkt enthält eine Lichtquelle der Energieeffizienzklasse E.

Illuminotechnical Eigenschaften

Light Output Ratio (LOR)	58 %
Lichtstrom (Lichtquelle)	1487 lm
Leuchten Lichtstrom	870 lm
Consumption	11 W
Leuchten Lichtausbeute	79 lm/W
Farbtemperatur	2700 K
Standard Deviation of Colour Matching	2 Step MacAdam
Farbwiedergabeindex	90 Ra
Colour Rendering Index	60 R9
Black Body Locus	On
Standardumgebungstemperatur	-20 / +50°C
Typische Temperatur am Glas	40°C

LED Life / Failure Ratio

L70 B10 C0 252000h (at Tj 65 Ta 25)

UGR

UGR axial	13.8
UGR transversal	13.8
X=4H Y=8H	S=0.25H
Reflection factor	70/50/20

OPTICAL

Optik C0/C180	12°
Light distribution simmetry	Symmetrical

COLOR VECTOR GRAPHIC

