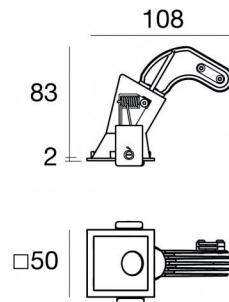
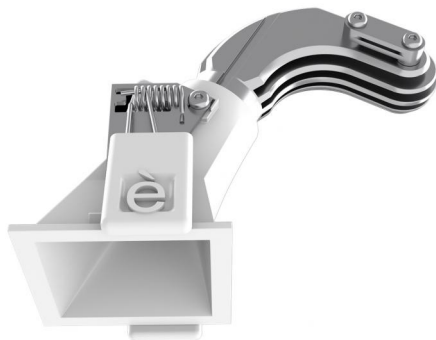




Downlights | 1 x powerLED 4 W DC 350 mA | CRI 90
90842W60



46

| Technische Daten | |
|-----------------------------------------------------|---------------------|
| Installationsposition | Decke |
| Installationsumgebung | Indoor |
| Lichtquelle | LED |
| Circuit structure | powerLED |
| Optik | Medium Wide Flood |
| Light emission direction | downward |
| Lampe Nennleistung | 4 W DC |
| Lichtstrom (Lichtquelle) | 416 lm |
| Eingangsspannungsbereich | 350mA |
| Ähnlichste Farbtemperatur / Tone | 3000 K |
| Farbwiedergabeindex | 90 Ra |
| Gleichstrom/Gleichspannung | CC |
| Isolierklasse | 3 |
| IP | IP44 |
| IP optisches System | IP65 |
| Glühdrahtprüfung | 850° |
| Direkte Montage auf normal entflammaren Oberflächen | Ja |
| CE | Ja |
| Einschließlich Driver | Nein |
| Leuchte dimmbar | DALI - 1-10V |
| Schwenkbarkeit | Nein |
| Drehbarkeit | Nein |
| Begehbarkeit | Nein |
| Überrollbarkeit | Nein |
| Einschließlich Kabel | Ja |
| Kabellänge | 0.170 m |
| Harzbeschichtung | Nein |
| Typ Lichtabstrahlung | Einflammig |
| Nettogewicht | 0.078 Kg |
| Schutz vor elektrostatischen Entladungen | Nein |
| Schutz vor Stoßspannungen | Nein |
| Optiktechnologie | F.O.L. - Honey comb |
| Technische Merkmale des Produkts | TVS |

Oberfläche Gehäuse

| | |
|-----------------|------------------------------------------|
| Material | Stranggepresstes Aluminium EN AB - 46100 |
| Farbe | Weiß |
| Bearbeitungstyp | Pulverbeschichtung |


Oberfläche Diffusor

| | |
|----------|----------------------------|
| Material | Polycarbonat UV-beständige |
| Farbe | transparent |


Oberfläche strahler

| | |
|-----------------|------------------------------------------|
| Material | Stranggepresstes Aluminium EN AB - 46100 |
| Farbe | Aluminium |
| Bearbeitungstyp | Polieren |

Elektronik

 89145
On/Off Driver 198-264V AC / 180-275V DC (1 art.)

 99375
On/Off Driver 198-264V AC (2 - 3 art.)

 C-E100010
1-10V - 0-10V Controller (1 art.)

 C-E100011
Push and Simply Dim - DALI-2 Controller (1 art.)

Cables Electrification

Cable connector No

Downlights | 1 x powerLED 4 W DC 350 mA | CRI 90
90842W60

Single emission recessed downlights for indoor application. The warm white LED light source with a medium wide flood light distribution is composed of 1 powerLED LEDs with CCT of 3000 K and a CRI 90; the source luminous flux is 416 lm, with a 104.0 lm/W nominal luminous efficacy.

The device body is made of die-cast aluminium en ab - 46100 and features a white finish, processed by means of powder coating; the diffuser is made of uv resistant polycarbonate. The ingress protection degree is IP44; the total weight is of 0.078 kg. The power supply driver is not provided and is to be ordered separately.

The total absorbed power is 4 W. The power supply cable is included and features a 0.170 m length.

The device features protection class III and can be ceiling-mounted, with a 46 x 46 mm hole (in plasterboard).

Compliant with the EN 60598-1 standard and its specific provisions.

Energieeffizienzklasse

ieses Produkt enthält eine Lichtquelle der Energieeffizienzklasse F.

Illuminotechnical Eigenschaften

| | |
|---------------------------------------|----------------|
| Light Output Ratio (LOR) | 39 % |
| Lichtstrom (Lichtquelle) | 416 lm |
| Leuchten Lichtstrom | 164 lm |
| Consumption | 4 W |
| Leuchten Lichtausbeute | 41 lm/W |
| Farbtemperatur | 3000 K |
| Standard Deviation of Colour Matching | 3 Step MacAdam |
| Farbwiedergabeindex | 90 Ra |
| Black Body Locus | On |

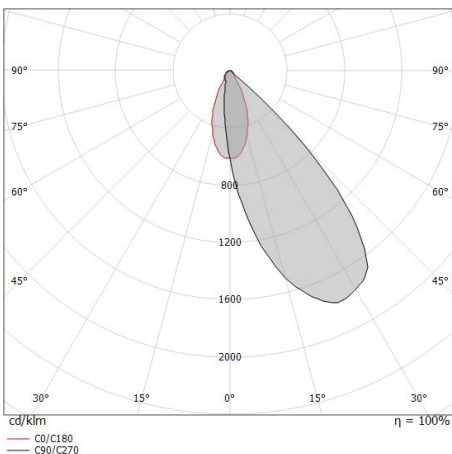
| | |
|-----------------------------|-------------|
| Standardumgebungstemperatur | -20 / +50°C |
| Typische Temperatur am Glas | 40°C |

LED Life / Failure Ratio

L70 B10 C0 247450h (at Tj 60 Ta 25)

OPTICAL

| | |
|-----------------------------|--------------|
| Optik C0/C180 | 46° |
| Light distribution simmetry | Asymmetrical |



| Distance [m] | Cone diameter [m] | Illuminance [lx] |
|--------------|-------------------|------------------------|
| 0.5 | 0.42 | E(0°) 402 E(C0) 158 |
| 1.0 | 0.84 | E(0°) 101 E(C0) 39 |
| 1.5 | 1.26 | E(0°) 45 E(C0) 18 |
| 2.0 | 1.68 | E(0°) 25 E(C0) 10 |
| 2.5 | 2.10 | E(0°) 16 E(C0) 6 |
| 3.0 | 2.52 | E(0°) 11 E(C0) 4 |

Distance [m] Cone diameter [m] Illuminance [lx]
 — C0/C180 (Half-peak divergence: 45.6°)

