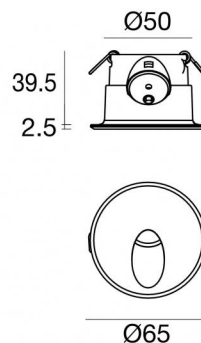




Wandleuchten | 1 x powerLED 2 W DC 630 mA | CRI 80
85542W70



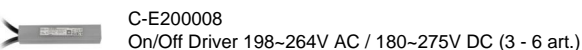
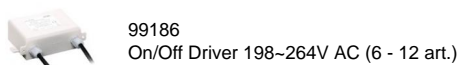
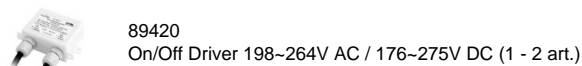
52

Technische Daten	
Installationsposition	Wand
Installationsumgebung	Outdoor
Lichtquelle	LED
Circuit structure	powerLED
Optik	Asymmetric Wallwasher
Light emission direction	downward
Lampe Nennleistung	2 W DC
Lichtstrom (Lichtquelle)	249 lm
Eingangsspannungsbereich	630mA
Ähnlichste Farbtemperatur / Tone	3000 K
Farbwiedergabeindex	80 Ra
Gleichstrom/Gleichspannung	CC
Isolierklasse	3
IP	IP65
IK	IK10
Glühdrahtprüfung	850°
Direkte Montage auf normal entflammaren Oberflächen	Ja
CE	Ja
Einschließlich Driver	Nein
Leuchte dimmbar	DALI - 1-10V
Schwenkbarkeit	Nein
Drehbarkeit	Nein
Begehbarkeit	Nein
Überrollbarkeit	Nein
Einschließlich Kabel	Ja
Kabellänge	1 m
Harzbeschichtung	Ja
Typ Lichtabstrahlung	Einflammig
Nettogewicht	0.13 Kg
Schutz vor elektrostatischen Entladungen	Nein
Schutz vor Stoßspannungen	Nein

Oberfläche Gehäuse

Material	Aluminium
Farbe	Grau
Bearbeitungstyp	Offenporige Anodisierung + Pulverlackierung

Elektronik



Wandleuchten | 1 x powerLED 2 W DC 630 mA | CRI 80 85542W70

Single emission wall lights for outdoor application. The warm white LED light source with a asymmetric wallwasher light distribution is composed of 1 powered LEDs with CCT of 3000 K and a CRI 80; the source luminous flux is 249 lm, with a 124.5 lm/W nominal luminous efficacy.

The device body is made of aluminium and features a grey finish, processed by means of open pore anodizing + powder coating. The ingress protection degree is IP65; the total weight is of 0.13 kg. The power supply driver is not provided and is to be ordered separately.

The total absorbed power is 2 W. The power supply cable is included and features a 1 m length.

The device features protection class III and can be wall lights-mounted, with a 52 mm diameter hole (in plasterboard) with an outer casing, code 84338(for concrete or masonry).

Compliant with the EN 60598-1 standard and its specific provisions.

Energieeffizienzklasse

ieses Produkt enthält eine Lichtquelle der Energieeffizienzklasse D.

Illuminotechnical Eigenschaften

Light Output Ratio (LOR)	43 %
Lichtstrom (Lichtquelle)	249 lm
Leuchten Lichtstrom	109 lm
Consumption	2,0 W
Leuchten Lichtausbeute	54 lm/W
Farbtemperatur	3000 K
Standard Deviation of Colour Matching	1.5 Step
Farbwiedergabeindex	80 Ra

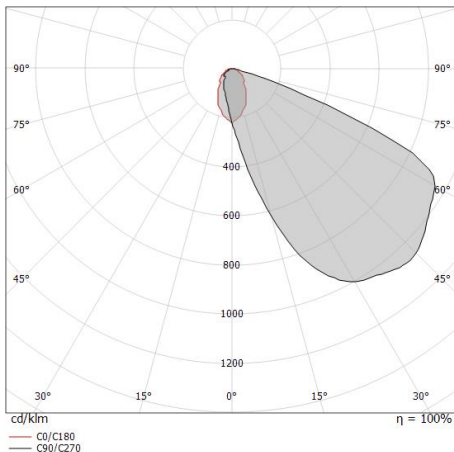
Standardumgebungstemperatur	-20 / +50°C
Typische Temperatur am Glas	40°C

LED Life / Failure Ratio

L70 B10 C0 361980h (at Tj 60 Ta 25)

OPTICAL

Optik C0/C180	62°
Light distribution simmetry	Asymmetrical



Distance [m]	Cone diameter [m]	Illuminance [lx]
0.5	0.61	$\frac{E(0^\circ)}{E(C0)}$ 31.2° 96 30
1.0	1.21	$\frac{E(0^\circ)}{E(C0)}$ 31.2° 24 7
1.5	1.82	$\frac{E(0^\circ)}{E(C0)}$ 31.2° 11 3
2.0	2.42	$\frac{E(0^\circ)}{E(C0)}$ 31.2° 6 2
2.5	3.03	$\frac{E(0^\circ)}{E(C0)}$ 31.2° 4 1
3.0	3.63	$\frac{E(0^\circ)}{E(C0)}$ 31.2° 3 1

Distance [m] Cone diameter [m] Illuminance [lx]
— C0/C180 (Half-peak divergence: 62.4°)



Quara_R | Step Lights | Accessories
85542W70



Einbaugehäuse

installationsposition: wand; typ installation: mauerwerk L=72mm, H=62mm, D=62mm.

Material:Kunststoff ABS, farbe:Schwarz.

Code

84338