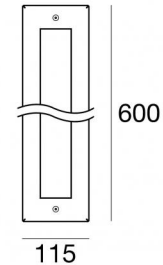
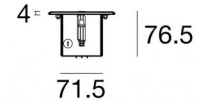


Unterwasserleuchten | 12 x powerLEDs 28 W DC 12 V
CRI 80
84213M25



Technische Daten	
Typ	Frame
Installationsposition	Wand - Boden
Installationsumgebung	Outdoor
Lichtquelle	LED
Circuit structure	powerLEDs
Optik	Oval
Light emission direction	upward
Lampe Nennleistung	28 W DC
Lichtstrom (Lichtquelle)	3192 lm
Ähnlichste Farbtemperatur / Tone	2700 K
Farbwiedergabeindex	80 Ra
Gleichstrom/Gleichspannung	CV
Isolierklasse	3
IP	IP68
Maximale Einbautiefe	25 mm
IK	IK09
Glühdrahtprüfung	850°
Direkte Montage auf normal entflammaren Oberflächen	Ja
CE	Ja
Einschließlich Driver	Nein
Leuchte dimmbar	Nein
Schwenkbarkeit	Nein
Drehbarkeit	Nein
Begehbarkeit	Ja
Überrollbarkeit	2500 Kg
Einschließlich Kabel	Ja
Kabellänge	5 m
Harzbeschichtung	Ja
Typ Lichtabstrahlung	Einflammig
Nettogewicht	6 Kg
Schutz vor elektrostatischen Entladungen	Nein
Schutz vor Stoßspannungen	Nein





Oberfläche Gehäuse

Material	Edelstahl 316
Farbe	Stahl
Bearbeitungstyp	Bürsten

Oberfläche Diffusor

Material	Extra-helles Glas - Gehärtet
Farbe	transparent
Bearbeitungstyp	Siebdruck

Elektronik

	83010 On/Off Driver 90~264V AC / 127~370V DC 60 W (1 - 2 art.)
	83015 DALI Controller 90~305V AC / 127~431V DC 120 W (1 - 4 art.)
	83013 On/Off Driver 180~305V AC / 254~431V DC 120 W (1 - 4 art.)
	83012 DALI Controller 90~305V AC / 127~431V DC 60 W (1 - 2 art.)

Unterwasserleuchten | 12 x powerLEDs 28 W DC 12 V | CRI 80 84213M25

Single emission submerged for outdoor application. The super warm white LED light source with an elliptical light distribution is composed of 12 powered LEDs with CCT of 2700 K and a CRI 80; the source luminous flux is 3192 lm, with a 114.0 lm/W nominal luminous efficacy.

The device body is made of stainless steel and features a steel finish, processed by means of brushing; the diffuser is made of extra clear glass - tempered with a silk-screening treatment. The ingress protection degree is IP68; the total weight is of 6 kg. The power supply driver is not provided and is to be ordered separately.

The total absorbed power is 28 W. The power supply cable is included and features a 5 m length.

The device features protection class III and can be wall lights or floor-mounted with an outer casing, code 83161 (for concrete or masonry).

Compliant with the EN 60598-1 standard and its specific provisions.

Energieeffizienzklasse

Dieses Produkt enthält 2 Lichtquellen der Energieeffizienzklasse D.

Illuminotechnical Eigenschaften

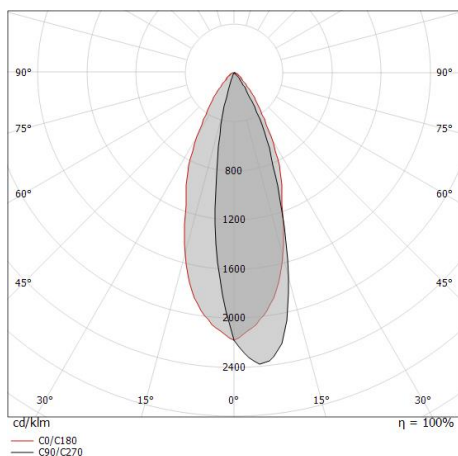
Light Output Ratio (LOR)	53 %
Lichtstrom (Lichtquelle)	3192 lm
Leuchten Lichtstrom	1717 lm
Consumption	26 W
Leuchten Lichtausbeute	66 lm/W
Farbtemperatur	2700 K
Standard Deviation of Colour Matching	1/16 ANSI BIN
Farbwiedergabeindex	80 Ra
Standardumgebungstemperatur	-20 / +50°C
Typische Temperatur am Glas	49°C

LED Life / Failure Ratio

L70 B10 C0 361980h (at Tj 60 Ta 25)

OPTICAL

Optik C0/C180	42°
Light distribution simmetry	Asymmetrical



Distance [m]	Cone diameter [m]	illuminance [lx]
0.5	0.38	E(0°) 14985 E(C0) 6119
1.0	0.77	E(0°) 3746 E(C0) 1530
1.5	1.15	E(0°) 1665 E(C0) 680
2.0	1.54	E(0°) 937 E(C0) 382
2.5	1.92	E(0°) 599 E(C0) 245
3.0	2.30	E(0°) 416 E(C0) 170

— C0/C180 (Half-peak divergence: 42.0°)



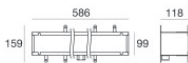
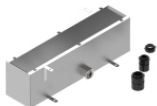
Stecker - 3-Wege-Gelstecker - IP68 Max 3x1,5 mm²

Code
98991



Stecker - 3-Wege-Anschluss - IP68 Min. 3 x 0,5 mm² / Max. 3 x 1,5 mm²

Code
84893



Einbaugehäuse

installationsposition: wand, boden; typ installation: mauerwerk L=586mm, H=118mm, D=159mm.

Material:Stahl AISI 304, farbe:Stahl.

Finish
 **Code**
83161