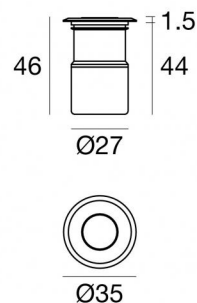
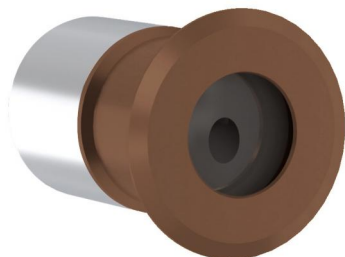




Wandleuchten | 1 x powerLEDs 1.5 W DC 24 V

CRI 90

84076N07



Technische Daten

Typ	1 x powerLEDs 1.5 W DC 24 V
Installationsposition	Boden
Installationsumgebung	Outdoor
Lichtquelle	LED
Circuit structure	powerLEDs
Optik	Asymmetric Wallwasher
Light emission direction	upward
Lampe Nennleistung	1.5 W DC
Lichtstrom (Lichtquelle)	213 lm
Eingangsspannungsbereich	24 V
Ähnlichste Farbtemperatur / Tone	4000 K
Farbwiedergabeindex	90 Ra
Gleichstrom/Gleichspannung	CV
Isolierklasse	3
IP	IP66
IK	IK05
Glühdrahtprüfung	850°
Direkte Montage auf normal entflammaren Oberflächen	Ja
CE	Ja
Einschließlich Driver	Nein
C.V. - C.C. Converter	24 V Konverter enthalten
Leuchte dimmbar	DALI - 1-10V
Schwenkbarkeit	Nein
Drehbarkeit	Nein
Begehbarkeit	Ja
Überrollbarkeit	Nein
Einschließlich Kabel	Ja
Kabellänge	1 m
Harzbeschichtung	Ja
Typ Lichtabstrahlung	Einflammig
Nettogewicht	0.174 Kg
Schutz vor elektrostatischen Entladungen	Nein
Schutz vor Stoßspannungen	Nein
Technische Merkmale des Produkts	TVS

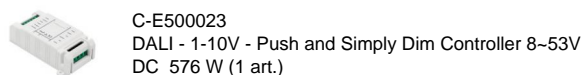
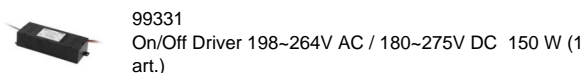
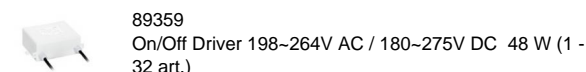
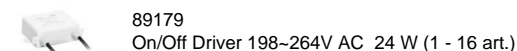
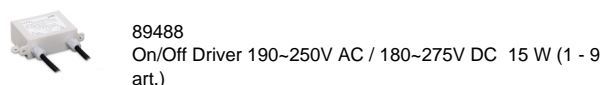
Oberfläche Gehäuse

Material	Messing OT58
Farbe	Dark brown
Bearbeitungstyp	Pulverbeschichtung

Oberfläche sockel

Material	Edelstahl 316
Farbe	Stahl

Elektronik



Cables Electrification

Cable connector	No
-----------------	----



Wandleuchten | 1 x powerLEDs 1.5 W DC 24 V | CRI 90
84076N07

Single emission wall lights for outdoor application. The natural white LED light source with a asymmetric wallwasher light distribution is composed of 1 powered LEDs with CCT of 4000 K and a CRI 90; the source luminous flux is 213 lm, with a 142.0 lm/W nominal luminous efficacy.

The device body is made of ot58 brass and features a dark brown finish, processed by means of powder coating. The ingress protection degree is IP66; the total weight is of 0.174 kg.

The total absorbed power is 1.5 W. The power supply cable is included and features a 1 m length.

The device features protection class III and can be floor-mounted with an outer casing, code 84918(for concrete or masonry).

Compliant with the EN 60598-1 standard and its specific provisions.

Energieeffizienzklasse

ieses Produkt enthält eine Lichtquelle der Energieeffizienzklasse E.

Illuminotechnical Eigenschaften

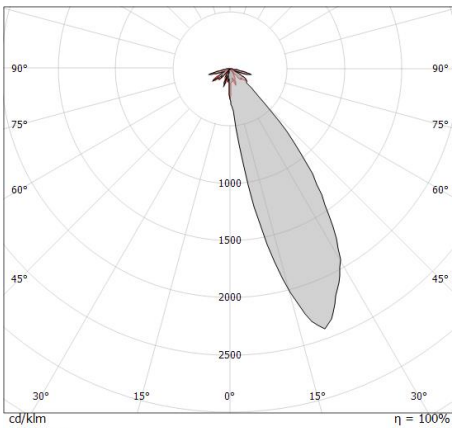
Light Output Ratio (LOR)	4 %
Lichtstrom (Lichtquelle)	213 lm
Leuchten Lichtstrom	9 lm
Consumption	1,5 W
Leuchten Lichtausbeute	9 lm/W
Farbtemperatur	4000 K
Standard Deviation of Colour Matching	3 Step MacAdam
Farbwiedergabeindex	90 Ra
Standardumgebungstemperatur	-20 / +50°C
Typische Temperatur am Glas	40°C

LED Life / Failure Ratio

L70 B20 C0 214455h (at Tj 60 Ta 25)

OPTICAL

Optik C0/C180	154°
Light distribution simmetry	Asymmetrical



Distance [m]	Cone diameter [m]	Illuminance [lx]
0.5	4.40	E(0°) 9 E(C0) 0
1.0	8.80	E(0°) 2 E(C0) 0
1.5	13.20	E(0°) 1 E(C0) 0
2.0	17.61	E(0°) 1 E(C0) 0
2.5	22.01	E(0°) 0 E(C0) 0
3.0	26.41	E(0°) 0 E(C0) 0

Distance [m] Cone diameter [m] Illuminance [lx]

— C0/C180 (Half-peak divergence: 154.4°)



Quara_R | Step Lights | Accessories
84076N07



Einbaugehäuse

installationsposition: boden; typ installation: mauerwerk L=87mm, H=60mm, D=60mm.

Material:Kunststoff ABS, farbe:Schwarz.

Code

84918