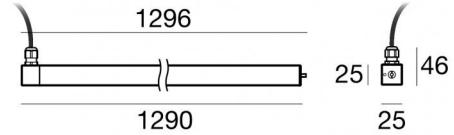
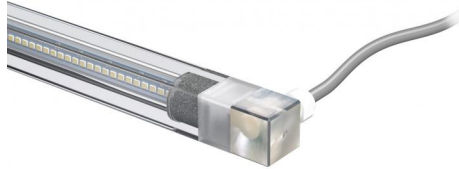




Unterwasserleuchten | 228 topLED 20 W DC 12 V
CRI 80
82652N30



Technische Daten

Typ	Oberfläche
Installationsposition	Wand
Installationsumgebung	Outdoor
Lichtquelle	LED
Circuit structure	topLED
Optik	Extra Wide Flood
Light emission direction	frontal
Lampe Nennleistung	20 W DC
Lichtstrom (Lichtquelle)	3076 lm
Ähnlichste Farbtemperatur / Tone	4000 K
Farbwiedergabeindex	80 Ra
Gleichstrom/Gleichspannung	CV
Isolierklasse	3
IP	IP68
Maximale Einbautiefe	25 m
IK	IK08
Glühdrahtprüfung	850°
Direkte Montage auf normal entflammaren Oberflächen	Ja
CE	Ja
Einschließlich Driver	Nein
Leuchte dimmbar	DALI - 1-10V
Schwenkbarkeit	Orientabile
Gesamtwinkel (vertikale Ebene)	360 °
Drehbarkeit	Nein
Begehbarkeit	Nein
Überrollbarkeit	Nein
Einschließlich Kabel	Ja
Kabellänge	5 m
Harzbeschichtung	Ja
Typ Lichtabstrahlung	Einflammig
Nettogewicht	0.62 Kg
Schutz vor elektrostatischen Entladungen	Nein
Schutz vor Stoßspannungen	Nein
Technische Merkmale des Produkts	Acquastop - UV Resistant





Oberfläche Gehäuse

Material	Stahl AISI 316L
Farbe	Stahl

Oberfläche Diffusor

Material	Polycarbonat UV-beständige
Farbe	transparent

Elektronik

- 
83010
On/Off Driver 90~264V AC / 127~370V DC 60 W (1 - 3 art.)
- 
83015
DALI Controller 90~305V AC / 127~431V DC 120 W (1 - 6 art.)
- 
83013
On/Off Driver 180~305V AC / 254~431V DC 120 W (1 - 6 art.)
- 
83012
DALI Controller 90~305V AC / 127~431V DC 60 W (1 - 3 art.)

Cables Electrification

Cable connector	No
-----------------	----



Unterwasserleuchten | 228 topLED 20 W DC 12 V | CRI 80 82652N30

Single emission submerged for outdoor application. The natural white LED light source with a extra wide flood light distribution is composed of 228 topLEDs with CCT of 4000 K and a CRI 80; the source luminous flux is 3076 lm, with a 153.8 lm/W nominal luminous efficacy.

The device body is made of aisi 316l steel and features a steel finish; the diffuser is made of uv resistant polycarbonate. The ingress protection degree is IP68; the total weight is of 0.62 kg. The power supply driver is not provided and is to be ordered separately.

The total absorbed power is 20 W. The power supply cable is included and features a 5 m length.

The device features protection class III and can be wall lights-mounted with an outer casing, code 83023(for concrete or masonry).

Compliant with the EN 60598-1 standard and its specific provisions.

Energieeffizienzklasse

Dieses Produkt enthält 4 Lichtquellen der Energieeffizienzklasse D.

Illuminotechnical Eigenschaften

Light Output Ratio (LOR)	84 %
Lichtstrom (Lichtquelle)	3076 lm
Leuchten Lichtstrom	2600 lm
Consumption	20 W
Leuchten Lichtausbeute	130 lm/W
Farbtemperatur	4000 K
Standard Deviation of Colour Matching	3 Step MacAdam
Farbwiedergabeindex	80 Ra
Standardumgebungstemperatur	-40 / +50°C
Typische Temperatur am Glas	40°C

LED Life / Failure Ratio

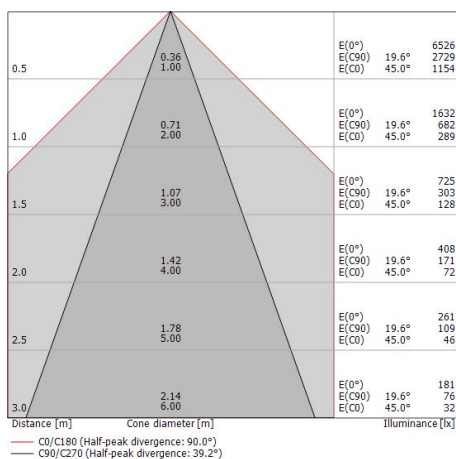
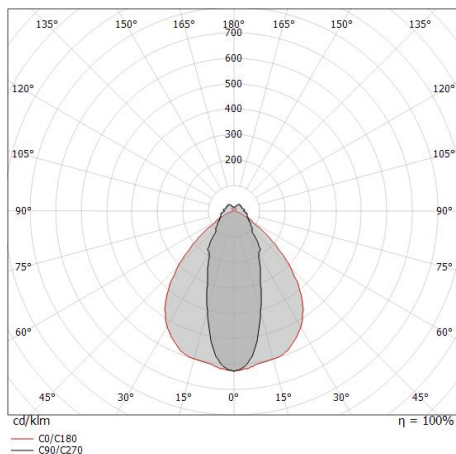
L70 B10 C0 145770h (at Tj 65 Ta 25)

UGR

UGR axial	25.8
UGR transversal	22.3
X=4H Y=8H	S=0.25H
Reflection factor	70/50/20

OPTICAL

Optik C90/C270	39°
Optik C0/C180	90°
Light distribution simmetry	Symmetrical 2 assis





MK68_Q | Submerged | Accessories
82652N30



Stecker - 3-Wege-Gelstecker - IP68 Max 3x1,5 mm²

Code
98991



Stecker - 3-Wege-Anschluss - IP68 Min. 3 x 0,5 mm² / Max. 3 x 1,5 mm²

Code
84893



Stecker

Code
89548

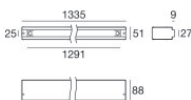


Klammer

installationsposition: wand, decke, boden L=101.5mm, H=45mm, D=41.5mm.

Material:Stahl AISI 316, farbe:Stahl.

Finish
 **Code**
83020



Einbaugehäuse

installationsposition: boden; typ installation: mauerwerk L=1335mm, H=88mm, D=51mm.

Material:Stahl AISI 316, farbe:Stahl.

Finish
 **Code**
83023