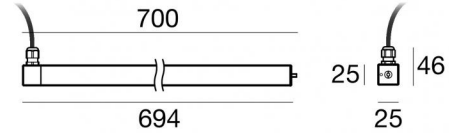
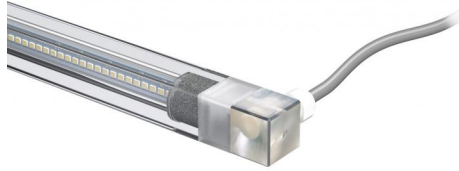


MK68_Q



Unterwasserleuchten | 114 topLED 11 W DC 12 V
CRI 80
82650C36



Technische Daten	
Typ	Oberfläche
Installationsposition	Wand
Installationsumgebung	Outdoor
Lichtquelle	LED
Circuit structure	topLED
Optik	General Lighting
Light emission direction	frontal
Lampe Nennleistung	11 W DC
Lichtstrom (Lichtquelle)	1538 lm
Ähnlichste Farbtemperatur / Tone	6000 K
Farbwiedergabeindex	80 Ra
Gleichstrom/Gleichspannung	CV
Isolierklasse	3
IP	IP68
Maximale Einbautiefe	25 m
IK	IK08
Glühdrahtprüfung	850°
Direkte Montage auf normal entflammaren Oberflächen	Ja
CE	Ja
Einschließlich Driver	Nein
Leuchte dimmbar	DALI - 1-10V
Schwenkbarkeit	Orientabile
Gesamtwinkel (vertikale Ebene)	360 °
Drehbarkeit	Nein
Begehbarkeit	Nein
Überrollbarkeit	Nein
Einschließlich Kabel	Ja
Kabellänge	5 m
Harzbeschichtung	Ja
Typ Lichtabstrahlung	Einflammig
Nettogewicht	0.40 Kg
Schutz vor elektrostatischen Entladungen	Nein
Schutz vor Stoßspannungen	Nein
Technische Merkmale des Produkts	Acquastop - UV Resistant


Oberfläche Gehäuse


Material	Stahl AISI 316L
Farbe	Stahl


Oberfläche Diffusor


Material	Polycarbonat UV-beständige
Farbe	transparent

Elektronik

	83010 On/Off Driver 90~264V AC / 127~370V DC 60 W (1 - 5 art.)
---	---

	83015 DALI Controller 90~305V AC / 127~431V DC 120 W (1 - 10 art.)
---	---

	83013 On/Off Driver 180~305V AC / 254~431V DC 120 W (1 - 10 art.)
---	--

	83012 DALI Controller 90~305V AC / 127~431V DC 60 W (1 - 5 art.)
---	---

Cables Electrification

Cable connector	No
-----------------	----

Unterwasserleuchten | 114 topLED 11 W DC 12 V | CRI 80
82650C36

Single emission submerged for outdoor application. The cold white LED light source with a general lighting light distribution is composed of 114 topped LEDs with CCT of 6000 K and a CRI 80; the source luminous flux is 1538 lm, with a 139.8 lm/W nominal luminous efficacy.

The device body is made of aisi 316l steel and features a steel finish; the diffuser is made of uv resistant polycarbonate. The ingress protection degree is IP68; the total weight is of 0.40 kg. The power supply driver is not provided and is to be ordered separately.

The total absorbed power is 11 W. The power supply cable is included and features a 5 m length.

The device features protection class III and can be wall lights-mounted with an outer casing, code 83022(for concrete or masonry).

Compliant with the EN 60598-1 standard and its specific provisions.

Energieeffizienzklasse

Dieses Produkt enthält 2 Lichtquellen der Energieeffizienzklasse D.

Illuminotechnical Eigenschaften

Light Output Ratio (LOR)	85 %
Lichtstrom (Lichtquelle)	1538 lm
Leuchten Lichtstrom	1318 lm
Consumption	11 W
Leuchten Lichtausbeute	119 lm/W
Farbtemperatur	6000 K
Standard Deviation of Colour Matching	3 Step MacAdam
Farbwiedergabeindex	80 Ra
Standardumgebungstemperatur	-40 / +50°C
Typische Temperatur am Glas	40°C

LED Life / Failure Ratio

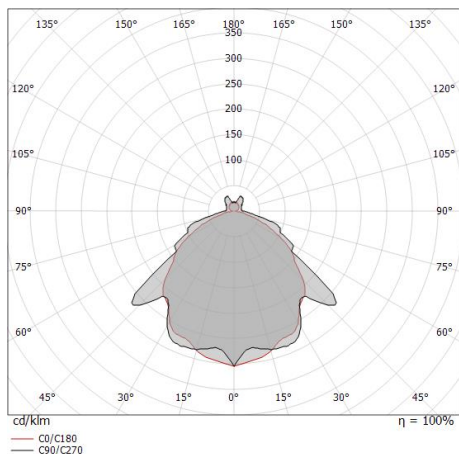
L70 B10 C0 145770h (at Tj 65 Ta 25)

UGR

UGR axial	27.8
UGR transversal	25.6
X=4H Y=8H	S=0.25H
Reflection factor	70/50/20

OPTICAL

Optik C90/C270	109°
Optik C0/C180	102°
Light distribution simmetry	Symmetrical 2 assis



Distance [m]	Cone diameter [m]	illuminance [lx]	E(0°)	E(C90)	E(C0)
0.5	1.39 1.24	1605 161 199	54.3°	51.1°	18
1.0	2.78 2.48	401 40 50	54.3°	51.1°	22
1.5	4.17 3.72	178 18 22	54.3°	51.1°	12
2.0	5.57 4.96	100 10 12	54.3°	51.1°	8
2.5	6.96 6.20	64 6 8	54.3°	51.1°	6
3.0	8.35 7.44	45 4 6	54.3°	51.1°	

Distance [m] Cone diameter [m] illuminance [lx]

— C0/C180 (Half-peak divergence: 102.2°)
— C90/C270 (Half-peak divergence: 108.6°)



MK68_Q | Submerged | Accessories
82650C36



Stecker - 3-Wege-Gelstecker - IP68 Max 3x1,5 mm²

Code
98991



Stecker - 3-Wege-Anschluss - IP68 Min. 3 x 0,5 mm² / Max. 3 x 1,5 mm²

Code
84893



Stecker

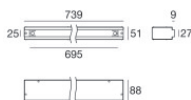
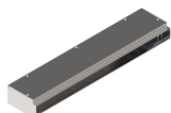
Code
89548



Klammer

installationsposition: wand, decke, boden L=101.5mm, H=45mm, D=41.5mm.
 Material:Stahl AISI 316, farbe:Stahl.

Finish
 **Code**
83020



Einbaugehäuse

installationsposition: boden; typ installation: mauerwerk L=739mm, H=88mm, D=51mm.
 Material:Stahl AISI 316, farbe:Stahl.

Finish
 **Code**
83022