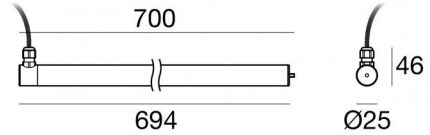


# MK68\_R



Unterwasserleuchten | 114 topLED 11 W DC 12 V  
CRI 80  
82642N36



| Technische Daten                                    |                          |
|---|--------------------------|
| Typ   | Oberfläche               |
| Installationsposition                               | Wand                     |
| Installationsumgebung                               | Outdoor                  |
| Lichtquelle   | LED                      |
| Circuit structure                                   | topLED                   |
| Optik   | General Lighting         |
| Light emission direction                            | frontal                  |
| Lampe Nennleistung                                  | 11 W DC                  |
| Lichtstrom (Lichtquelle)                            | 1538 lm                  |
| Ähnlichste Farbtemperatur / Tone                    | 4000 K                   |
| Farbwiedergabeindex                                 | 80 Ra                    |
| Gleichstrom/Gleichspannung                          | CV                       |
| Isolierklasse                                       | 3                        |
| IP  | IP68                     |
| Maximale Einbautiefe                                | 25 m                     |
| IK  | IK08                     |
| Glühdrahtprüfung                                    | 850°                     |
| Direkte Montage auf normal entflammaren Oberflächen | Ja                       |
| CE  | Ja                       |
| Einschließlich Driver                               | Nein                     |
| Leuchte dimmbar                                     | DALI - 1-10V             |
| Schwenkbarkeit                                      | Nein                     |
| Drehbarkeit   | Nein                     |
| Begehbarkeit  | Nein                     |
| Überrollbarkeit                                     | Nein                     |
| Einschließlich Kabel                                | Ja                       |
| Kabellänge  | 5 m                      |
| Harzbeschichtung                                    | Ja                       |
| Typ Lichtabstrahlung                                | Einflammig               |
| Nettogewicht  | 0.45 Kg                  |
| Schutz vor elektrostatischen Entladungen            | Nein                     |
| Schutz vor Stoßspannungen                           | Nein                     |
| Technische Merkmale des Produkts                    | Acquastop - UV Resistant |


## Oberfläche Gehäuse


|          |                 |
|----------|-----------------|
| Material | Stahl AISI 316L |
| Farbe    | Stahl           |


## Oberfläche Diffusor


|          |                            |
|----------|----------------------------|
| Material | Polycarbonat UV-beständige |
| Farbe    | transparent                |

## Elektronik

|   |   |
|---|---|
|  | 83010<br>On/Off Driver 90~264V AC / 127~370V DC 60 W (1 - 5 art.) |
|---|---|

|   |   |
|---|---|
|  | 83015<br>DALI Controller 90~305V AC / 127~431V DC 120 W (1 - 10 art.) |
|---|---|

|   |  |
|---|--|
|  | 83013<br>On/Off Driver 180~305V AC / 254~431V DC 120 W (1 - 10 art.) |
|---|--|

|   |   |
|---|---|
|  | 83012<br>DALI Controller 90~305V AC / 127~431V DC 60 W (1 - 5 art.) |
|---|---|

## Cables Electrification

|                 |    |
|-----------------|----|
| Cable connector | No |
|-----------------|----|

Unterwasserleuchten | 114 topLED 11 W DC 12 V | CRI 80  
82642N36

Single emission submerged for outdoor application. The natural white LED light source with a general lighting light distribution is composed of 114 topLEDs with CCT of 4000 K and a CRI 80; the source luminous flux is 1538 lm, with a 139.8 lm/W nominal luminous efficacy.

The device body is made of aisi 316l steel and features a steel finish; the diffuser is made of uv resistant polycarbonate. The ingress protection degree is IP68; the total weight is of 0.45 kg. The power supply driver is not provided and is to be ordered separately.

The total absorbed power is 11 W. The power supply cable is included and features a 5 m length.

The device features protection class III and can be wall lights-mounted with an outer casing, code 83022(for concrete or masonry).

Compliant with the EN 60598-1 standard and its specific provisions.

### Energieeffizienzklasse

Dieses Produkt enthält 2 Lichtquellen der Energieeffizienzklasse D.

### Illuminotechnical Eigenschaften

|                                       |                |
|---------------------------------------|----------------|
| Light Output Ratio (LOR)              | 83 %           |
| Lichtstrom (Lichtquelle)              | 1538 lm        |
| Leuchten Lichtstrom                   | 1285 lm        |
| Consumption                           | 11 W           |
| Leuchten Lichtausbeute                | 116 lm/W       |
| Farbtemperatur                        | 4000 K         |
| Standard Deviation of Colour Matching | 3 Step MacAdam |
| Farbwiedergabeindex                   | 80 Ra          |
| Standardumgebungstemperatur           | -40 / +50°C    |
| Typische Temperatur am Glas           | 40°C           |

### LED Life / Failure Ratio

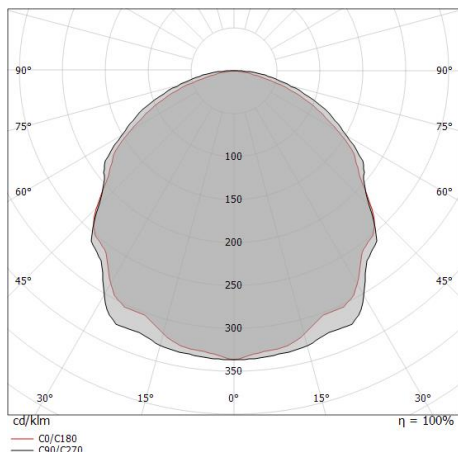
L70 B10 C0 145770h (at Tj 65 Ta 25 )

### UGR

|                   |          |
|-------------------|----------|
| UGR axial         | 28.5     |
| UGR transversal   | 27.4     |
| X=4H   Y=8H       | S=0.25H  |
| Reflection factor | 70/50/20 |

### OPTICAL

|                             |                     |
|-----------------------------|---------------------|
| Optik C90/C270              | 115°                |
| Optik C0/C180               | 111°                |
| Light distribution simmetry | Symmetrical 2 assis |



| Distance [m] | Cone diameter [m] | illuminance [lx]                      |
|--------------|-------------------|---------------------------------------|
| 0.5          | 1.56<br>1.46      | E(0°) 1731<br>E(C90) 137<br>E(C0) 157 |
| 1.0          | 3.12<br>2.91      | E(0°) 433<br>E(C90) 34<br>E(C0) 39    |
| 1.5          | 4.67<br>4.37      | E(0°) 192<br>E(C90) 15<br>E(C0) 17    |
| 2.0          | 6.23<br>5.82      | E(0°) 108<br>E(C90) 9<br>E(C0) 10     |
| 2.5          | 7.79<br>7.28      | E(0°) 69<br>E(C90) 5<br>E(C0) 6       |
| 3.0          | 9.35<br>8.73      | E(0°) 48<br>E(C90) 4<br>E(C0) 4       |

Distance [m]      Cone diameter [m]      illuminance [lx]

— C0/C180 (Half-peak divergence: 111.0°)  
- - C90/C270 (Half-peak divergence: 114.6°)



MK68\_R | Submerged | Accessories  
**82642N36**



Stecker - 3-Wege-Gelstecker - IP68 Max 3x1,5 mm<sup>2</sup>

**Code**  
98991



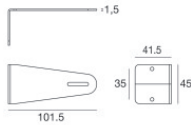
Stecker - 3-Wege-Anschluss - IP68 Min. 3 x 0,5 mm<sup>2</sup> / Max. 3 x 1,5 mm<sup>2</sup>

**Code**  
84893



Stecker

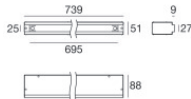
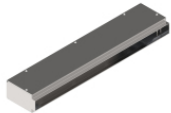
**Code**  
89548



Klammer

installationsposition: wand, decke, boden L=101.5mm, H=45mm, D=41.5mm.  
 Material:Stahl AISI 316, farbe:Stahl.

**Finish**  
 **Code**  
83020



Einbaugehäuse

installationsposition: boden; typ installation: mauerwerk L=739mm, H=88mm, D=51mm.  
 Material:Stahl AISI 316, farbe:Stahl.

**Finish**  
 **Code**  
83022