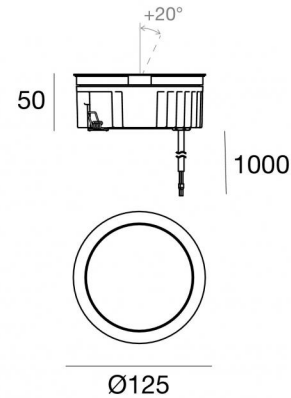


Uplights | 1 arrayLED 13 W DC 24 V | CRI 80
82463N60



| Technische Daten | |
|---|--------------------------------|
| Typ | Begehbar |
| Installationsposition | Boden |
| Installationsumgebung | Outdoor |
| Lichtquelle | LED |
| Circuit structure | arrayLED |
| Optik | Medium Wide Flood |
| Light emission direction | upward |
| Lampe Nennleistung | 13 W DC |
| Lichtstrom (Lichtquelle) | 1854 lm |
| Eingangsspannungsbereich | 24 V |
| Ähnlichste Farbtemperatur / Tone | 4000 K |
| Farbwiedergabeindex | 80 Ra |
| Gleichstrom/Gleichspannung | CV |
| Isolierklasse | 3 |
| IP | IP68 |
| Installationsbeschränkung | Nicht für Einsatz unter Wasser |
| IK | IK10 |
| Glühdrahtprüfung | 850° |
| Direkte Montage auf normal entflammaren Oberflächen | Ja |
| CE | Ja |
| Einschließlich Driver | Nein |
| C.V. - C.C. Converter | 24 V Konverter enthalten |
| Leuchte dimmbar | Nein |
| Schwenkbarkeit | Nein |
| Drehbarkeit | Ja |
| Gesamtwinkel (vertikale Ebene) | 20 ° |
| Begehbarkeit | Ja |
| Überrollbarkeit | Nein |
| Einschließlich Kabel | Ja |
| Kabellänge | 1 m |
| Harzbeschichtung | Ja |
| Typ Lichtabstrahlung | Einflammig |
| Nettogewicht | 0.9 Kg |
| Schutz vor elektrostatischen Entladungen | Nein |
| Schutz vor Stoßspannungen | Nein |
| Optiktechnologie | Honey comb |
| Technische Merkmale des Produkts | Acquastop |

Oberfläche Gehäuse

| | |
|-----------------|---|
| Material | Stranggepresstes Aluminium EN AB - 46100 |
| Farbe | Schwarz |
| Bearbeitungstyp | Offenporige Anodisierung + Pulverlackierung |

Oberfläche Diffusor

| | |
|-----------------|------------------------------|
| Material | Extra-helles Glas - Gehärtet |
| Farbe | transparent |
| Bearbeitungstyp | Siebdruck |

Oberfläche flansch

| | |
|-----------------|-----------------|
| Material | Stahl AISI 316L |
| Farbe | Stahl |
| Bearbeitungstyp | Bürsten |

Elektronik



89179
On/Off Driver 198~264V AC 24 W (1 art.)



89359
On/Off Driver 198~264V AC / 180~275V DC 48 W (1 - 3 art.)



99331
On/Off Driver 198~264V AC / 176~275V DC 150 W (1 - 11 art.)



99660
DALI - 1-10V Controller 24V DC 216 W (- art.)



C-E500023
DALI - 1-10V - Push and Simply Dim Controller 8~53V DC 576 W (- art.)

Cables Electrification

| | |
|-----------------|----|
| Cable connector | No |
|-----------------|----|



Uplights | 1 arrayLED 13 W DC 24 V | CRI 80 82463N60

Single emission uplights for outdoor application. The natural white LED light source with a medium wide flood light distribution is composed of 1 arrayed LEDs with CCT of 4000 K and a CRI 80; the source luminous flux is 1854 lm, with a 142.6 lm/W nominal luminous efficacy.

The device body is made of die-cast aluminium en ab - 46100 and features a black finish, processed by means of open pore anodizing + powder coating; the diffuser is made of extra clear glass - tempered with a silk-screening treatment. The ingress protection degree is IP68; the total weight is of 0.9 kg.

The total absorbed power is 13 W. The power supply cable is included and features a 1 m length.

The device features protection class III and can be floor-mounted with an outer casing, code 99857(for concrete or masonry).

Compliant with the EN 60598-1 standard and its specific provisions.

Energieeffizienzklasse

ieses Produkt enthält eine Lichtquelle der Energieeffizienzklasse D.

Illuminotechnical Eigenschaften

| | |
|---------------------------------------|----------------|
| Light Output Ratio (LOR) | 45 % |
| Lichtstrom (Lichtquelle) | 1854 lm |
| Leuchten Lichtstrom | 841 lm |
| Consumption | 13 W |
| Leuchten Lichtausbeute | 64 lm/W |
| Farbtemperatur | 4000 K |
| Standard Deviation of Colour Matching | 2 Step MacAdam |
| Farbwiedergabeindex | 80 Ra |
| Black Body Locus | On |
| Standardumgebungstemperatur | -20 / +50°C |
| Typische Temperatur am Glas | 40°C |

LED Life / Failure Ratio

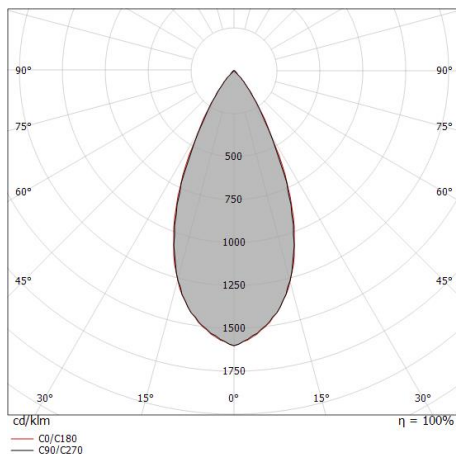
L70 B10 C0 296960h (at Tj 65 Ta 25)

UGR

| | |
|-------------------|----------|
| UGR axial | 14.4 |
| UGR transversal | 14.2 |
| X=4H Y=8H | S=0.25H |
| Reflection factor | 70/50/20 |

OPTICAL

| | |
|-----------------------------|-------------|
| Optik C0/C180 | 47° |
| Light distribution simmetry | Symmetrical |



| Distance [m] | Cone diameter [m] | illuminance [lx] |
|--------------|-------------------|---|
| 0.5 | 0.44 0.45 | E(0°) 5384 E(C90) 2069 E(C0) 2053 |
| 1.0 | 0.88 0.89 | E(0°) 1346 E(C90) 517 E(C0) 513 |
| 1.5 | 1.32 1.34 | E(0°) 598 E(C90) 230 E(C0) 228 |
| 2.0 | 1.76 1.78 | E(0°) 337 E(C90) 129 E(C0) 128 |
| 2.5 | 2.19 2.23 | E(0°) 215 E(C90) 83 E(C0) 82 |
| 3.0 | 2.63 2.67 | E(0°) 150 E(C90) 57 E(C0) 57 |

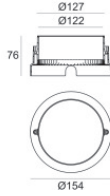
— C0/C180 (Half-peak divergence: 48.0°)
— C90/C270 (Half-peak divergence: 47.4°)

COLOR VECTOR GRAPHIC





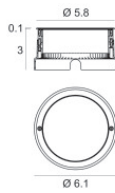
Orma_AJ | Uplights | Accessories
82463N60



Einbaugehäuse


installationsposition: boden; typ installation: mauerwerk L=154mm, H=76mm, D=154mm.
 Material:Kunststoff ABS, farbe:Schwarz.

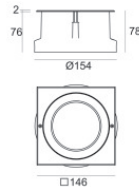
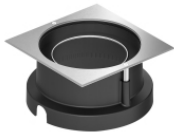
Code
 99652



Einbaugehäuse


installationsposition: boden; typ installation: mauerwerk L=105mm, H=76mm, D=105mm.
 Material:Stahl AISI 316, farbe:Stahl.

Finish
 **Code**
 99564



Einbaugehäuse

installationsposition: boden; typ installation: mauerwerk L=146mm, H=76mm, D=146mm.
 Material:Stahl AISI 316, farbe:Stahl.

Finish
 **Code**
 99857