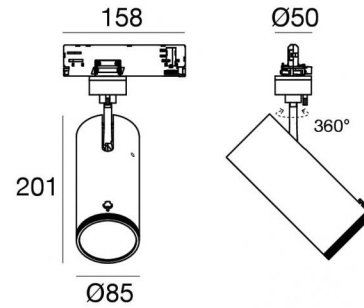


# Pound\_Focus



Scheinwerfer | 198-264 V  
1 arrayLED 32.5 W DC - 37 W AC | CRI 98  
**82449N85**



| Technische Daten                                    |                  |
|---|------------------|
| Typ   | Schiene          |
| Installationsposition                               | Decke            |
| Installationsumgebung                               | Indoor           |
| Lichtquelle   | LED              |
| Circuit structure                                   | arrayLED         |
| Optik   | Adjustable Focus |
| Light emission direction                            | frontal          |
| Lampe Nennleistung                                  | 32.5 W DC        |
| Gesamtleistung                                      | 37 W             |
| Lichtstrom (Lichtquelle)                            | 3790 lm          |
| Nominale Eingangsspannung                           | 220 - 240 V AC   |
| Eingangsspannungsbereich                            | 198 - 264 V AC   |
| Frequency   | 50 - 60 Hz       |
| Ähnlichste Farbtemperatur / Tone                    | 4000 K           |
| Farbwiedergabeindex                                 | 98 Ra            |
| Gleichstrom/Gleichspannung                          | AC               |
| Isolierklasse                                       | 2                |
| IP  | IP20             |
| Glühdrahtprüfung                                    | 850°             |
| Direkte Montage auf normal entflammaren Oberflächen | Ja               |
| CE  | Ja               |
| Einschließlich Driver                               | Driver           |
| Leuchte dimmbar                                     | Dimming on Board |
| Schwenkbarkeit                                      | Orientabile      |
| Gesamtwinkel (vertikale Ebene)                      | 90 °             |
| Gesamtwinkel (horizontale Ebene)                    | 360 °            |
| Drehbarkeit   | Nein             |
| Begehbarkeit  | Nein             |
| Überrollbarkeit                                     | Nein             |
| Einschließlich Kabel                                | Nein             |
| Harzbeschichtung                                    | Nein             |
| Typ Lichtabstrahlung                                | Einflammig       |
| Nettogewicht  | 0.92 Kg          |
| Schutz vor elektrostatischen Entladungen            | Ja               |
| Schutz vor Stoßspannungen                           | 2 KV             |

| Oberfläche Gehäuse |  |
|--------------------|--|
| Material           | Stranggepresstes Aluminium EN AB - 46100 |
| Farbe              | Schwarz                                  |
| Bearbeitungstyp    | Pulverbeschichtung                       |



Scheinwerfer | 198-264 V | 1 arrayLED 32.5 W DC - 37 W AC | CRI 98 | Maximaler optischer Winkel  
**82449N85**

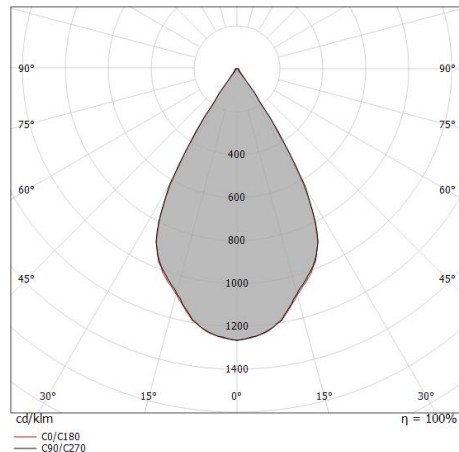
Single emission projectors for indoor application. The natural white LED light source with a adjustable focus light distribution is composed of 1 arrayed LEDs with CCT of 4000 K and a CRI 98; the source luminous flux is 3790 lm, with a 116.6 lm/W nominal luminous efficacy.

The device body is made of die-cast aluminium en ab - 46100 and features a black finish, processed by means of powder coating. The ingress protection degree is IP20; the total weight is of 0.92 kg.

The total absorbed power is 37 W.

The device features protection class II and can be ceiling-mounted.

Compliant with the EN 60598-1 standard and its specific provisions.



| Distance [m] | Cone diameter [m] | illuminance [lx]                         |
|--------------|-------------------|--|
| 0.5          | 0.58<br>0.57      | E(0°) 11047<br>E(C90) 3611<br>E(C0) 3644 |
| 1.0          | 1.15<br>1.14      | E(0°) 2763<br>E(C90) 903<br>E(C0) 911    |
| 1.5          | 1.73<br>1.71      | E(0°) 1227<br>E(C90) 401<br>E(C0) 405    |
| 2.0          | 2.30<br>2.28      | E(0°) 690<br>E(C90) 226<br>E(C0) 228     |
| 2.5          | 2.88<br>2.85      | E(0°) 442<br>E(C90) 144<br>E(C0) 146     |
| 3.0          | 3.45<br>3.42      | E(0°) 307<br>E(C90) 100<br>E(C0) 101     |

— C0/C180 (Half-peak divergence: 59.4°)  
 — C90/C270 (Half-peak divergence: 59.8°)

### Energieeffizienzklasse

ieses Produkt enthält eine Lichtquelle der Energieeffizienzklasse F.

### Illuminotechnical Eigenschaften

|                                       |                |
|---------------------------------------|----------------|
| Light Output Ratio (LOR)              | 57 %           |
| Lichtstrom (Lichtquelle)              | 3790 lm        |
| Leuchten Lichtstrom                   | 2184 lm        |
| Consumption                           | 37 W           |
| Leuchten Lichtausbeute                | 59 lm/W        |
| Farbtemperatur                        | 4000 K         |
| Standard Deviation of Colour Matching | 2 Step MacAdam |
| Farbwiedergabeindex                   | 98 Ra          |
| Black Body Locus                      | On             |
| Standardumgebungstemperatur           | -20 / +50°C    |
| Typische Temperatur am Glas           | 40°C           |

### LED Life / Failure Ratio

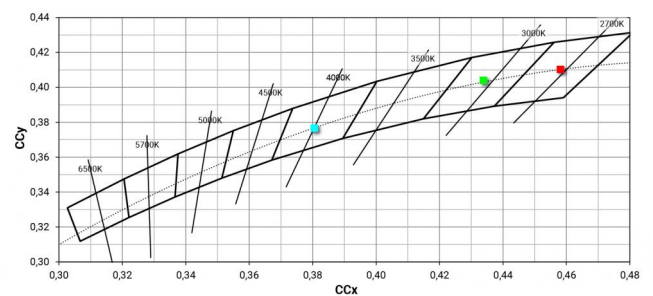
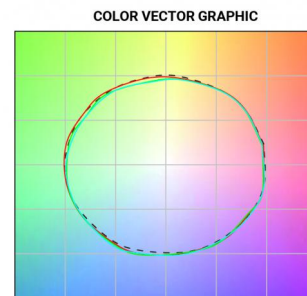
L70 B10 C0 252000h (at Tj 65 Ta 25 )

### UGR

|                   |          |
|-------------------|----------|
| UGR axial         | 20.7     |
| UGR transversal   | 20.6     |
| X=4H   Y=8H       | S=0.25H  |
| Reflection factor | 70/50/20 |

### OPTICAL

|                             |             |
|-----------------------------|-------------|
| Optik C0/C180               | 59°         |
| Light distribution simmetry | Symmetrical |





Scheinwerfer | 198-264 V | 1 arrayLED 32.5 W DC - 37 W AC | CRI 98 | Minimaler optischer

Winkel

**82449N85**

Single emission projectors for indoor application. The natural white LED light source with a adjustable focus light distribution is composed of 1 arrayed LEDs with CCT of 4000 K and a CRI 98; the source luminous flux is 3790 lm, with a 116.6 lm/W nominal luminous efficacy.

The device body is made of die-cast aluminium en ab - 46100 and features a black finish, processed by means of powder coating. The ingress protection degree is IP20; the total weight is of 0.92 kg.

The total absorbed power is 37 W.

The device features protection class II and can be ceiling-mounted.

Compliant with the EN 60598-1 standard and its specific provisions.

### Energieeffizienzklasse

ieses Produkt enthält eine Lichtquelle der Energieeffizienzklasse F.

### Illuminotechnical Eigenschaften

|                                       |                |
|---------------------------------------|----------------|
| Light Output Ratio (LOR)              | 27 %           |
| Lichtstrom (Lichtquelle)              | 3790 lm        |
| Leuchten Lichtstrom                   | 1046 lm        |
| Consumption                           | 37 W           |
| Leuchten Lichtausbeute                | 28 lm/W        |
| Farbtemperatur                        | 4000 K         |
| Standard Deviation of Colour Matching | 2 Step MacAdam |
| Farbwiedergabeindex                   | 98 Ra          |
| Black Body Locus                      | On             |
| Standardumgebungstemperatur           | -20 / +50°C    |
| Typische Temperatur am Glas           | 40°C           |

### LED Life / Failure Ratio

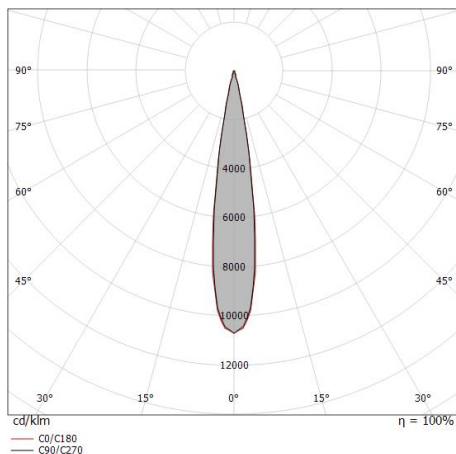
L70 B10 C0 252000h (at Tj 65 Ta 25 )

### UGR

|                   |          |
|-------------------|----------|
| UGR axial         | 11.3     |
| UGR transversal   | 11.3     |
| X=4H   Y=8H       | S=0.25H  |
| Reflection factor | 70/50/20 |

### OPTICAL

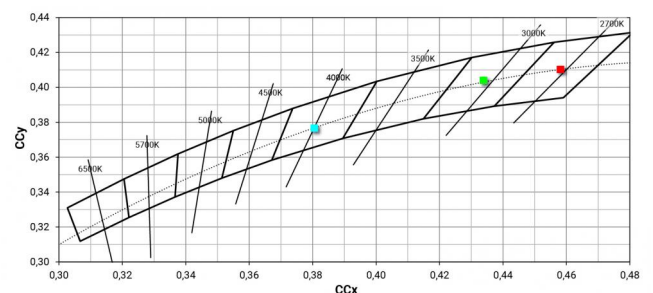
|                             |             |
|-----------------------------|-------------|
| Optik C0/C180               | 16°         |
| Light distribution simmetry | Symmetrical |



| Distance [m] | Cone diameter [m] | illuminance [lx]                                     |
|--------------|-------------------|--|
| 0.5          | 0.15<br>0.15      | E(0°) 44803<br>E(C90) 8.2° 22187<br>E(C0) 8.5° 21738 |
| 1.0          | 0.29<br>0.30      | E(0°) 11201<br>E(C90) 8.2° 5547<br>E(C0) 8.5° 5435   |
| 1.5          | 0.43<br>0.45      | E(0°) 4978<br>E(C90) 8.2° 2465<br>E(C0) 8.5° 2415    |
| 2.0          | 0.58<br>0.60      | E(0°) 2800<br>E(C90) 8.2° 1387<br>E(C0) 8.5° 1359    |
| 2.5          | 0.72<br>0.75      | E(0°) 1792<br>E(C90) 8.2° 887<br>E(C0) 8.5° 870      |
| 3.0          | 0.86<br>0.90      | E(0°) 1245<br>E(C90) 8.2° 616<br>E(C0) 8.5° 604      |

— C0/C180 (Half-peak divergence: 17.0°)  
— C90/C270 (Half-peak divergence: 16.4°)

### COLOR VECTOR GRAPHIC





|  |  |  |                                     |
|--|--|--|-------------------------------------|
|  |  | <p>Stromversorgung<br/>Material:PC, farbe:Weiß.</p>    | <p><b>Code</b><br/><u>81033</u></p> |
|  |  | <p>Stromversorgung<br/>Material:PC, farbe:Weiß.</p>    | <p><b>Code</b><br/><u>81036</u></p> |
|  |  | <p>Stromversorgung<br/>Material:PC, farbe:Schwarz.</p> | <p><b>Code</b><br/><u>81037</u></p> |
|  |  | <p>Stromversorgung<br/>Material:PC, farbe:Schwarz.</p> | <p><b>Code</b><br/><u>81034</u></p> |
|  |  | <p>Endkappe<br/>Material:PC, farbe:Weiß.</p>           | <p><b>Code</b><br/><u>80999</u></p> |
|  |  | <p>Endkappe<br/>Material:PC, farbe:Schwarz.</p>        | <p><b>Code</b><br/><u>81000</u></p> |
|  |  | <p>Endkappe<br/>Material:PC, farbe:Weiß.</p>           | <p><b>Code</b><br/><u>81002</u></p> |
|  |  | <p>Endkappe<br/>Material:PC, farbe:Schwarz.</p>        | <p><b>Code</b><br/><u>81003</u></p> |



Endkappe  
Material:Weiß.

**Code**  
81084



Endkappe  
Material:Schwarz, farbe:Schwarz.

**Code**  
81085



Deckenrosette  
Material:Kunststoff, farbe:Weiß.

**Code**  
81012



Deckenrosette  
Material:Kunststoff, farbe:Schwarz.

**Code**  
81014



Deckenrosette  
Material:Kunststoff, farbe:Weiß.

**Code**  
81013



Deckenrosette  
Material:Kunststoff, farbe:Schwarz.

**Code**  
81015



Klammer  
L=35mm, H=14mm, D=24mm.  
Material:Aluminium, farbe:poliert.

**Finish**  
Anod. Al. **Code**  
81086



Klammer  
L=180mm, H=24mm, D=26mm.  
Material:Aluminium, farbe:Eloxiertes Aluminium, bearbeitungstyp :Eloxierung.

**Finish**  
**Code**  
81024



Klammer

L=180mm, H=24mm, D=20mm.

Material:Aluminium, farbe:Weiß RAL 9010, bearbeitungstyp :Lackierung.

**Finish**

White

**Code**

81025



Klammer

L=180mm, H=24mm, D=20mm.

Material:Aluminium, farbe:Schwarz RAL 9005, bearbeitungstyp :Lackierung.

**Finish**

Black

**Code**

81026



Klammer

L=35mm, H=14mm, D=24mm.

Material:Aluminium, farbe:Weiß, bearbeitungstyp :Lackierung.

**Finish**

White

**Code**

81087



Klammer

L=35mm, H=14mm, D=24mm.

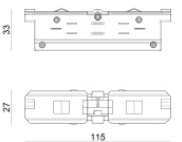
Material:Aluminium, farbe:Schwarz, bearbeitungstyp :Lackierung.

**Finish**

Black

**Code**

81088



Kabelverbindung

Typ linear.

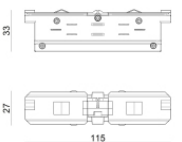
Material:PC, farbe:Weiß.

**Finish**

White

**Code**

81039



Kabelverbindung

Typ linear.

Material:PC, farbe:Schwarz.

**Finish**

Black

**Code**

81040



Kabelverbindung

Typ linear.

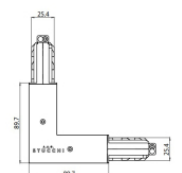
Material:PC, farbe:Weiß.

**Finish**

White

**Code**

81042



Kabelverbindung

Typ linear.

Material:PC, farbe:Weiß.

**Finish**

White

**Code**

81045



|        |       | <p>Kabelverbindung<br/>Typ linear.<br/>Material:PC, farbe:Weiß.</p>         | <table border="1"> <thead> <tr> <th>Finish</th> <th>Code</th> </tr> </thead> <tbody> <tr> <td>White</td> <td>81048</td> </tr> </tbody> </table> | Finish | Code | White | 81048 |
|--------|-------|---|---|--------|------|-------|-------|
| Finish | Code  |   |   |        |      |       |       |
| White  | 81048 |   |   |        |      |       |       |
|        |       | <p>Kabelverbindung<br/>Typ flexible curve.<br/>Material:PC, farbe:Weiß.</p> | <table border="1"> <thead> <tr> <th>Finish</th> <th>Code</th> </tr> </thead> <tbody> <tr> <td>White</td> <td>81066</td> </tr> </tbody> </table> | Finish | Code | White | 81066 |
| Finish | Code  |   |   |        |      |       |       |
| White  | 81066 |   |   |        |      |       |       |
|        |       | <p>Kabelverbindung<br/>Typ linear.<br/>Material:PC, farbe:Weiß.</p>         | <table border="1"> <thead> <tr> <th>Finish</th> <th>Code</th> </tr> </thead> <tbody> <tr> <td>White</td> <td>81063</td> </tr> </tbody> </table> | Finish | Code | White | 81063 |
| Finish | Code  |   |   |        |      |       |       |
| White  | 81063 |   |   |        |      |       |       |
|        |       | <p>Kabelverbindung<br/>Typ linear.<br/>Material:PC, farbe:Weiß.</p>         | <table border="1"> <thead> <tr> <th>Finish</th> <th>Code</th> </tr> </thead> <tbody> <tr> <td>White</td> <td>81051</td> </tr> </tbody> </table> | Finish | Code | White | 81051 |
| Finish | Code  |   |   |        |      |       |       |
| White  | 81051 |   |   |        |      |       |       |
|        |       | <p>Kabelverbindung<br/>Typ linear.<br/>Material:PC, farbe:Weiß.</p>         | <table border="1"> <thead> <tr> <th>Finish</th> <th>Code</th> </tr> </thead> <tbody> <tr> <td>White</td> <td>81054</td> </tr> </tbody> </table> | Finish | Code | White | 81054 |
| Finish | Code  |   |   |        |      |       |       |
| White  | 81054 |   |   |        |      |       |       |
|        |       | <p>Kabelverbindung<br/>Typ linear.<br/>Material:PC, farbe:Weiß.</p>         | <table border="1"> <thead> <tr> <th>Finish</th> <th>Code</th> </tr> </thead> <tbody> <tr> <td>White</td> <td>81057</td> </tr> </tbody> </table> | Finish | Code | White | 81057 |
| Finish | Code  |   |   |        |      |       |       |
| White  | 81057 |   |   |        |      |       |       |
|        |       | <p>Kabelverbindung<br/>Typ linear.<br/>Material:PC, farbe:Weiß.</p>         | <table border="1"> <thead> <tr> <th>Finish</th> <th>Code</th> </tr> </thead> <tbody> <tr> <td>White</td> <td>81060</td> </tr> </tbody> </table> | Finish | Code | White | 81060 |
| Finish | Code  |   |   |        |      |       |       |
| White  | 81060 |   |   |        |      |       |       |
|        |       | <p>Kabelverbindung<br/>Typ linear.<br/>Material:PC, farbe:Schwarz.</p>      | <table border="1"> <thead> <tr> <th>Finish</th> <th>Code</th> </tr> </thead> <tbody> <tr> <td>Black</td> <td>81043</td> </tr> </tbody> </table> | Finish | Code | Black | 81043 |
| Finish | Code  |   |   |        |      |       |       |
| Black  | 81043 |   |   |        |      |       |       |



|   |   |  |                                   |                                 |
|---|---|--|-----------------------------------|---------------------------------|
|    |    | <p>Kabelverbindung</p> <p>Typ linear.</p> <p>Material:PC, farbe:Schwarz.</p>         | <p><b>Finish</b></p> <p>Black</p> | <p><b>Code</b></p> <p>81046</p> |
|    |    | <p>Kabelverbindung</p> <p>Typ linear.</p> <p>Material:PC, farbe:Schwarz.</p>         | <p><b>Finish</b></p> <p>Black</p> | <p><b>Code</b></p> <p>81049</p> |
|    |    | <p>Kabelverbindung</p> <p>Typ flexible curve.</p> <p>Material:PC, farbe:Schwarz.</p> | <p><b>Finish</b></p> <p>Black</p> | <p><b>Code</b></p> <p>81067</p> |
|  |  | <p>Kabelverbindung</p> <p>Typ linear.</p> <p>Material:PC, farbe:Schwarz.</p>         | <p><b>Finish</b></p> <p>Black</p> | <p><b>Code</b></p> <p>81064</p> |
|  |  | <p>Kabelverbindung</p> <p>Typ linear.</p> <p>Material:PC, farbe:Schwarz.</p>         | <p><b>Finish</b></p> <p>Black</p> | <p><b>Code</b></p> <p>81052</p> |
|  |  | <p>Kabelverbindung</p> <p>Typ linear.</p> <p>Material:PC, farbe:Schwarz.</p>         | <p><b>Finish</b></p> <p>Black</p> | <p><b>Code</b></p> <p>81055</p> |
|  |  | <p>Kabelverbindung</p> <p>Typ linear.</p> <p>Material:PC, farbe:Schwarz.</p>         | <p><b>Finish</b></p> <p>Black</p> | <p><b>Code</b></p> <p>81058</p> |
|  |  | <p>Kabelverbindung</p> <p>Typ linear.</p> <p>Material:PC, farbe:Schwarz.</p>         | <p><b>Finish</b></p> <p>Black</p> | <p><b>Code</b></p> <p>81061</p> |





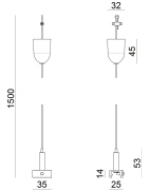
Hängeleuchten  
Material:Kunststoff, farbe:Weiß.

**Code**  
81006



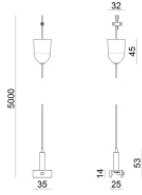
Hängeleuchten  
Material:Kunststoff, farbe:Weiß.

**Code**  
81007



Hängeleuchten  
Material:Kunststoff, farbe:Schwarz.

**Code**  
81008



Hängeleuchten  
Material:Kunststoff, farbe:Schwarz.

**Code**  
81009



Hängeleuchten  
Material:Kunststoff, farbe:Weiß.

**Code**  
81018



Hängeleuchten  
Material:Kunststoff, farbe:Schwarz.

**Code**  
81019



Hängeleuchten  
Material:Kunststoff, farbe:Weiß.

**Code**  
81021



Hängeleuchten  
Material:Kunststoff, farbe:Schwarz.

**Code**  
81022



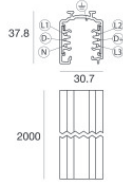
|  |  |   |                                     |
|--|--|---|-------------------------------------|
|  |  | <p>Drahtabdeckung<br/>Material:PC, farbe:Weiß.</p>    | <p><b>Code</b><br/><u>81069</u></p> |
|  |  | <p>Drahtabdeckung<br/>Material:PC, farbe:Weiß.</p>    | <p><b>Code</b><br/><u>81072</u></p> |
|  |  | <p>Drahtabdeckung<br/>Material:PC, farbe:Weiß.</p>    | <p><b>Code</b><br/><u>81075</u></p> |
|  |  | <p>Drahtabdeckung<br/>Material:PC, farbe:Weiß.</p>    | <p><b>Code</b><br/><u>81078</u></p> |
|  |  | <p>Drahtabdeckung<br/>Material:PC, farbe:Weiß.</p>    | <p><b>Code</b><br/><u>81081</u></p> |
|  |  | <p>Drahtabdeckung<br/>Material:PC, farbe:Schwarz.</p> | <p><b>Code</b><br/><u>81070</u></p> |
|  |  | <p>Drahtabdeckung<br/>Material:PC, farbe:Schwarz.</p> | <p><b>Code</b><br/><u>81073</u></p> |
|  |  | <p>Drahtabdeckung<br/>Material:PC, farbe:Schwarz.</p> | <p><b>Code</b><br/><u>81076</u></p> |



|  |  |  |                                     |
|--|--|--|-------------------------------------|
|  |  | <p>Drahtabdeckung<br/>Material:PC, farbe:Schwarz.</p>      | <p><b>Code</b><br/><u>81079</u></p> |
|  |  | <p>Drahtabdeckung<br/>Material:PC, farbe:Schwarz.</p>      | <p><b>Code</b><br/><u>81082</u></p> |
|  |  | <p>Drahtabdeckung<br/>Material:Weiß.</p>                   | <p><b>Code</b><br/><u>83249</u></p> |
|  |  | <p>Drahtabdeckung<br/>Material:Schwarz, farbe:Schwarz.</p> | <p><b>Code</b><br/><u>83250</u></p> |
|  |  |  | <p><b>Code</b><br/><u>81094</u></p> |
|  |  |  | <p><b>Code</b><br/><u>81091</u></p> |
|  |  |  | <p><b>Code</b><br/><u>81095</u></p> |
|  |  |  | <p><b>Code</b><br/><u>81093</u></p> |



|  |          |   |        |       |
|--|----------|---|--------|-------|
|  | Werkzeug | Code  |        |       |
|  |          | 81005   |        |       |
|  |          | Schiene   | Finish | Code  |
|  |          | Länge: 1000mm; Typ Schiene: Standard.                           | White  | 80990 |
|  |          | Material:Aluminium, farbe:Weiß, bearbeitungstyp :Lackierung.    |        |       |
|  |          | Schiene   | Finish | Code  |
|  |          | Länge: 2000mm; Typ Schiene: Standard.                           | White  | 80991 |
|  |          | Material:Aluminium, farbe:Weiß, bearbeitungstyp :Lackierung.    |        |       |
|  |          | Schiene   | Finish | Code  |
|  |          | Länge: 3000mm; Typ Schiene: Standard.                           | White  | 80992 |
|  |          | Material:Aluminium, farbe:Weiß, bearbeitungstyp :Lackierung.    |        |       |
|  |          | Schiene   | Finish | Code  |
|  |          | Länge: 1000mm; Typ Schiene: Standard.                           | Black  | 80993 |
|  |          | Material:Aluminium, farbe:Schwarz, bearbeitungstyp :Lackierung. |        |       |
|  |          | Schiene   | Finish | Code  |
|  |          | Länge: 2000mm; Typ Schiene: Standard.                           | Black  | 80994 |
|  |          | Material:Aluminium, farbe:Schwarz, bearbeitungstyp :Lackierung. |        |       |
|  |          | Schiene   | Finish | Code  |
|  |          | Länge: 3000mm; Typ Schiene: Standard.                           | Black  | 80995 |
|  |          | Material:Aluminium, farbe:Schwarz, bearbeitungstyp :Lackierung. |        |       |
|  |          | Schiene   | Finish | Code  |
|  |          | Länge: 1000mm; Typ Schiene: Standard.                           | White  | 83336 |
|  |          | Material:Aluminium, farbe:Weiß, bearbeitungstyp :Lackierung.    |        |       |

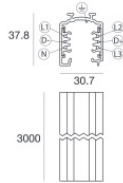


Schiene

Länge: 2000mm; Typ Schiene: Standard.

Material:Aluminium, farbe:Weiß, bearbeitungstyp :Lackierung.

| Finish | Code  |
|--------|-------|
| White  | 83337 |

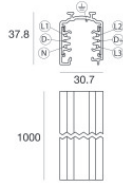
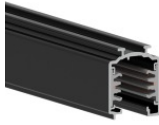


Schiene

Länge: 3000mm; Typ Schiene: Standard.

Material:Aluminium, farbe:Weiß, bearbeitungstyp :Lackierung.

| Finish | Code  |
|--------|-------|
| White  | 83338 |

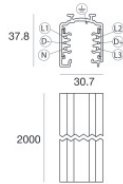
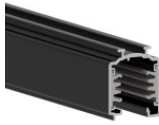


Schiene

Länge: 1000mm; Typ Schiene: Standard.

Material:Aluminium, farbe:Schwarz, bearbeitungstyp :Lackierung.

| Finish | Code  |
|--------|-------|
| Black  | 83339 |

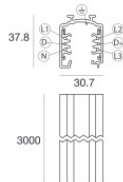


Schiene

Länge: 2000mm; Typ Schiene: Standard.

Material:Aluminium, farbe:Schwarz, bearbeitungstyp :Lackierung.

| Finish | Code  |
|--------|-------|
| Black  | 83340 |



Schiene

Länge: 3000mm; Typ Schiene: Standard.

Material:Aluminium, farbe:Schwarz, bearbeitungstyp :Lackierung.

| Finish | Code  |
|--------|-------|
| Black  | 83341 |