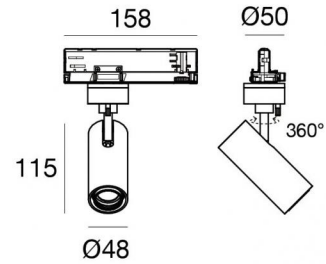




Scheinwerfer | 198-264 V
1 arrayLED 13 W DC - 15.5 W AC | CRI 90
82227W30



| Technische Daten | |
|---|------------------|
| Typ | Schiene |
| Installationsposition | Decke |
| Installationsumgebung | Indoor |
| Lichtquelle | LED |
| Circuit structure | arrayLED |
| Optik | Flood |
| Light emission direction | frontal |
| Lampe Nennleistung | 13 W DC |
| Gesamtleistung | 15.5 W |
| Lichtstrom (Lichtquelle) | 1578 lm |
| Nominale Eingangsspannung | 220 - 240 V AC |
| Eingangsspannungsbereich | 198 - 264 V AC |
| Frequency | 50 - 60 Hz |
| Ähnlichste Farbtemperatur / Tone | 3000 K |
| Farbwiedergabeindex | 90 Ra |
| Gleichstrom/Gleichspannung | AC |
| Isolierklasse | 2 |
| IP | IP20 |
| Glühdrahtprüfung | 850° |
| Direkte Montage auf normal entflammaren Oberflächen | Ja |
| CE | Ja |
| Einschließlich Driver | Driver |
| Leuchte dimmbar | Dimming on Board |
| Schwenkbarkeit | Orientabile |
| Gesamtwinkel (vertikale Ebene) | 90 ° |
| Gesamtwinkel (horizontale Ebene) | 360 ° |
| Drehbarkeit | Nein |
| Begehbarkeit | Nein |
| Überrollbarkeit | Nein |
| Einschließlich Kabel | Nein |
| Harzbeschichtung | Nein |
| Typ Lichtabstrahlung | Einflammig |
| Nettogewicht | 0.39 Kg |
| Schutz vor elektrostatischen Entladungen | Ja |
| Schutz vor Stoßspannungen | 2 KV |
| Optiktechnologie | Anti - Glare |

| Oberfläche Gehäuse | |
|--------------------|--|
| Material | Stranggepresstes Aluminium EN AB - 46100 |
| Farbe | Weiß |
| Bearbeitungstyp | Pulverbeschichtung |



Scheinwerfer | 198-264 V | 1 arrayLED 13 W DC - 15.5 W AC | CRI 90
82227W30

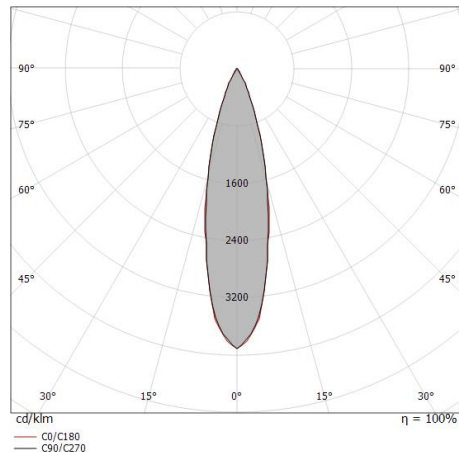
Single emission projectors for indoor application. The warm white LED light source with a flood light distribution is composed of 1 arrayed LEDs with CCT of 3000 K and a CRI 90; the source luminous flux is 1578 lm, with a 121.4 lm/W nominal luminous efficacy.

The device body is made of die-cast aluminium en ab - 46100 and features a white finish, processed by means of powder coating. The ingress protection degree is IP20; the total weight is of 0.39 kg.

The total absorbed power is 15.5 W.

The device features protection class II and can be ceiling-mounted.

Compliant with the EN 60598-1 standard and its specific provisions.



| Distance [m] | Cone diameter [m] | illuminance [lx] |
|--------------|-------------------|--|
| 0.5 | 0.23 0.23 | E(0°) 17303 E(C90) 12.7° 8086 E(C0) 13.1° 8050 |
| 1.0 | 0.45 0.47 | E(0°) 4326 E(C90) 12.7° 2022 E(C0) 13.1° 2012 |
| 1.5 | 0.68 0.70 | E(0°) 1923 E(C90) 12.7° 998 E(C0) 13.1° 894 |
| 2.0 | 0.90 0.93 | E(0°) 1081 E(C90) 12.7° 505 E(C0) 13.1° 503 |
| 2.5 | 1.13 1.16 | E(0°) 692 E(C90) 12.7° 323 E(C0) 13.1° 322 |
| 3.0 | 1.35 1.40 | E(0°) 481 E(C90) 12.7° 225 E(C0) 13.1° 224 |

— C0/C180 (Half-peak divergence: 26.2°)
 — C90/C270 (Half-peak divergence: 25.4°)

Energieeffizienzklasse

ieses Produkt enthält eine Lichtquelle der Energieeffizienzklasse E.

Illuminotechnical Eigenschaften

| | |
|---------------------------------------|----------------|
| Light Output Ratio (LOR) | 70 % |
| Lichtstrom (Lichtquelle) | 1578 lm |
| Leuchten Lichtstrom | 1105 lm |
| Consumption | 15.5 W |
| Leuchten Lichtausbeute | 71 lm/W |
| Farbtemperatur | 3000 K |
| Standard Deviation of Colour Matching | 2 Step MacAdam |
| Farbwiedergabeindex | 90 Ra |
| Colour Rendering Index | 60 R9 |
| Black Body Locus | On |
| Standardumgebungstemperatur | -20 / +50°C |
| Typische Temperatur am Glas | 40°C |

LED Life / Failure Ratio

L70 B10 C0 252000h (at Tj 65 Ta 25)

UGR

| | |
|-------------------|----------|
| UGR axial | 16.4 |
| UGR transversal | 16.1 |
| X=4H Y=8H | S=0.25H |
| Reflection factor | 70/50/20 |

OPTICAL

| | |
|-----------------------------|-------------|
| Optik C0/C180 | 25° |
| Light distribution simmetry | Symmetrical |

COLOR VECTOR GRAPHIC





Optik
Lichtverteilung: spot,Material Verkleidung: polycarbonat uv-beständige

Code
99805



Optik
Lichtverteilung: medium flood,Material Verkleidung: ,polycarbonat uv-
beständige,polycarbonat uv-beständige,polycarbonat uv-beständige

Code
99806



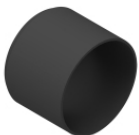
Optik
Lichtverteilung: flood,Material Verkleidung: ,polycarbonat uv-beständige,polycarbonat uv-
beständige,polycarbonat uv-beständige

Code
99807



Blendschutz
Blendschutzart: schermo cilindrico 45°.
Material:Pom-C, farbe:Schwarz.

Code
99773



Blendschutz
Blendschutzart: schermo cilindrico.
Material:Pom-C, farbe:Schwarz.

Code
99774



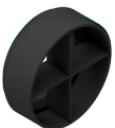
Diffusor
Diffusorart: filtro ellittico.
Material:Pom-C, farbe:Schwarz.

Code
99775



Blendschutz
Blendschutzart: wabenraster.
Material:Pom-C, farbe:Schwarz.

Code
99776



Blendschutz
Blendschutzart: frangiluce a croce.
Material:Pom-C, farbe:Schwarz.

Code
99777



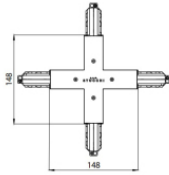
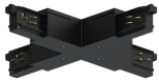
| | | <p>Schiene Länge: 1000mm; Typ Schiene: Standard. Material:Aluminium, farbe:Weiß, bearbeitungstyp :Lackierung.</p> | <table border="1"> <thead> <tr> <th>Finish</th> <th>Code</th> </tr> </thead> <tbody> <tr> <td>White</td> <td>83336</td> </tr> </tbody> </table> | Finish | Code | White | 83336 |
|--------|-------|--|---|--------|-------|-------|-------|
| Finish | Code | | | | | | |
| White | 83336 | | | | | | |
| | | <p>Schiene Länge: 2000mm; Typ Schiene: Standard. Material:Aluminium, farbe:Weiß, bearbeitungstyp :Lackierung.</p> | <table border="1"> <thead> <tr> <th>Finish</th> <th>Code</th> </tr> </thead> <tbody> <tr> <td>White</td> <td>83337</td> </tr> </tbody> </table> | Finish | Code | White | 83337 |
| Finish | Code | | | | | | |
| White | 83337 | | | | | | |
| | | <p>Schiene Länge: 2000mm; Typ Schiene: Standard. Material:Aluminium, farbe:Weiß, bearbeitungstyp :Lackierung.</p> | <table border="1"> <thead> <tr> <th>Finish</th> <th>Code</th> </tr> </thead> <tbody> <tr> <td>White</td> <td>80991</td> </tr> </tbody> </table> | Finish | Code | White | 80991 |
| Finish | Code | | | | | | |
| White | 80991 | | | | | | |
| | | <p>Schiene Länge: 2000mm; Typ Schiene: Standard. Material:Aluminium, farbe:Schwarz, bearbeitungstyp :Lackierung.</p> | <table border="1"> <thead> <tr> <th>Finish</th> <th>Code</th> </tr> </thead> <tbody> <tr> <td>Black</td> <td>83340</td> </tr> </tbody> </table> | Finish | Code | Black | 83340 |
| Finish | Code | | | | | | |
| Black | 83340 | | | | | | |
| | | <p>Schiene Länge: 3000mm; Typ Schiene: Standard. Material:Aluminium, farbe:Schwarz, bearbeitungstyp :Lackierung.</p> | <table border="1"> <thead> <tr> <th>Finish</th> <th>Code</th> </tr> </thead> <tbody> <tr> <td>Black</td> <td>80995</td> </tr> </tbody> </table> | Finish | Code | Black | 80995 |
| Finish | Code | | | | | | |
| Black | 80995 | | | | | | |
| | | <p>Stromversorgung Material:PC, farbe:Weiß.</p> | <table border="1"> <thead> <tr> <th>Code</th> </tr> </thead> <tbody> <tr> <td>81033</td> </tr> </tbody> </table> | Code | 81033 | | |
| Code | | | | | | | |
| 81033 | | | | | | | |
| | | <p>Stromversorgung Material:PC, farbe:Schwarz.</p> | <table border="1"> <thead> <tr> <th>Code</th> </tr> </thead> <tbody> <tr> <td>81034</td> </tr> </tbody> </table> | Code | 81034 | | |
| Code | | | | | | | |
| 81034 | | | | | | | |
| | | <p>Schiene Länge: 2000mm; Typ Schiene: Standard. Material:Aluminium, farbe:Schwarz, bearbeitungstyp :Lackierung.</p> | <table border="1"> <thead> <tr> <th>Finish</th> <th>Code</th> </tr> </thead> <tbody> <tr> <td>Black</td> <td>80994</td> </tr> </tbody> </table> | Finish | Code | Black | 80994 |
| Finish | Code | | | | | | |
| Black | 80994 | | | | | | |



| | | <p>Schiene Länge: 3000mm; Typ Schiene: Standard. Material:Aluminium, farbe:Weiß, bearbeitungstyp :Lackierung.</p> | <table border="1"> <thead> <tr> <th>Finish</th> <th>Code</th> </tr> </thead> <tbody> <tr> <td>White</td> <td>83338</td> </tr> </tbody> </table> | Finish | Code | White | 83338 |
|--------|-------|---|---|--------|-------|-------|-------|
| Finish | Code | | | | | | |
| White | 83338 | | | | | | |
| | | <p>Kabelverbindung Typ linear. Material:PC, farbe:Schwarz.</p> | <table border="1"> <thead> <tr> <th>Finish</th> <th>Code</th> </tr> </thead> <tbody> <tr> <td>Black</td> <td>81043</td> </tr> </tbody> </table> | Finish | Code | Black | 81043 |
| Finish | Code | | | | | | |
| Black | 81043 | | | | | | |
| | | <p>Kabelverbindung Typ linear. Material:PC, farbe:Weiß.</p> | <table border="1"> <thead> <tr> <th>Finish</th> <th>Code</th> </tr> </thead> <tbody> <tr> <td>White</td> <td>81042</td> </tr> </tbody> </table> | Finish | Code | White | 81042 |
| Finish | Code | | | | | | |
| White | 81042 | | | | | | |
| | | <p>Kabelverbindung Typ linear. Material:PC, farbe:Weiß.</p> | <table border="1"> <thead> <tr> <th>Finish</th> <th>Code</th> </tr> </thead> <tbody> <tr> <td>White</td> <td>81051</td> </tr> </tbody> </table> | Finish | Code | White | 81051 |
| Finish | Code | | | | | | |
| White | 81051 | | | | | | |
| | | <p>Kabelverbindung Typ linear. Material:PC, farbe:Schwarz.</p> | <table border="1"> <thead> <tr> <th>Finish</th> <th>Code</th> </tr> </thead> <tbody> <tr> <td>Black</td> <td>81052</td> </tr> </tbody> </table> | Finish | Code | Black | 81052 |
| Finish | Code | | | | | | |
| Black | 81052 | | | | | | |
| | | <p>Stromversorgung Material:PC, farbe:Weiß.</p> | <table border="1"> <thead> <tr> <th>Code</th> </tr> </thead> <tbody> <tr> <td>81036</td> </tr> </tbody> </table> | Code | 81036 | | |
| Code | | | | | | | |
| 81036 | | | | | | | |
| | | <p>Kabelverbindung Typ flexible curve. Material:PC, farbe:Weiß.</p> | <table border="1"> <thead> <tr> <th>Finish</th> <th>Code</th> </tr> </thead> <tbody> <tr> <td>White</td> <td>81066</td> </tr> </tbody> </table> | Finish | Code | White | 81066 |
| Finish | Code | | | | | | |
| White | 81066 | | | | | | |
| | | <p>Endkappe Material:PC, farbe:Weiß.</p> | <table border="1"> <thead> <tr> <th>Code</th> </tr> </thead> <tbody> <tr> <td>80999</td> </tr> </tbody> </table> | Code | 80999 | | |
| Code | | | | | | | |
| 80999 | | | | | | | |

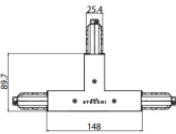


| | | <p>Schiene Länge: 1000mm; Typ Schiene: Standard. Material:Aluminium, farbe:Weiß, bearbeitungstyp :Lackierung.</p> | <table border="1"> <thead> <tr> <th>Finish</th> <th>Code</th> </tr> </thead> <tbody> <tr> <td>White</td> <td>80990</td> </tr> </tbody> </table> | Finish | Code | White | 80990 |
|--------|-------|---|---|--------|-------|-------|-------|
| Finish | Code | | | | | | |
| White | 80990 | | | | | | |
| | | <p>Kabelverbindung Typ linear. Material:PC, farbe:Weiß.</p> | <table border="1"> <thead> <tr> <th>Finish</th> <th>Code</th> </tr> </thead> <tbody> <tr> <td>White</td> <td>81039</td> </tr> </tbody> </table> | Finish | Code | White | 81039 |
| Finish | Code | | | | | | |
| White | 81039 | | | | | | |
| | | <p>Kabelverbindung Typ linear. Material:PC, farbe:Weiß.</p> | <table border="1"> <thead> <tr> <th>Finish</th> <th>Code</th> </tr> </thead> <tbody> <tr> <td>White</td> <td>81054</td> </tr> </tbody> </table> | Finish | Code | White | 81054 |
| Finish | Code | | | | | | |
| White | 81054 | | | | | | |
| | | <p>Kabelverbindung Typ linear. Material:PC, farbe:Weiß.</p> | <table border="1"> <thead> <tr> <th>Finish</th> <th>Code</th> </tr> </thead> <tbody> <tr> <td>White</td> <td>81045</td> </tr> </tbody> </table> | Finish | Code | White | 81045 |
| Finish | Code | | | | | | |
| White | 81045 | | | | | | |
| | | <p>Kabelverbindung Typ linear. Material:PC, farbe:Schwarz.</p> | <table border="1"> <thead> <tr> <th>Finish</th> <th>Code</th> </tr> </thead> <tbody> <tr> <td>Black</td> <td>81040</td> </tr> </tbody> </table> | Finish | Code | Black | 81040 |
| Finish | Code | | | | | | |
| Black | 81040 | | | | | | |
| | | <p>Kabelverbindung Typ linear. Material:PC, farbe:Weiß.</p> | <table border="1"> <thead> <tr> <th>Finish</th> <th>Code</th> </tr> </thead> <tbody> <tr> <td>White</td> <td>81048</td> </tr> </tbody> </table> | Finish | Code | White | 81048 |
| Finish | Code | | | | | | |
| White | 81048 | | | | | | |
| | | <p>Kabelverbindung Typ linear. Material:PC, farbe:Schwarz.</p> | <table border="1"> <thead> <tr> <th>Finish</th> <th>Code</th> </tr> </thead> <tbody> <tr> <td>Black</td> <td>81049</td> </tr> </tbody> </table> | Finish | Code | Black | 81049 |
| Finish | Code | | | | | | |
| Black | 81049 | | | | | | |
| | | <p>Endkappe Material:PC, farbe:Schwarz.</p> | <table border="1"> <thead> <tr> <th>Code</th> </tr> </thead> <tbody> <tr> <td>81000</td> </tr> </tbody> </table> | Code | 81000 | | |
| Code | | | | | | | |
| 81000 | | | | | | | |



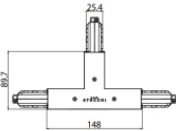
Kabelverbindung
Typ linear.
Material:PC, farbe:Schwarz.

| Finish | Code |
|--------|-------|
| Black | 81064 |



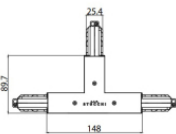
Kabelverbindung
Typ linear.
Material:PC, farbe:Weiß.

| Finish | Code |
|--------|-------|
| White | 81057 |



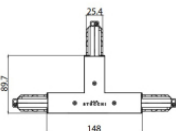
Kabelverbindung
Typ linear.
Material:PC, farbe:Schwarz.

| Finish | Code |
|--------|-------|
| Black | 81058 |



Kabelverbindung
Typ linear.
Material:PC, farbe:Weiß.

| Finish | Code |
|--------|-------|
| White | 81060 |



Kabelverbindung
Typ linear.
Material:PC, farbe:Schwarz.

| Finish | Code |
|--------|-------|
| Black | 81061 |



Endkappe
Material:PC, farbe:Weiß.

| Code |
|-------|
| 81002 |



Endkappe
Material:PC, farbe:Schwarz.

| Code |
|-------|
| 81003 |

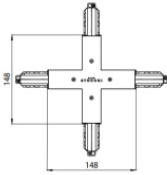
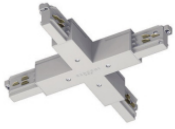


Deckenrosette
Material:Kunststoff, farbe:Weiß.

| Code |
|-------|
| 81012 |



| | | | |
|--|--|--|--|
| | | <p>Deckenrosette Material:Kunststoff, farbe:Schwarz.</p> | <p>Code 81014</p> |
| | | <p>Deckenrosette Material:Kunststoff, farbe:Weiß.</p> | <p>Code 81013</p> |
| | | <p>Kabelverbindung Typ linear. Material:PC, farbe:Schwarz.</p> | <p>Finish Black Code 81046</p> |
| | | <p>Hängeleuchten Material:Kunststoff, farbe:Weiß.</p> | <p>Code 81021</p> |
| | | <p>Hängeleuchten Material:Kunststoff, farbe:Schwarz.</p> | <p>Code 81022</p> |
| | | <p>Klammer L=35mm, H=14mm, D=24mm. Material:Aluminium, farbe:poliert.</p> | <p>Finish Anod. Al. Code 81086</p> |
| | | <p>Klammer L=35mm, H=14mm, D=24mm. Material:Aluminium, farbe:Weiß, bearbeitungstyp :Lackierung.</p> | <p>Finish White Code 81087</p> |
| | | <p>Klammer L=35mm, H=14mm, D=24mm. Material:Aluminium, farbe:Schwarz, bearbeitungstyp :Lackierung.</p> | <p>Finish Black Code 81088</p> |



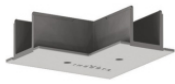
Kabelverbindung
Typ linear.
Material:PC, farbe:Weiß.

| Finish | Code |
|--------|-------|
| White | 81063 |



Deckenrosette
Material:Kunststoff, farbe:Schwarz.

| Code |
|-------|
| 81015 |



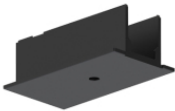
Drahtabdeckung
Material:PC, farbe:Weiß.

| Code |
|-------|
| 81075 |



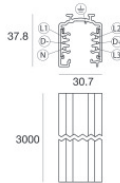
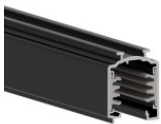
Drahtabdeckung
Material:PC, farbe:Schwarz.

| Code |
|-------|
| 81076 |



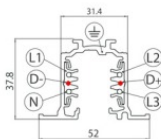
Drahtabdeckung
Material:PC, farbe:Schwarz.

| Code |
|-------|
| 81070 |



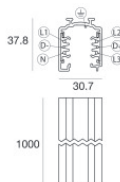
Schiene
Länge: 3000mm; Typ Schiene: Standard.
Material:Aluminium, farbe:Schwarz, bearbeitungstyp :Lackierung.

| Finish | Code |
|--------|-------|
| Black | 83341 |



Schiene
Länge: 3000mm; Typ Schiene: Standard.
Material:Aluminium, farbe:Weiß, bearbeitungstyp :Lackierung.

| Finish | Code |
|--------|-------|
| White | 80992 |



Schiene
Länge: 1000mm; Typ Schiene: Standard.
Material:Aluminium, farbe:Schwarz, bearbeitungstyp :Lackierung.

| Finish | Code |
|--------|-------|
| Black | 83339 |



| | | |
|--|---|---|
| | Werkzeug | Code 81005 |
| | Kabelverbindung Typ flexible curve. Material:PC, farbe:Schwarz. | Finish Black Code 81067 |
| | Drahtabdeckung Material:PC, farbe:Weiß. | Code 81069 |
| | Hängeleuchten Material:Kunststoff, farbe:Weiß. | Code 81007 |
| | Hängeleuchten Material:Kunststoff, farbe:Schwarz. | Code 81009 |
| | Hängeleuchten Material:Kunststoff, farbe:Schwarz. | Code 81008 |
| | Hängeleuchten Material:Kunststoff, farbe:Schwarz. | Code 81019 |
| | Drahtabdeckung Material:PC, farbe:Weiß. | Code 81081 |



| | | | |
|--|--|--|--|
| | | | Code 81093 |
| | | Klammer L=180mm, H=24mm, D=20mm. Material:Aluminium, farbe:Schwarz RAL 9005, bearbeitungstyp :Lackierung. | Finish Black Code 81026 |
| | | Stromversorgung Material:PC, farbe:Schwarz. | Code 81037 |
| | | Schiene Länge: 1000mm; Typ Schiene: Standard. Material:Aluminium, farbe:Schwarz, bearbeitungstyp :Lackierung. | Finish Black Code 80993 |
| | | Drahtabdeckung Material:PC, farbe:Schwarz. | Code 81082 |
| | | Klammer L=180mm, H=24mm, D=20mm. Material:Aluminium, farbe:Weiß RAL 9010, bearbeitungstyp :Lackierung. | Finish White Code 81025 |
| | | Drahtabdeckung Material:PC, farbe:Weiß. | Code 81078 |
| | | Hängeleuchten Material:Kunststoff, farbe:Weiß. | Code 81018 |



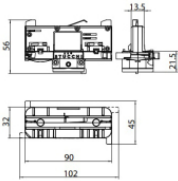
Pound_T | Projectors | Accessories
82227W30

| | | | |
|--|--|--|--|
| | <p>Drahtabdeckung Material:Schwarz, farbe:Schwarz.</p> | <p>Code 83250</p> | |
| | <p>Drahtabdeckung Material:Weiß.</p> | <p>Code 83249</p> | |
| | | <p>Kabelverbindung Typ linear. Material:PC, farbe:Schwarz.</p> | <p>Finish Black Code 81055</p> |
| | | <p>Drahtabdeckung Material:PC, farbe:Weiß.</p> | <p>Code 81072</p> |
| | | <p>Klammer L=180mm, H=24mm, D=26mm. Material:Aluminium, farbe:Eloxiertes Aluminium, bearbeitungstyp :Eloxierung.</p> | <p>Finish Code 81024</p> |
| | | <p>Endkappe Material:Weiß.</p> | <p>Code 81084</p> |
| | | <p>Drahtabdeckung Material:PC, farbe:Schwarz.</p> | <p>Code 81079</p> |
| | | <p>Drahtabdeckung Material:PC, farbe:Schwarz.</p> | <p>Code 81073</p> |

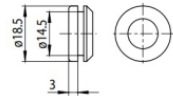


Hängeleuchten
Material:Kunststoff, farbe:Weiß.

Code
81006

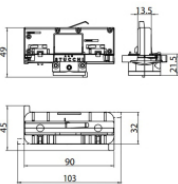


Code
81091

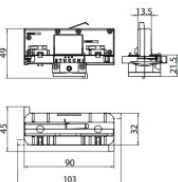


Endkappe
Material:Schwarz, farbe:Schwarz.

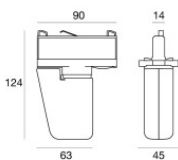
Code
81085



Code
81094



Code
81095



Elektronisches Zubehör - TWIL-DALI-Controller für Geräte mit DALI-Protokoll, die auf einer Dreiphasenschiene installiert sind.
installationsposition: decke L=90mm, H=124mm, D=45mm.
Material:Kunststoff ABS, farbe:Schwarz.

Code
C-E700008