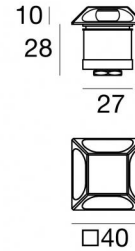




Uplights | 1 x powerLED 1.5 W DC 500 mA | CRI 80  
81751N18





Technische Daten	
Typ	Halbeinbau - -
Installationsposition	Boden
Installationsumgebung	Outdoor
Lichtquelle	LED
Circuit structure	powerLED
Optik	Radial Multidirectional emission
Light emission direction	external
Lampe Nennleistung	1.5 W DC
Lichtstrom (Lichtquelle)	227 lm
Eingangsspannungsbereich	500mA
Ähnlichste Farbtemperatur / Tone	4000 K
Farbwiedergabeindex	80 Ra
Gleichstrom/Gleichspannung	CC
Isolierklasse	3
IP	IP67
IK	IK10
Glühdrahtprüfung	850°
Direkte Montage auf normal entflammaren Oberflächen	Ja
CE	Ja
Einschließlich Driver	Nein
Leuchte dimmbar	DALI - 1-10V
Schwenkbarkeit	Nein
Drehbarkeit	Nein
Begehbarkeit	Ja
Überrollbarkeit	2000 Kg
Einschließlich Kabel	Ja
Kabellänge	1 m
Harzbeschichtung	Ja
Typ Lichtabstrahlung	Mehrflämmig
Nettogewicht	0.158 Kg
Schutz vor elektrostatischen Entladungen	Nein
Schutz vor Stoßspannungen	Nein
Technische Merkmale des Produkts	TVS


### Oberfläche Gehäuse

Material	Stahl AISI 316L
Farbe	Stahl
Bearbeitungstyp	Bürsten

### Elektronik

	89423 On/Off Driver 198~264V AC / 176~275V DC (1 - 3 art.)
--	---

	89422 On/Off Driver 198~264V AC / 176~275V DC (1 - 2 art.)
---	---

	C-E200007 On/Off Driver 198~264V AC / 180~275V DC (1 - 6 art.)
---	---



Uplights | 1 x powerLED 1.5 W DC 500 mA | CRI 80  
**81751N18**

Multiple emission uplights for outdoor application. The natural white LED light source with a radial multidirectional emission light distribution is composed of 1 powerLED LEDs with CCT of 4000 K and a CRI 80; the source luminous flux is 227 lm, with a 151.3 lm/W nominal luminous efficacy.

The device body is made of aisi 316l steel and features a steel finish, processed by means of brushing. The ingress protection degree is IP67; the total weight is of 0.158 kg. The power supply driver is not provided and is to be ordered separately.

The total absorbed power is 1.5 W. The power supply cable is included and features a 1 m length.

The device features protection class III and can be floor-mounted with an outer casing, code 84918(for concrete or masonry).

Compliant with the EN 60598-1 standard and its specific provisions.

### Energieeffizienzklasse

ieses Produkt enthält eine Lichtquelle der Energieeffizienzklasse D.

### Illuminotechnical Eigenschaften

Light Output Ratio (LOR)	40 %
Lichtstrom (Lichtquelle)	227 lm
Leuchten Lichtstrom	91 lm
Consumption	1,5 W
Leuchten Lichtausbeute	91 lm/W
Farbtemperatur	4000 K
Standard Deviation of Colour Matching	1.5 Step
Farbwiedergabeindex	80 Ra

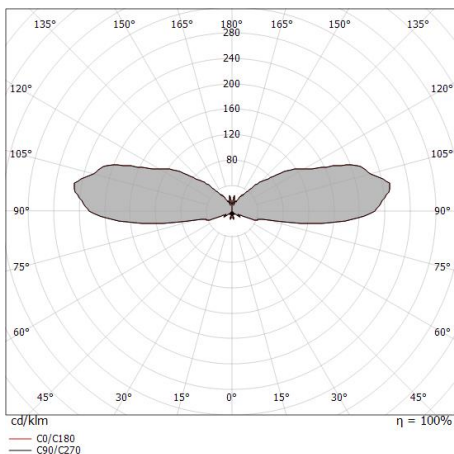
Standardumgebungstemperatur	-20 / +50°C
Typische Temperatur am Glas	40°C

### LED Life / Failure Ratio

L70 B10 C0 361980h (at Tj 60 Ta 25 )

### OPTICAL

Optik C0/C180	180°
Light distribution simmetry	Symmetrical





Alcor\_Q4 316 | Step Lights | Accessories  
**81751N18**



## Einbaugehäuse

installationsposition: boden; typ installation: mauerwerk L=87mm, H=60mm, D=60mm.

Material:Kunststoff ABS, farbe:Schwarz.

**Code**

84918