



Lineare Elemente | 220-240 V | 11 x powerLEDs 11.2 W DC - 12.5 W AC | CRI 80
81600W30

Single emission lines for outdoor application. The warm white LED light source is composed of 11 powered LEDs with CCT of 3000 K and a CRI 80; the source luminous flux is 1837 lm, with a 164.0 lm/W nominal luminous efficacy.

The device body is made of aluminium 6060 and features a anodised black finish, processed by means of 15 µm anodizing; the diffuser is made of extra clear glass - tempered with a silk-screening treatment. The ingress protection degree is IP67; the total weight is of 1.5 kg.

The total absorbed power is 12.5 W. The power supply cable is included and features a 0.2 m length.

The device features protection class I and can be wall lights or floor-mounted with an outer casing, code 98671 (for concrete or masonry).

Compliant with the EN 60598-1 standard and its specific provisions.

Energieeffizienzklasse

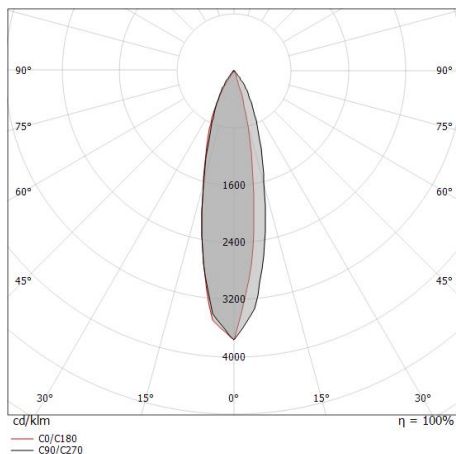
ieses Produkt enthält eine Lichtquelle der Energieeffizienzklasse D.

Illuminotechnical Eigenschaften

Light Output Ratio (LOR)	37 %
Lichtstrom (Lichtquelle)	1837 lm
Leuchten Lichtstrom	687 lm
Consumption	12.5 W
Leuchten Lichtausbeute	54 lm/W
Farbtemperatur	3000 K
Standard Deviation of Colour Matching	1.5 Step
Farbwiedergabeindex	80 Ra
Standardumgebungstemperatur	-20 / +50°C
Typische Temperatur am Glas	40°C

LED Life / Failure Ratio

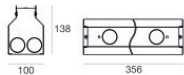
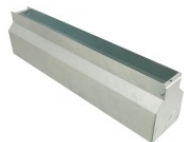
L70 B10 C0 361980h (at Tj 60 Ta 25)



Archiline_I Anti-glare



Archiline_I Anti-glare | Lines | Accessories
81600W30



Einbaugehäuse

installationsposition: wand, boden; typ installation: mauerwerk L=356mm, H=138.3mm,
D=100.2mm.

Material:Eisen, farbe:Zink, bearbeitungstyp :Verzinken.

Finish

Grey

Code

98671



Kabel und Stecker

Länge 5000 mm.

Code

99822



Kabel und Stecker

Länge 1000 mm.

Code

99823



Kabel und Stecker

Länge 5000 mm.

Code

99824



Kabel und Stecker

Länge 10000 mm.

Code

99825



Kabel und Stecker

Länge 1000 mm.

Code

99826