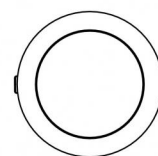
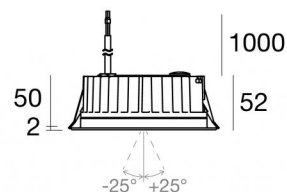




Downlights | 1 + 1 + 1 arrayLED 39 W DC 24 V

CRI 80

81246M30



Ø138

Technische Daten	
Installationsposition	Decke
Installationsumgebung	Outdoor
Lichtquelle	LED
Circuit structure	arrayLED
Optik	Medium Flood + Medium Flood + Medium Flood
Light emission direction	downward + downward + downward
Lampe Nennleistung	39 W DC
Lichtstrom (Lichtquelle)	5628 lm
Eingangsspannungsbereich	24 V
Ähnlichste Farbtemperatur / Tone	2700 K
Farbwiedergabeindex	80 Ra
Gleichstrom/Gleichspannung	CV
Isolierklasse	3
IP	IP67
IK	IK10
Glühdrahtprüfung	850°
Direkte Montage auf normal entflammaren Oberflächen	Ja
CE	Ja
Einschließlich Driver	Nein
C.V. - C.C. Converter	24 V Konverter enthalten
Leuchte dimmbar	DALI - 1-10V
Schwenkbarkeit	Nein
Drehbarkeit	Ja
Gesamtwinkel (vertikale Ebene)	50 °
Begehbarkeit	Nein
Überrollbarkeit	Nein
Einschließlich Kabel	Ja
Kabellänge	1 m
Harzbeschichtung	Ja
Typ Lichtabstrahlung	Einflammig
Nettogewicht	0.9 Kg
Schutz vor elektrostatischen Entladungen	Nein
Schutz vor Stoßspannungen	Nein
Technische Merkmale des Produkts	Acquastop

Oberfläche Gehäuse

Material	Stranggepresstes Aluminium EN AB - 46100
Farbe	Schwarz
Bearbeitungstyp	Offenporige Anodisierung + Pulverlackierung

Oberfläche Diffusor

Material	Extra-helles Glas - Gehärtet
Farbe	transparent
Bearbeitungstyp	Siebdruck

Oberfläche flansch

Material	Stahl AISI 316L
Farbe	Stahl
Bearbeitungstyp	Bürsten

Elektronik



89488
On/Off Driver 190-250V AC / 180-275V DC 15 W (1 art.)



89179
On/Off Driver 198-264V AC 24 W (1 art.)



89359
On/Off Driver 198-264V AC / 180-275V DC 48 W (1 art.)



99331
On/Off Driver 198-264V AC / 176-275V DC 150 W (1 art.)



99660
DALI - 1-10V Controller 24V DC 216 W (1 art.)



C-E500023
DALI - 1-10V - Push and Simply Dim Controller 8-53V DC 576 W (1 art.)

Cables Electrification

Cable connector No



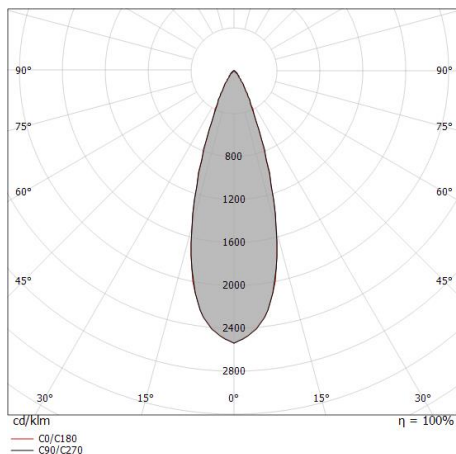
Downlights | 1 + 1 + 1 arrayLED 39 W DC 24 V | CRI 80 81246M30

Single emission recessed downlights for outdoor application. The super warm white LED light source with a medium flood light distribution is composed of 1 arrayed LEDs with CCT of 2700 K and a CRI 80; the source luminous flux is 1876 lm, with a 144.3 lm/W nominal luminous efficacy The super warm white LED light source with a medium flood light distribution is composed of 1 arrayed LEDs with CCT of 2700 K and a CRI 80; the source luminous flux is 1876 lm, with a 144.3 lm/W nominal luminous efficacy The super warm white LED light source with a medium flood light distribution is composed of 1 arrayed LEDs with CCT of 2700 K and a CRI 80; the source luminous flux is 1876 lm, with a 144.3 lm/W nominal luminous efficacy.

The device body is made of die-cast aluminium en ab - 46100 and features a black finish, processed by means of open pore anodizing + powder coating; the diffuser is made of extra clear glass - tempered with a silk-screening treatment. The ingress protection degree is IP67; the total weight is of 0.9 kg.

The total absorbed power is 39 W. The power supply cable is included and features a 1 m length.

The device features protection class III and can be ceiling-mounted, with a 127 mm diameter hole (in plasterboard) with an outer casing, code 99749(for concrete or masonry).



c provisions.

Distance [m]	Cone diameter [m]	illuminance [lx]
0.5	0.30 0.30	E(0°) 13373 E(C90) 16.8° 5916 E(C0) 16.9° 5875
1.0	0.60 0.61	E(0°) 3343 E(C90) 16.8° 1479 E(C0) 16.9° 1469
1.5	0.91 0.91	E(0°) 1486 E(C90) 16.8° 657 E(C0) 16.9° 653
2.0	1.21 1.22	E(0°) 836 E(C90) 16.8° 370 E(C0) 16.9° 367
2.5	1.51 1.52	E(0°) 535 E(C90) 16.8° 237 E(C0) 16.9° 235
3.0	1.81 1.82	E(0°) 371 E(C90) 16.8° 164 E(C0) 16.9° 163

Distance [m] Cone diameter [m] illuminance [lx]

— C0/C180 (Half-peak divergence: 33.8°)
— C90/C270 (Half-peak divergence: 33.6°)

Energieeffizienzklasse

Dieses Produkt enthält 3 Lichtquellen der Energieeffizienzklasse E.

Illuminotechnical Eigenschaften

Light Output Ratio (LOR)	23 %
Lichtstrom (Lichtquelle)	5628 lm
Leuchten Lichtstrom	1318 lm
Consumption	13 W
Leuchten Lichtausbeute	101 lm/W
Farbtemperatur	2700 K
Standard Deviation of Colour Matching	2 Step MacAdam
Farbwiedergabeindex	80 Ra
Standardumgebungstemperatur	-20 / +50°C
Typische Temperatur am Glas	40°C

LED Life / Failure Ratio

L70 B10 C0 296960h (at Tj 65 Ta 25)

UGR

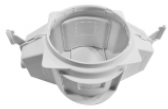
UGR axial	15.2
UGR transversal	14.7
X=4H Y=8H	S=0.25H
Reflection factor	70/50/20

OPTICAL

Optik C0/C180	34°
Light distribution simmetry	Symmetrical



Orma_CJ | Downlights | Accessories
81246M30



Einbaugehäuse - (zu ergänzen mit Universalgrill 99750)

installationsposition: decke; typ installation: mauerwerk L=290mm, H=125mm, D=190mm

Code

99749



Zubehör für Außengehäuse - Universalgitter für Außengehäuse 99749

Code

99750