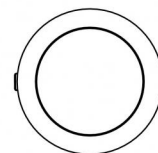
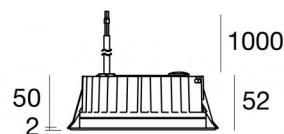


Downlights | 1 arrayLED 13 W DC 24 V | CRI 80
81238M60



Ø138

| Technische Daten | |
|---|--------------------------|
| Installationsposition | Decke |
| Installationsumgebung | Outdoor |
| Lichtquelle | LED |
| Circuit structure | arrayLED |
| Optik | Wide Flood |
| Light emission direction | downward |
| Lampe Nennleistung | 13 W DC |
| Lichtstrom (Lichtquelle) | 1876 lm |
| Eingangsspannungsbereich | 24 V |
| Ähnlichste Farbtemperatur / Tone | 2700 K |
| Farbwiedergabeindex | 80 Ra |
| Gleichstrom/Gleichspannung | CV |
| Isolierklasse | 3 |
| IP | IP67 |
| IK | IK10 |
| Glühdrahtprüfung | 850° |
| Direkte Montage auf normal entflammaren Oberflächen | Ja |
| CE | Ja |
| Einschließlich Driver | Nein |
| C.V. - C.C. Converter | 24 V Konverter enthalten |
| Leuchte dimmbar | DALI - 1-10V |
| Schwenkbarkeit | Nein |
| Drehbarkeit | Nein |
| Begehbarkeit | Nein |
| Überrollbarkeit | Nein |
| Einschließlich Kabel | Ja |
| Kabellänge | 1 m |
| Harzbeschichtung | Ja |
| Typ Lichtabstrahlung | Einflammig |
| Nettogewicht | 0.9 Kg |
| Schutz vor elektrostatischen Entladungen | Nein |
| Schutz vor Stoßspannungen | Nein |
| Technische Merkmale des Produkts | Acquastop |

Oberfläche Gehäuse

| | |
|-----------------|---|
| Material | Stranggepresstes Aluminium EN AB - 46100 |
| Farbe | Schwarz |
| Bearbeitungstyp | Offenporige Anodisierung + Pulverlackierung |

Oberfläche Diffusor

| | |
|-----------------|------------------------------|
| Material | Extra-helles Glas - Gehärtet |
| Farbe | transparent |
| Bearbeitungstyp | Siebdruck |

Oberfläche flansch

| | |
|-----------------|-----------------|
| Material | Stahl AISI 316L |
| Farbe | Stahl |
| Bearbeitungstyp | Bürsten |

Elektronik



89488
On/Off Driver 190~250V AC / 180~275V DC 15 W (1 art.)



89179
On/Off Driver 198~264V AC 24 W (1 art.)



89359
On/Off Driver 198~264V AC / 180~275V DC 48 W (1 - 3 art.)



99331
On/Off Driver 198~264V AC / 176~275V DC 150 W (1 art.)



99660
DALI - 1-10V Controller 24V DC 216 W (1 art.)



C-E500023
DALI - 1-10V - Push and Simply Dim Controller 8~53V DC 576 W (1 art.)

Cables Electrification

| | |
|-----------------|----|
| Cable connector | No |
|-----------------|----|

Downlights | 1 arrayLED 13 W DC 24 V | CRI 80 81238M60

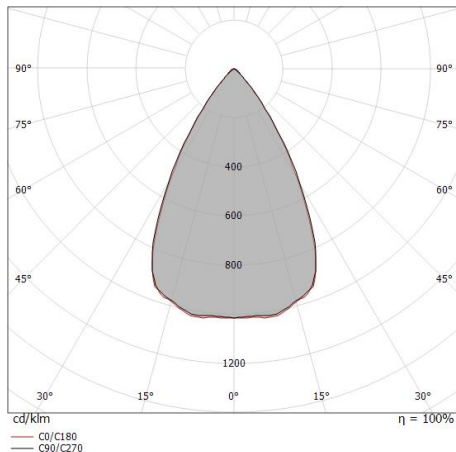
Single emission recessed downlights for outdoor application. The super warm white LED light source with a wide flood light distribution is composed of 1 arrayed LEDs with CCT of 2700 K and a CRI 80; the source luminous flux is 1876 lm, with a 144.3 lm/W nominal luminous efficacy.

The device body is made of die-cast aluminium en ab - 46100 and features a black finish, processed by means of open pore anodizing + powder coating; the diffuser is made of extra clear glass - tempered with a silk-screening treatment. The ingress protection degree is IP67; the total weight is of 0.9 kg.

The total absorbed power is 13 W. The power supply cable is included and features a 1 m length.

The device features protection class III and can be ceiling-mounted, with a 127 mm diameter hole (in plasterboard) with an outer casing, code 99749(for concrete or masonry).

Compliant with the EN 60598-1 standard and its specific provisions.



| Distance [m] | Cone diameter [m] | illuminance [lx] |
|--------------|-------------------|---|
| 0.5 | 0.59 0.58 | E(0°) 5629 E(C90) 30.5° 1809 E(C0) 29.9° 1857 |
| 1.0 | 1.18 1.15 | E(0°) 1407 E(C90) 30.5° 452 E(C0) 29.9° 464 |
| 1.5 | 1.77 1.73 | E(0°) 625 E(C90) 30.5° 201 E(C0) 29.9° 206 |
| 2.0 | 2.36 2.30 | E(0°) 352 E(C90) 30.5° 113 E(C0) 29.9° 116 |
| 2.5 | 2.95 2.88 | E(0°) 225 E(C90) 30.5° 72 E(C0) 29.9° 74 |
| 3.0 | 3.53 3.45 | E(0°) 156 E(C90) 30.5° 50 E(C0) 29.9° 52 |

— C0/C180 (Half-peak divergence: 59.8°)
— C90/C270 (Half-peak divergence: 61.0°)

Energieeffizienzklasse

ieses Produkt enthält eine Lichtquelle der Energieeffizienzklasse E.

Illuminotechnical Eigenschaften

| | |
|---------------------------------------|----------------|
| Light Output Ratio (LOR) | 73 % |
| Lichtstrom (Lichtquelle) | 1876 lm |
| Leuchten Lichtstrom | 1385 lm |
| Consumption | 13 W |
| Leuchten Lichtausbeute | 106 lm/W |
| Farbtemperatur | 2700 K |
| Standard Deviation of Colour Matching | 2 Step MacAdam |
| Farbwiedergabeindex | 80 Ra |

| | |
|-----------------------------|-------------|
| Standardumgebungstemperatur | -20 / +50°C |
| Typische Temperatur am Glas | 40°C |

LED Life / Failure Ratio

L70 B10 C0 296960h (at Tj 65 Ta 25)

UGR

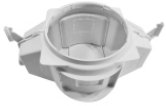
| | |
|-------------------|----------|
| UGR axial | 18.8 |
| UGR transversal | 18.6 |
| X=4H Y=8H | S=0.25H |
| Reflection factor | 70/50/20 |

OPTICAL

| | |
|-----------------------------|-------------|
| Optik C0/C180 | 60° |
| Light distribution simmetry | Symmetrical |



Orma_C | Downlights | Accessories
81238M60



Einbaugehäuse - (zu ergänzen mit Universalgrill 99750)
installationsposition: decke; typ installation: mauerwerk L=290mm, H=125mm, D=190mm

Code
99749



Zubehör für Außengehäuse - Universalgitter für Außengehäuse 99749

Code
99750