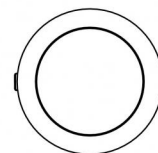
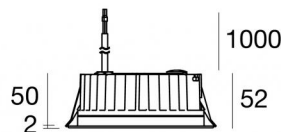


Downlights | 1 arrayLED 13 W DC 24 V | CRI 80  
81238M30



Ø138

| Technische Daten                                    |                          |
|---|--------------------------|
| Installationsposition                               | Decke                    |
| Installationsumgebung                               | Outdoor                  |
| Lichtquelle   | LED                      |
| Circuit structure                                   | arrayLED                 |
| Optik   | Medium Flood             |
| Light emission direction                            | downward                 |
| Lampe Nennleistung                                  | 13 W DC                  |
| Lichtstrom (Lichtquelle)                            | 1876 lm                  |
| Eingangsspannungsbereich                            | 24 V                     |
| Ähnlichste Farbtemperatur / Tone                    | 2700 K                   |
| Farbwiedergabeindex                                 | 80 Ra                    |
| Gleichstrom/Gleichspannung                          | CV                       |
| Isolierklasse                                       | 3                        |
| IP  | IP67                     |
| IK  | IK10                     |
| Glühdrahtprüfung                                    | 850°                     |
| Direkte Montage auf normal entflammaren Oberflächen | Ja                       |
| CE  | Ja                       |
| Einschließlich Driver                               | Nein                     |
| C.V. - C.C. Converter                               | 24 V Konverter enthalten |
| Leuchte dimmbar                                     | DALI - 1-10V             |
| Schwenkbarkeit                                      | Nein                     |
| Drehbarkeit   | Nein                     |
| Begehbarkeit  | Nein                     |
| Überrollbarkeit                                     | Nein                     |
| Einschließlich Kabel                                | Ja                       |
| Kabellänge  | 1 m                      |
| Harzbeschichtung                                    | Ja                       |
| Typ Lichtabstrahlung                                | Einflammig               |
| Nettogewicht  | 0.9 Kg                   |
| Schutz vor elektrostatischen Entladungen            | Nein                     |
| Schutz vor Stoßspannungen                           | Nein                     |
| Technische Merkmale des Produkts                    | Acquastop                |

#### Oberfläche Gehäuse

|                 |   |
|-----------------|---|
| Material        | Stranggepresstes Aluminium EN AB - 46100    |
| Farbe           | Schwarz                                     |
| Bearbeitungstyp | Offenporige Anodisierung + Pulverlackierung |

#### Oberfläche Diffusor

|                 |                              |
|-----------------|------------------------------|
| Material        | Extra-helles Glas - Gehärtet |
| Farbe           | transparent                  |
| Bearbeitungstyp | Siebdruck                    |

#### Oberfläche flansch

|                 |                 |
|-----------------|-----------------|
| Material        | Stahl AISI 316L |
| Farbe           | Stahl           |
| Bearbeitungstyp | Bürsten         |

#### Elektronik



89488  
On/Off Driver 190~250V AC / 180~275V DC 15 W (1 art.)



89179  
On/Off Driver 198~264V AC 24 W (1 art.)



89359  
On/Off Driver 198~264V AC / 180~275V DC 48 W (1 - 3 art.)



99331  
On/Off Driver 198~264V AC / 176~275V DC 150 W (1 art.)



99660  
DALI - 1-10V Controller 24V DC 216 W (1 art.)



C-E500023  
DALI - 1-10V - Push and Simply Dim Controller 8~53V DC 576 W (1 art.)

#### Cables Electrification

Cable connector No

## Downlights | 1 arrayLED 13 W DC 24 V | CRI 80 81238M30

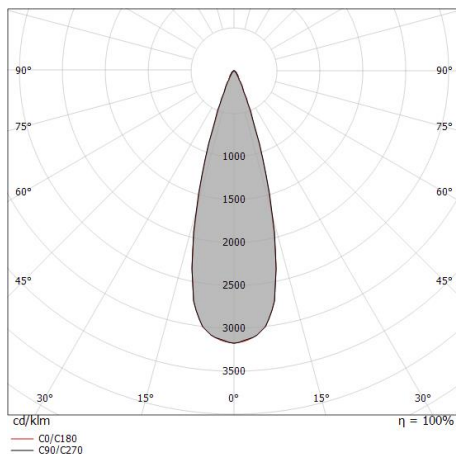
Single emission recessed downlights for outdoor application. The super warm white LED light source with a medium flood light distribution is composed of 1 arrayed LEDs with CCT of 2700 K and a CRI 80; the source luminous flux is 1876 lm, with a 144.3 lm/W nominal luminous efficacy.

The device body is made of die-cast aluminium en ab - 46100 and features a black finish, processed by means of open pore anodizing + powder coating; the diffuser is made of extra clear glass - tempered with a silk-screening treatment. The ingress protection degree is IP67; the total weight is of 0.9 kg.

The total absorbed power is 13 W. The power supply cable is included and features a 1 m length.

The device features protection class III and can be ceiling-mounted, with a 127 mm diameter hole (in plasterboard) with an outer casing, code 99749(for concrete or masonry).

Compliant with the EN 60598-1 standard and its specific provisions.



| Distance [m] | Cone diameter [m] | illuminance [lx]                                     |
|--------------|-------------------|--|
| 0.5          | 0.28<br>0.27      | E(0°) 17531<br>E(C90) 15.5° 7899<br>E(C0) 15.3° 7956 |
| 1.0          | 0.55<br>0.55      | E(0°) 4283<br>E(C90) 15.5° 1975<br>E(C0) 15.3° 1989  |
| 1.5          | 0.83<br>0.82      | E(0°) 1948<br>E(C90) 15.5° 878<br>E(C0) 15.3° 884    |
| 2.0          | 1.11<br>1.08      | E(0°) 1096<br>E(C90) 15.5° 494<br>E(C0) 15.3° 497    |
| 2.5          | 1.39<br>1.37      | E(0°) 701<br>E(C90) 15.5° 316<br>E(C0) 15.3° 318     |
| 3.0          | 1.66<br>1.64      | E(0°) 487<br>E(C90) 15.5° 219<br>E(C0) 15.3° 221     |

Distance [m] Cone diameter [m] illuminance [lx]

— C0/C180 (Half-peak divergence: 30.6°)  
— C90/C270 (Half-peak divergence: 31.0°)

### Energieeffizienzklasse

ieses Produkt enthält eine Lichtquelle der Energieeffizienzklasse E.

### Illuminotechnical Eigenschaften

|                                       |                |
|---------------------------------------|----------------|
| Light Output Ratio (LOR)              | 73 %           |
| Lichtstrom (Lichtquelle)              | 1876 lm        |
| Leuchten Lichtstrom                   | 1380 lm        |
| Consumption                           | 13 W           |
| Leuchten Lichtausbeute                | 106 lm/W       |
| Farbtemperatur                        | 2700 K         |
| Standard Deviation of Colour Matching | 2 Step MacAdam |
| Farbwiedergabeindex                   | 80 Ra          |
| Standardumgebungstemperatur           | -20 / +50°C    |
| Typische Temperatur am Glas           | 40°C           |

### LED Life / Failure Ratio

L70 B10 C0 296960h (at Tj 65 Ta 25 )

### UGR

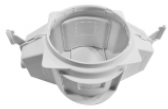
|                   |          |
|-------------------|----------|
| UGR axial         | 15       |
| UGR transversal   | 15.1     |
| X=4H   Y=8H       | S=0.25H  |
| Reflection factor | 70/50/20 |

### OPTICAL

|                             |             |
|-----------------------------|-------------|
| Optik C0/C180               | 31°         |
| Light distribution simmetry | Symmetrical |



Orma\_C | Downlights | Accessories  
**81238M30**



Einbaugehäuse - (zu ergänzen mit Universalgrill 99750)

installationsposition: decke; typ installation: mauerwerk L=290mm, H=125mm, D=190mm

**Code**

99749



Zubehör für Außengehäuse - Universalgitter für Außengehäuse 99749

**Code**

99750