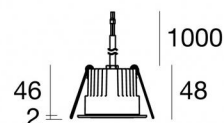




Downlights | 1 + 1 x powerLED 10 W DC 24 V

CRI 80

81227N30



55



Ø64

Technische Daten

Installationsposition	Decke
Installationsumgebung	Outdoor
Lichtquelle	LED
Circuit structure	powerLED
Optik	Flood + Flood
Light emission direction	downward + downward
Lampe Nennleistung	10 W DC
Lichtstrom (Lichtquelle)	1058 lm
Eingangsspannungsbereich	24 V
Ähnlichste Farbtemperatur / Tone	4000 K
Farbwiedergabeindex	80 Ra
Gleichstrom/Gleichspannung	CV
Isolierklasse	3
IP	IP67
IK	IK10
Glühdrahtprüfung	850°
Direkte Montage auf normal entflammaren Oberflächen	Ja
CE	Ja
Einschließlich Driver	Nein
C.V. - C.C. Converter	24 V Konverter enthalten
Leuchte dimmbar	DALI - 1-10V
Schwenkbarkeit	Nein
Drehbarkeit	Nein
Begehbarkeit	Nein
Überrollbarkeit	Nein
Einschließlich Kabel	Ja
Kabellänge	1 m
Harzbeschichtung	Ja
Typ Lichtabstrahlung	Einflammig
Nettogewicht	0.2 Kg
Schutz vor elektrostatischen Entladungen	Nein
Schutz vor Stoßspannungen	Nein
Optiktechnologie	Honey comb
Technische Merkmale des Produkts	Acquastop - TVS

Oberfläche Gehäuse

Material	Stranggepresstes Aluminium EN AB - 46100
Farbe	Schwarz
Bearbeitungstyp	Offenporige Anodisierung + Pulverlackierung

Oberfläche Diffusor

Material	Extra-helles Glas - Gehärtet
Farbe	transparent

Oberfläche flansch

Material	Stahl AISI 316L
Farbe	Stahl
Bearbeitungstyp	Bürsten

Elektronik



89488
On/Off Driver 190~250V AC / 180~275V DC 15 W (1 art.)



89179
On/Off Driver 198~264V AC 24 W (1 - 2 art.)



89359
On/Off Driver 198~264V AC / 180~275V DC 48 W (1 - 4 art.)



99331
On/Off Driver 198~264V AC / 176~275V DC 150 W (1 - 15 art.)



99660
DALI - 1-10V Controller 24V DC 216 W (- art.)



C-E500023
DALI - 1-10V - Push and Simply Dim Controller 8~53V DC 576 W (- art.)

Cables Electrification with converter

Cable connector	No
-----------------	----



Downlights | 1 + 1 x powerLED 10 W DC 24 V | CRI 80 81227N30

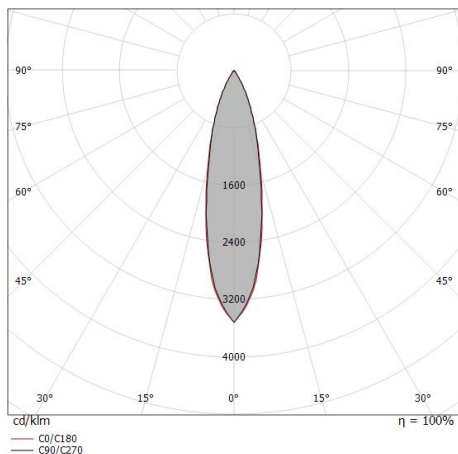
Single emission recessed downlights for outdoor application. The natural white LED light source with a flood light distribution is composed of 1 powered LEDs with CCT of 4000 K and a CRI 80; the source luminous flux is 529 lm, with a 105.8 lm/W nominal luminous efficacy. The natural white LED light source with a flood light distribution is composed of 1 powered LEDs with CCT of 4000 K and a CRI 80; the source luminous flux is 529 lm, with a 105.8 lm/W nominal luminous efficacy.

The device body is made of die-cast aluminium en ab - 46100 and features a black finish, processed by means of open pore anodizing + powder coating; the diffuser is made of extra clear glass - tempered. The ingress protection degree is IP67; the total weight is of 0.2 kg.

The total absorbed power is 10 W. The power supply cable is included and features a 1 m length.

The device features protection class III and can be ceiling-mounted, with a 55 mm diameter hole (in plasterboard) with an outer casing, code 99749(for concrete or masonry).

Compliant with the EN 60598-1 standard and its specific provisions.



Distance [m]	Cone diameter [m]	illuminance [lx]
0.5	0.22 0.23	E(0°) 2834 E(C90) 1321 E(C0) 1325
1.0	0.44 0.45	E(0°) 709 E(C90) 330 E(C0) 331
1.5	0.67 0.68	E(0°) 315 E(C90) 147 E(C0) 147
2.0	0.89 0.90	E(0°) 177 E(C90) 83 E(C0) 83
2.5	1.11 1.13	E(0°) 113 E(C90) 53 E(C0) 53
3.0	1.33 1.35	E(0°) 79 E(C90) 37 E(C0) 37

Distance [m] Cone diameter [m] illuminance [lx]

— C0/C180 (Half-peak divergence: 25.4°)
— C90/C270 (Half-peak divergence: 25.0°)

Energieeffizienzklasse

Dieses Produkt enthält 2 Lichtquellen der Energieeffizienzklasse E.

Illuminotechnical Eigenschaften

Light Output Ratio (LOR)	19 %
Lichtstrom (Lichtquelle)	1058 lm
Leuchten Lichtstrom	202 lm
Consumption	5 W
Leuchten Lichtausbeute	40 lm/W
Farbtemperatur	4000 K
Standard Deviation of Colour Matching	3 Step MacAdam
Farbwiedergabeindex	80 Ra
Standardumgebungstemperatur	-20 / +50°C
Typische Temperatur am Glas	40°C

LED Life / Failure Ratio

L70 B10 C0 247450h (at Tj 60 Ta 25)

UGR

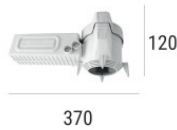
UGR axial	14.2
UGR transversal	14
X=4H Y=8H	S=0.25H
Reflection factor	70/50/20

OPTICAL

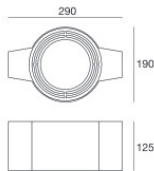
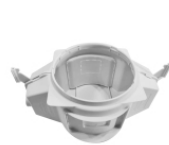
Optik C0/C180	25°
Light distribution simmetry	Symmetrical

**Einbaugehäuse**

installationsposition: decke; typ installation: mauerwerk L=200mm, H=113mm, D=137mm.
Material:Polypropylen, farbe:Weiß.

Code
89373**Einbaugehäuse**

installationsposition: decke; typ installation: mauerwerk L=370mm, H=120mm, D=200mm.
Material:Polypropylen, farbe:Weiß.

Code
89374**Einbaugehäuse - (zu ergänzen mit Universalgrill 99750)**

installationsposition: decke; typ installation: mauerwerk L=290mm, H=125mm, D=190mm

Code
99749**Zubehör für Außengehäuse - Universalgitter für Außengehäuse 99749****Code**
99750