

Downlights | 1 x powerLED 4 W DC 350 mA | CRI 80  
81224N15



55

| Technische Daten                                    |                 |
|---|-----------------|
| Installationsposition                               | Decke           |
| Installationsumgebung                               | Outdoor         |
| Lichtquelle   | LED             |
| Circuit structure                                   | powerLED        |
| Optik   | Spot            |
| Light emission direction                            | downward        |
| Lampe Nennleistung                                  | 4 W DC          |
| Lichtstrom (Lichtquelle)                            | 529 lm          |
| Eingangsspannungsbereich                            | 350mA           |
| Ähnlichste Farbtemperatur / Tone                    | 4000 K          |
| Farbwiedergabeindex                                 | 80 Ra           |
| Gleichstrom/Gleichspannung                          | CC              |
| Isolierklasse                                       | 3               |
| IP  | IP67            |
| IK  | IK10            |
| Glühdrahtprüfung                                    | 850°            |
| Direkte Montage auf normal entflammaren Oberflächen | Ja              |
| CE  | Ja              |
| Einschließlich Driver                               | Nein            |
| Leuchte dimmbar                                     | DALI - 1-10V    |
| Schwenkbarkeit                                      | Nein            |
| Drehbarkeit   | Nein            |
| Begehbarkeit  | Nein            |
| Überrollbarkeit                                     | Nein            |
| Einschließlich Kabel                                | Ja              |
| Kabellänge  | 1 m             |
| Harzbeschichtung                                    | Ja              |
| Typ Lichtabstrahlung                                | Einflammig      |
| Nettogewicht  | 0.2 Kg          |
| Schutz vor elektrostatischen Entladungen            | Nein            |
| Schutz vor Stoßspannungen                           | Nein            |
| Optiktechnologie                                    | Honey comb      |
| Technische Merkmale des Produkts                    | Acquastop - TVS |

#### Oberfläche Gehäuse

|                 |   |
|-----------------|---|
| Material        | Stranggepresstes Aluminium EN AB - 46100    |
| Farbe           | Schwarz                                     |
| Bearbeitungstyp | Offenporige Anodisierung + Pulverlackierung |

#### Oberfläche Diffusor

|          |                              |
|----------|------------------------------|
| Material | Extra-helles Glas - Gehärtet |
| Farbe    | transparent                  |

#### Oberfläche flansch

|                 |                 |
|-----------------|-----------------|
| Material        | Stahl AISI 316L |
| Farbe           | Stahl           |
| Bearbeitungstyp | Bürsten         |

#### Elektronik



89421  
On/Off Driver 198~264V AC / 176~275V DC (1 art.)



C-E200004  
Push and Simply Dim - DALI-2 Controller (2 - 3 art.)



C-E200006  
On/Off Driver 198~264V AC / 180~275V DC (2 - 3 art.)

#### Cables Electrification

|                 |    |
|-----------------|----|
| Cable connector | No |
|-----------------|----|

## Downlights | 1 x powerLED 4 W DC 350 mA | CRI 80 81224N15

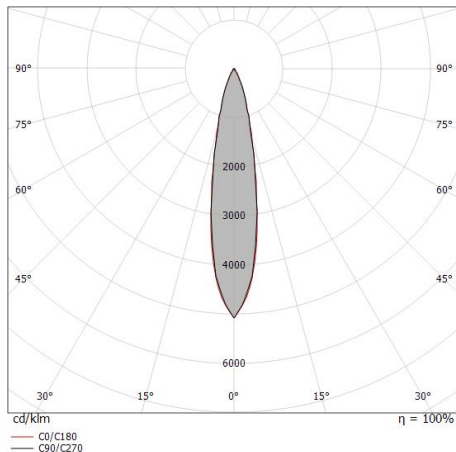
Single emission recessed downlights for outdoor application. The natural white LED light source with a spot light distribution is composed of 1 powered LEDs with CCT of 4000 K and a CRI 80; the source luminous flux is 529 lm, with a 132.3 lm/W nominal luminous efficacy.

The device body is made of die-cast aluminium en ab - 46100 and features a black finish, processed by means of open pore anodizing + powder coating; the diffuser is made of extra clear glass - tempered. The ingress protection degree is IP67; the total weight is of 0.2 kg. The power supply driver is not provided and is to be ordered separately.

The total absorbed power is 4 W. The power supply cable is included and features a 1 m length.

The device features protection class III and can be ceiling-mounted, with a 55 mm diameter hole (in plasterboard) with an outer casing, code 99749(for concrete or masonry).

Compliant with the EN 60598-1 standard and its specific provisions.



| Distance [m] | Cone diameter [m] | Intensity [lx] |
|--------------|-------------------|----------------|
| 0.5          | 0.18              | 4922           |
| 1.0          | 0.36              | 1230           |
| 1.5          | 0.54              | 547            |
| 2.0          | 0.72              | 308            |
| 2.5          | 0.90              | 197            |
| 3.0          | 1.08              | 137            |

Intensity values at 10.2° and 10.3° are also provided in the diagram.

### Energieeffizienzklasse

ieses Produkt enthält eine Lichtquelle der Energieeffizienzklasse E.

### Illuminotechnical Eigenschaften

|                                       |                |
|---------------------------------------|----------------|
| Light Output Ratio (LOR)              | 45 %           |
| Lichtstrom (Lichtquelle)              | 529 lm         |
| Leuchten Lichtstrom                   | 242 lm         |
| Consumption                           | 4 W            |
| Leuchten Lichtausbeute                | 60 lm/W        |
| Farbtemperatur                        | 4000 K         |
| Standard Deviation of Colour Matching | 3 Step MacAdam |
| Farbwiedergabeindex                   | 80 Ra          |
| Standardumgebungstemperatur           | -20 / +50°C    |
| Typische Temperatur am Glas           | 40°C           |

### LED Life / Failure Ratio

L70 B10 C0 247450h (at Tj 60 Ta 25 )

### UGR

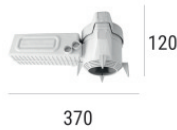
|                   |          |
|-------------------|----------|
| UGR axial         | 12.8     |
| UGR transversal   | 13.3     |
| X=4H   Y=8H       | S=0.25H  |
| Reflection factor | 70/50/20 |

### OPTICAL

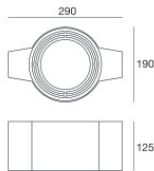
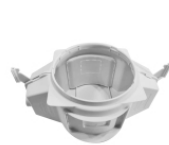
|                             |             |
|-----------------------------|-------------|
| Optik C0/C180               | 20°         |
| Light distribution simmetry | Symmetrical |

**Einbaugehäuse**

installationsposition: decke; typ installation: mauerwerk L=200mm, H=113mm, D=137mm.  
Material:Polypropylen, farbe:Weiß.

**Code**89373**Einbaugehäuse**

installationsposition: decke; typ installation: mauerwerk L=370mm, H=120mm, D=200mm.  
Material:Polypropylen, farbe:Weiß.

**Code**89374**Einbaugehäuse - (zu ergänzen mit Universalgrill 99750)**

installationsposition: decke; typ installation: mauerwerk L=290mm, H=125mm, D=190mm

**Code**99749**Zubehör für Außengehäuse - Universalgitter für Außengehäuse 99749****Code**99750